

PLATE 24

PLATE 22

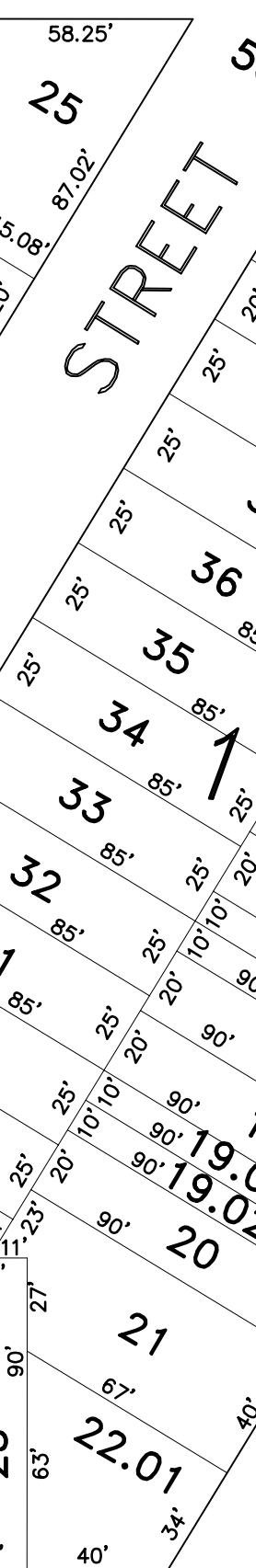
PLATE 27

MONMOUTH

60' BROWN

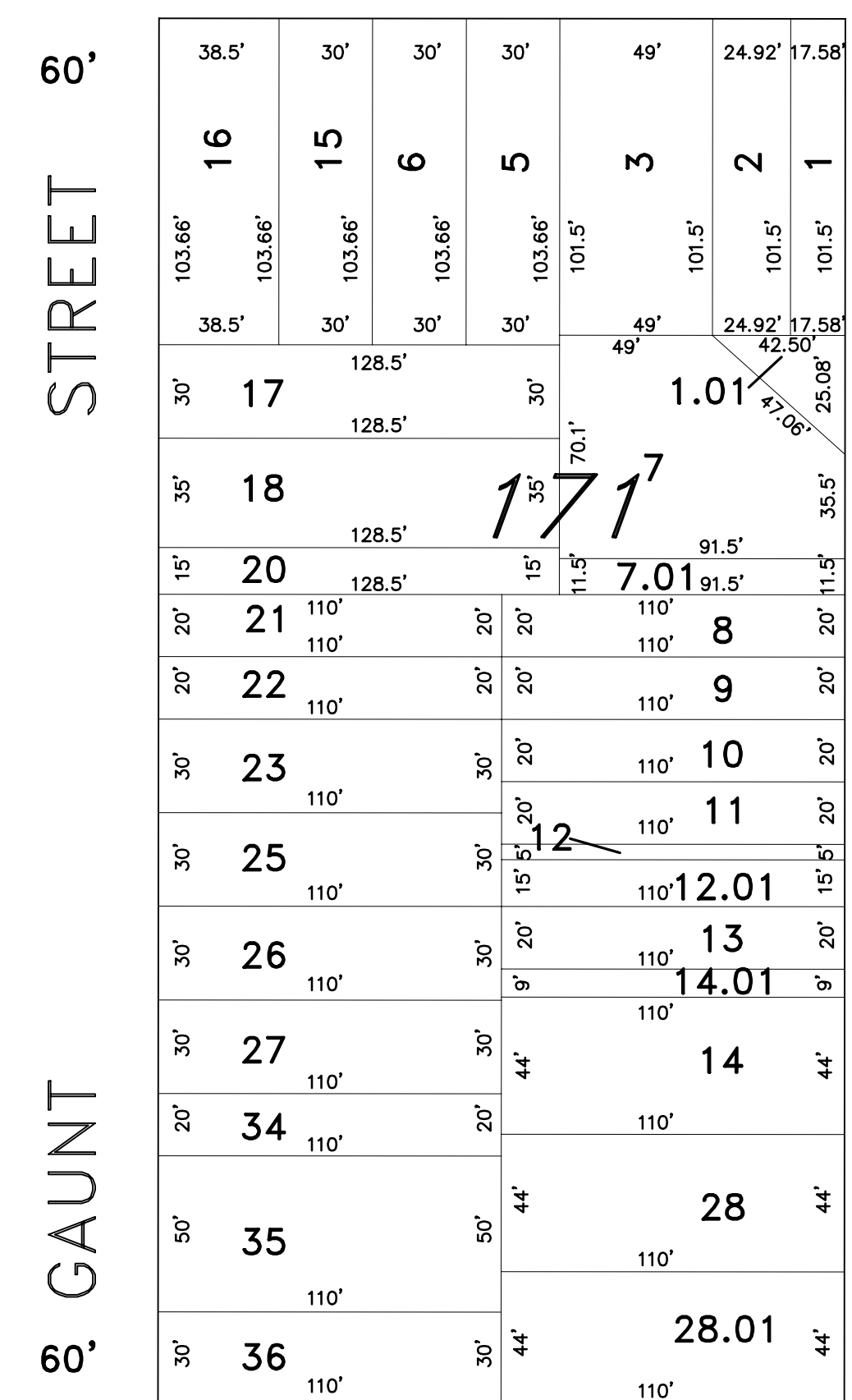


BERGEN



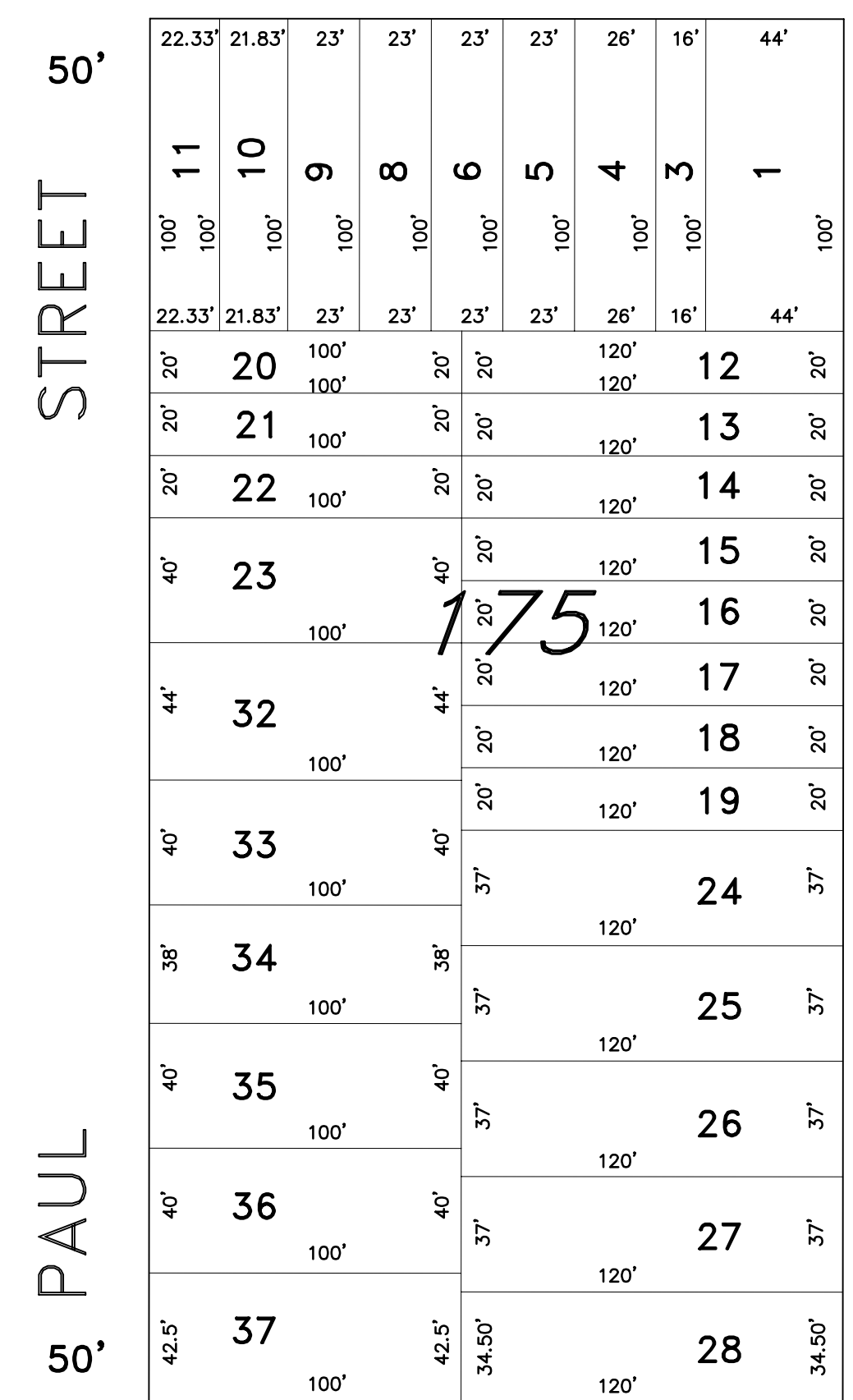
HUDSON

STREET



60' GAUNT STREET

60' STREET



50' PAUL AVENUE

50' CHAMBERS

PLATE 21

57.6' JOHNSON

BOULEVARD

57.6'

CONRAIL

(FORMERLY P.R.S.L.-W.J.& S.RR) - GLOUCESTER & MT.EPHRAIM BR.

NICHOLSON ROAD

PLATE 51

PLATE 52

"THIS TAX MAP PLATE HAS BEEN DIGITALLY DRAWN USING COMPUTER-AIDED DRAFTING/DESIGN (CADD) AND COORDINATE GEOMETRY (COGO). IT IS BASED ON THE ORIGINAL DIGITALLY DRAWN TAX MAP PLATE BEARING THE OFFICIAL NEW JERSEY DIVISION OF TAXATION APPROVAL STAMP WITH APPROVAL DATE 3-24-1994, SERIAL NUMBER 759 AND SIGNATURE OF SIGNER IVAN HAFKOWYCZ P.E., L.S. THIS TAX MAP PLATE HAS BEEN DIGITALLY UPDATED TO REFLECT CONDITIONS AS OF 11-18-2004. THE ORIGINAL DRAWN TAX MAP PLATE WITH THE OFFICIAL APPROVAL STAMP IS ON FILE WITH REMINGTON AND VERNICK ENGINEERS."

TAX MAP CITY OF GLOUCESTER CAMDEN COUNTY NEW JERSEY SCALE: 1" = 50' DATE: 5-15-1992 CRAIG F. REMINGTON LAND SURVEYOR LIC. NO. 23924 REMINGTON & VERNICK ENGINEERS 232 KING'S HIGHWAY EAST HADDONFIELD, N.J. 08033 (856) 795-9595, FAX (856) 795-1882 WEB SITE ADDRESS WWW.RVCE.COM