

PLATE 27

PLATE 38

PLATE 28

PLATE 41

PLATE 32

PLATE 33

PLATE 36

EAST BROWN STREET

RIDGEWAY STREET

SPARKS

DALY STREET

BARNABY

HICKMAN

AMON

AVENUE

AVENUE

AVENUE

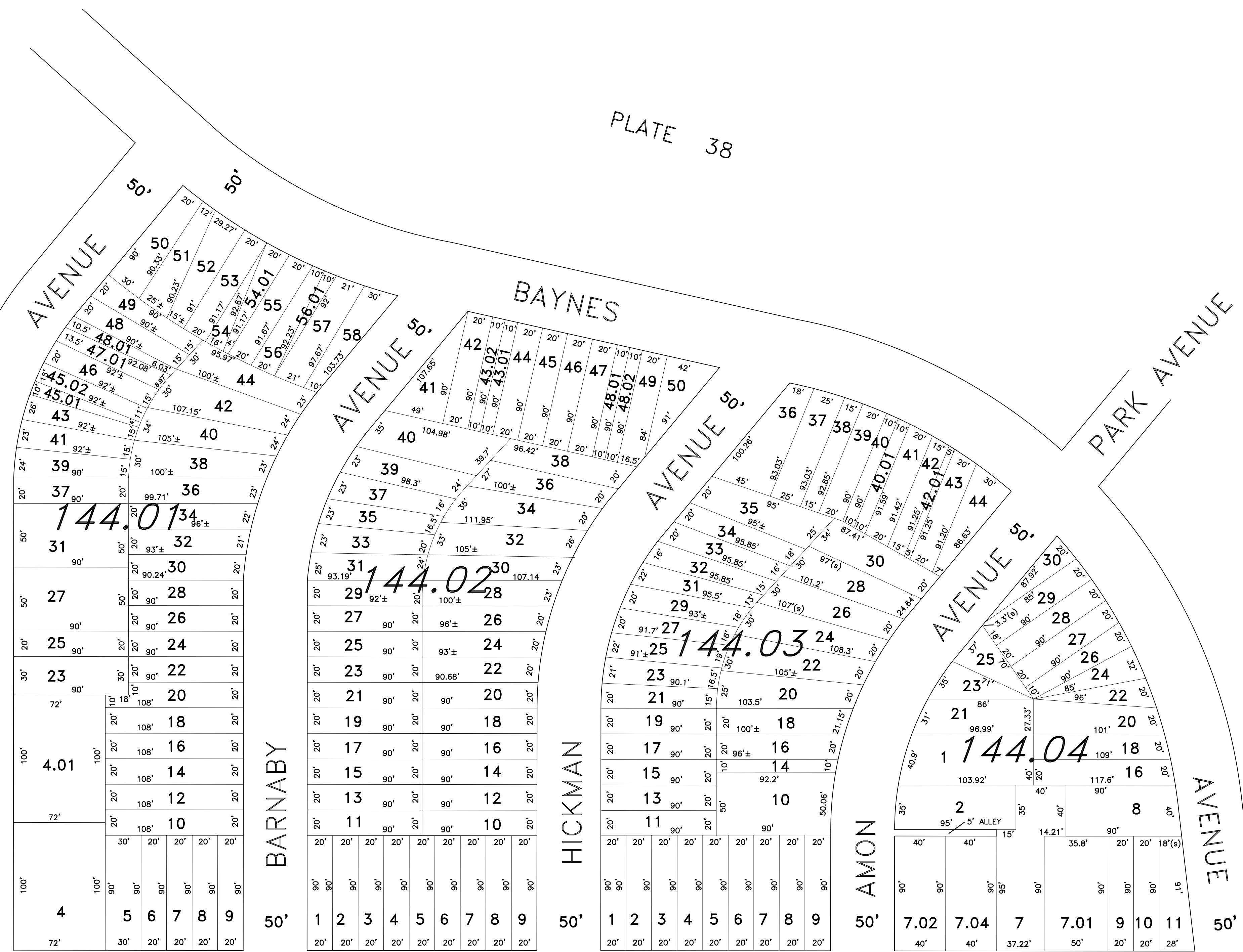
AVENUE

PARK AVENUE

AVENUE

MARKET STREET

STREET



"THIS TAX MAP PLATE HAS BEEN DIGITALLY DRAWN USING COMPUTER-AIDED DRAFTING/DESIGN (CADD) AND COORDINATE GEOMETRY (COGO). IT IS BASED ON THE ORIGINAL DIGITALLY DRAWN TAX MAP PLATE BEARING THE OFFICIAL NEW JERSEY DIVISION OF TAXATION APPROVAL STAMP WITH APPROVAL DATE 3-24-1994, SERIAL NUMBER 759 AND SIGNATURE OF SIGNER IVAN HAFKOWYCZ P.E., L.S. THIS TAX MAP PLATE HAS BEEN DIGITALLY UPDATED TO REFLECT CONDITIONS AS OF 11-18-2004. THE ORIGINAL DRAWN TAX MAP PLATE WITH THE OFFICIAL APPROVAL STAMP IS ON FILE WITH REMINGTON AND VERNICK ENGINEERS."

**TAX MAP**  
**CITY OF GLOUCESTER**  
 CAMDEN COUNTY NEW JERSEY  
 SCALE: 1" = 50' DATE: 5-15-1992  
**CRAIG F. REMINGTON LAND SURVEYOR LIC. NO. 23924**  
 24 GA 28003800  
**REMINGTON & VERNICK ENGINEERS**  
 232 KING'S HIGHWAY EAST HADDONFIELD, N.J. 08033  
 (856) 795-9595, FAX (856) 795-1882  
 WEB SITE ADDRESS: WWW.RVCE.COM