

CLASS 1 CONRAIL (FORMERLY GLOUCESTER BRANCH & ATLANTIC CITY RAILROAD)

KLEMM AVENUE

PLATE 39

PLATE 27

BAYNES

HIGHLAND

SPARKS AVE.

BARNABY AVE.

PLATE 37

HICKMAN AVE.

AMON AVE.

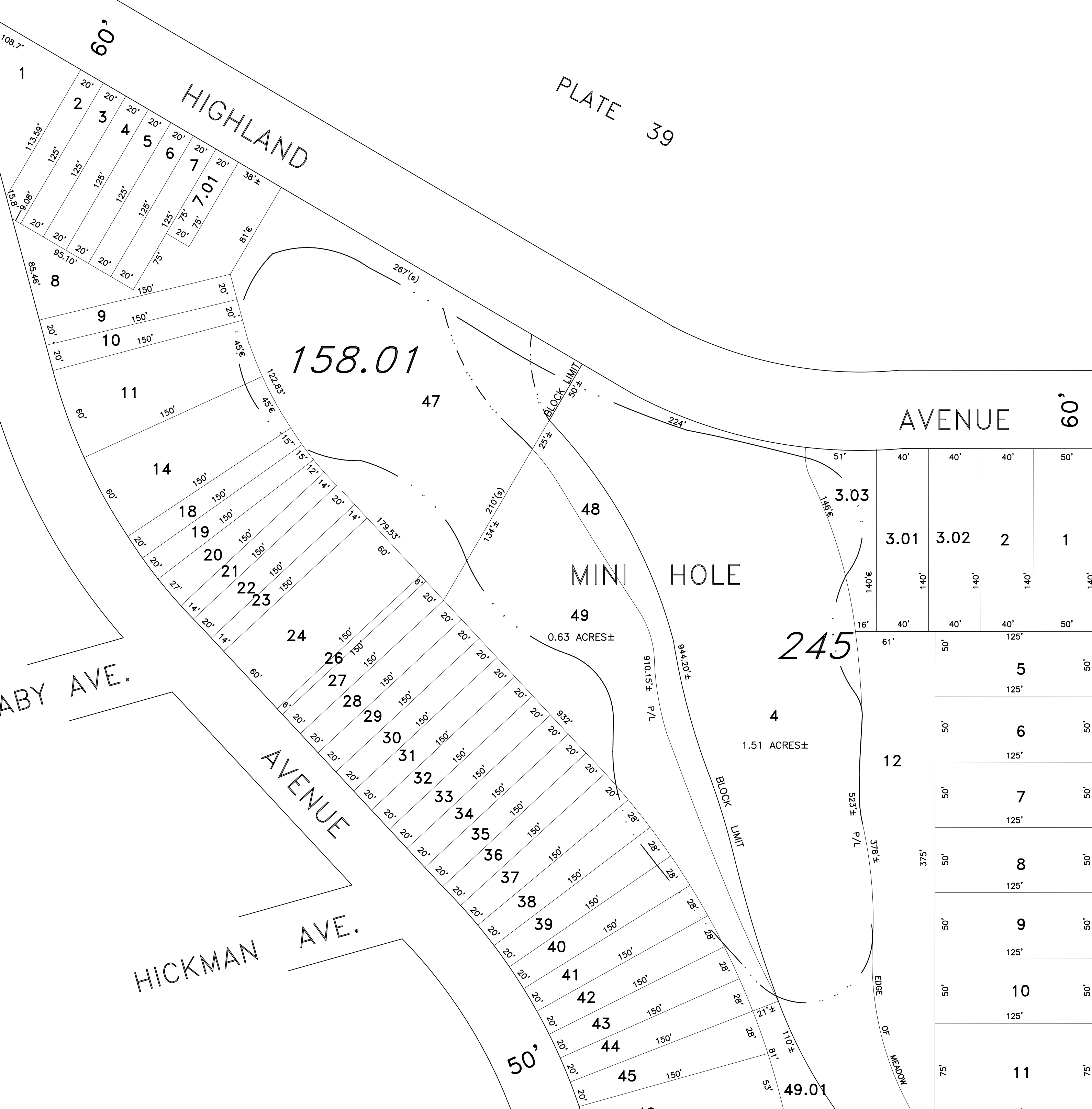


PLATE 40

GREENWOOD AVENUE

50'

PARK AVENUE 40'

PLATE 41

"THIS TAX MAP PLATE HAS BEEN DIGITALLY DRAWN USING COMPUTER-AIDED DRAFTING/DESIGN (CADD) AND COORDINATE GEOMETRY (COGO). IT IS BASED ON THE ORIGINAL DIGITALLY DRAWN TAX MAP PLATE BEARING THE OFFICIAL NEW JERSEY DIVISION OF TAXATION APPROVAL STAMP WITH APPROVAL DATE 3-24-1994, SERIAL NUMBER 759 AND SIGNATURE OF SIGNER IVAN HAFKOWYCZ P.E., L.S. THIS TAX MAP PLATE HAS BEEN DIGITALLY UPDATED TO REFLECT CONDITIONS AS OF 11-18-2004. THE ORIGINAL DRAWN TAX MAP PLATE WITH THE OFFICIAL APPROVAL STAMP IS ON FILE WITH REMINGTON AND VERNICK ENGINEERS."

**TAX MAP**  
**CITY OF GLOUCESTER**

CAMDEN COUNTY NEW JERSEY

SCALE: 1" = 50' DATE: 5-15-1992

CRAIG F. REMINGTON LAND SURVEYOR LIC. NO. 23924



24 GA 28003800  
**REMINGTON & VERNICK ENGINEERS**  
232 KING'S HIGHWAY EAST HADDONFIELD, N.J. 08033  
(856) 795-9595, FAX (856) 795-1882  
WEB SITE ADDRESS: WWW.RVVE.COM