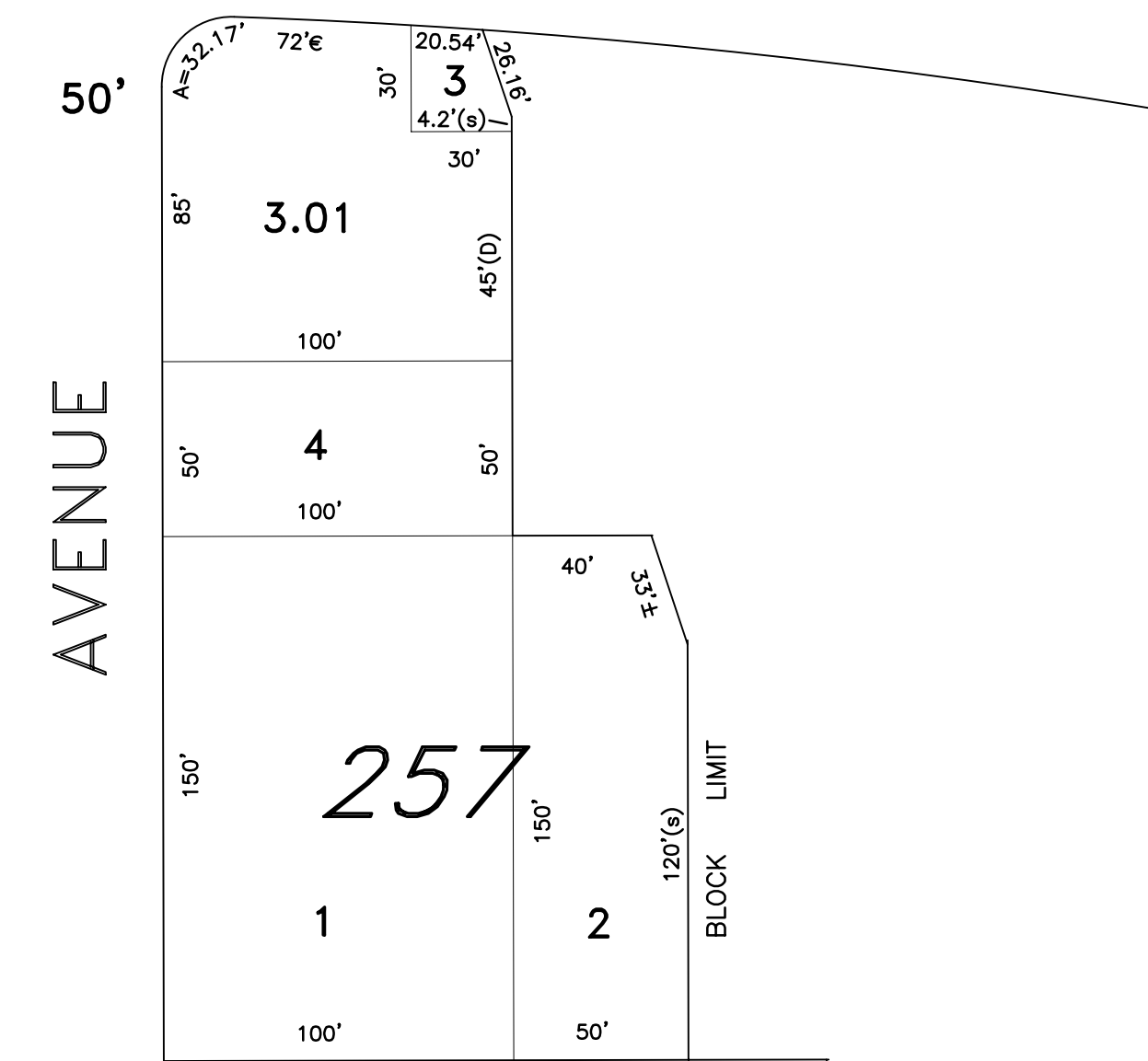
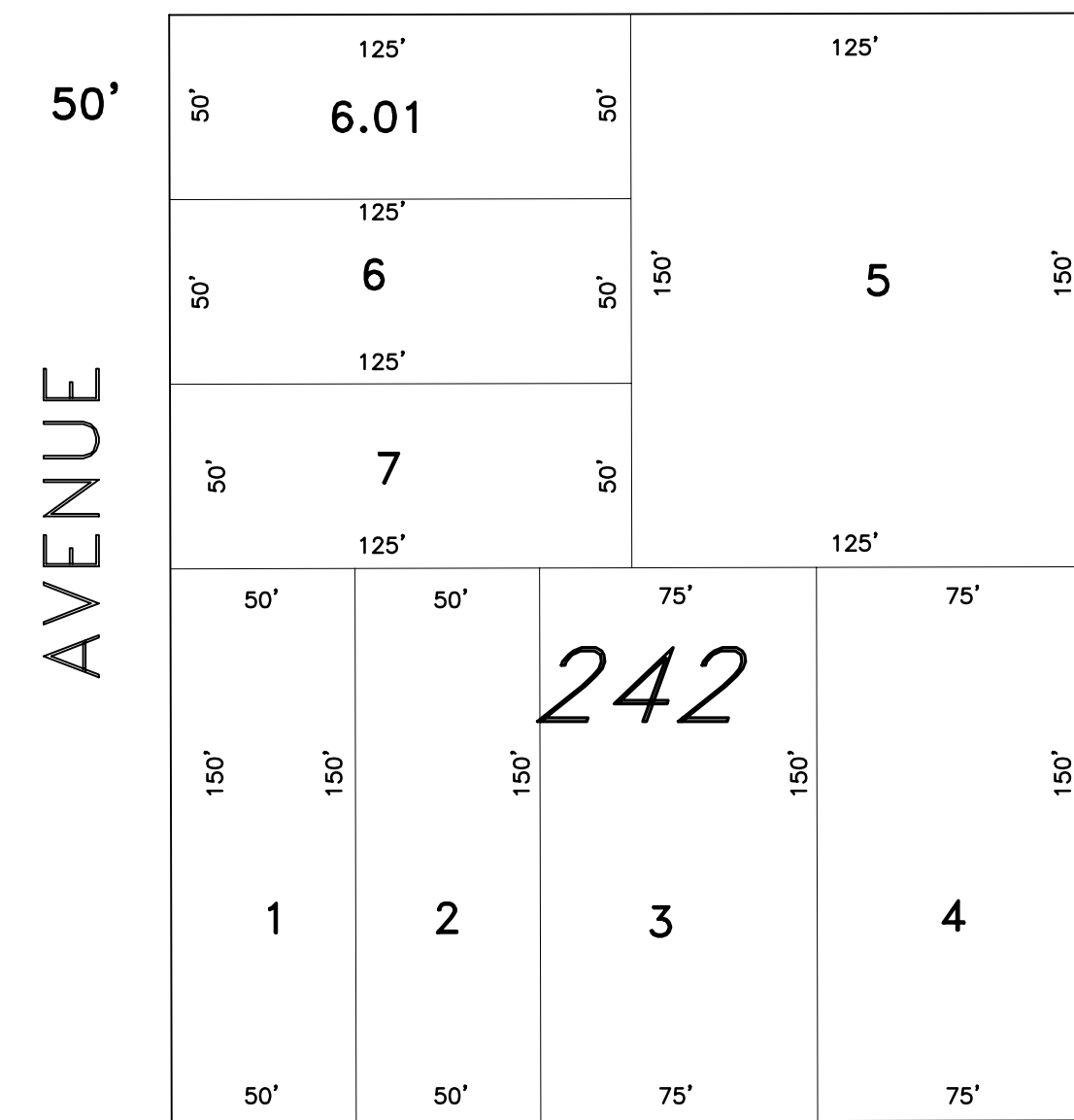
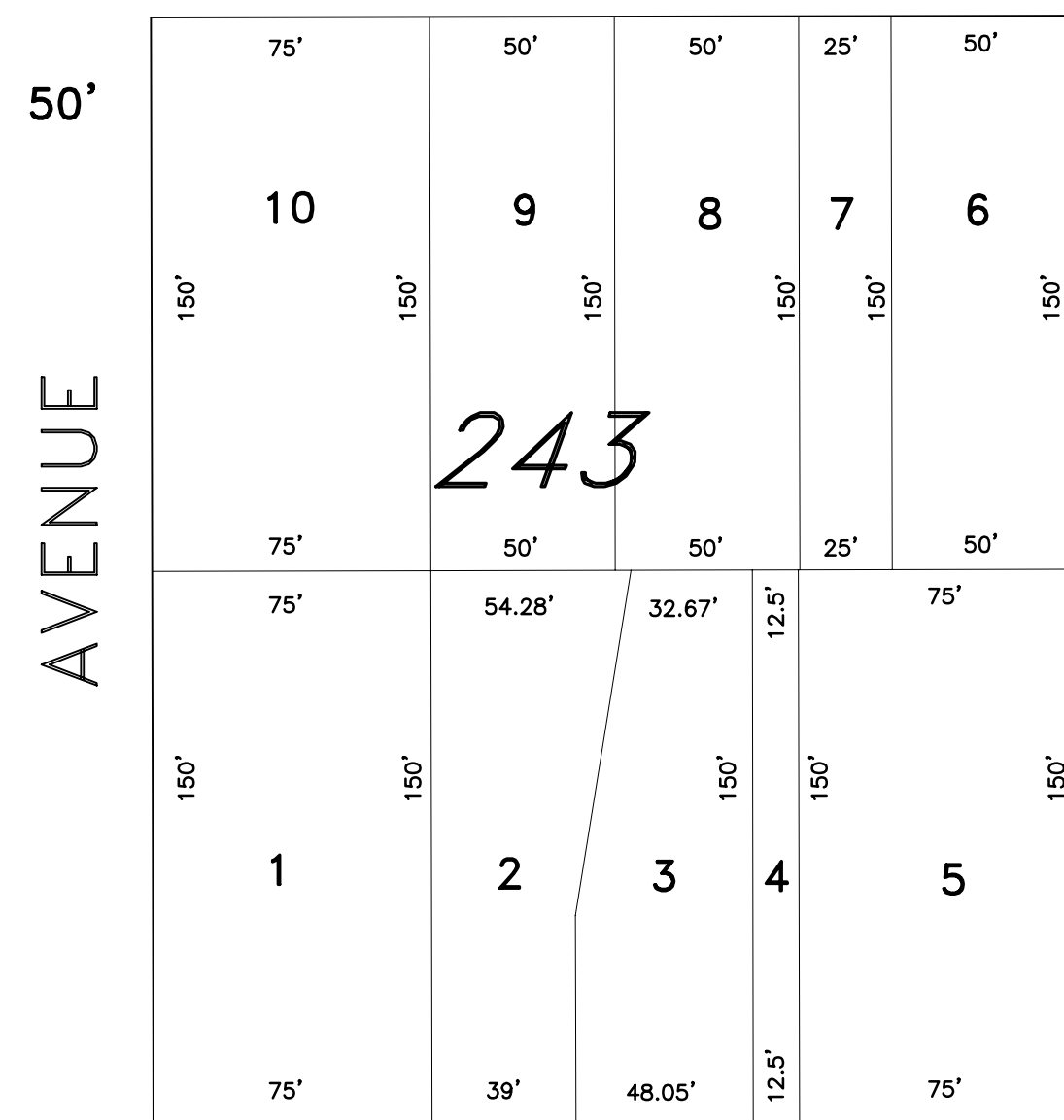


PLATE 51

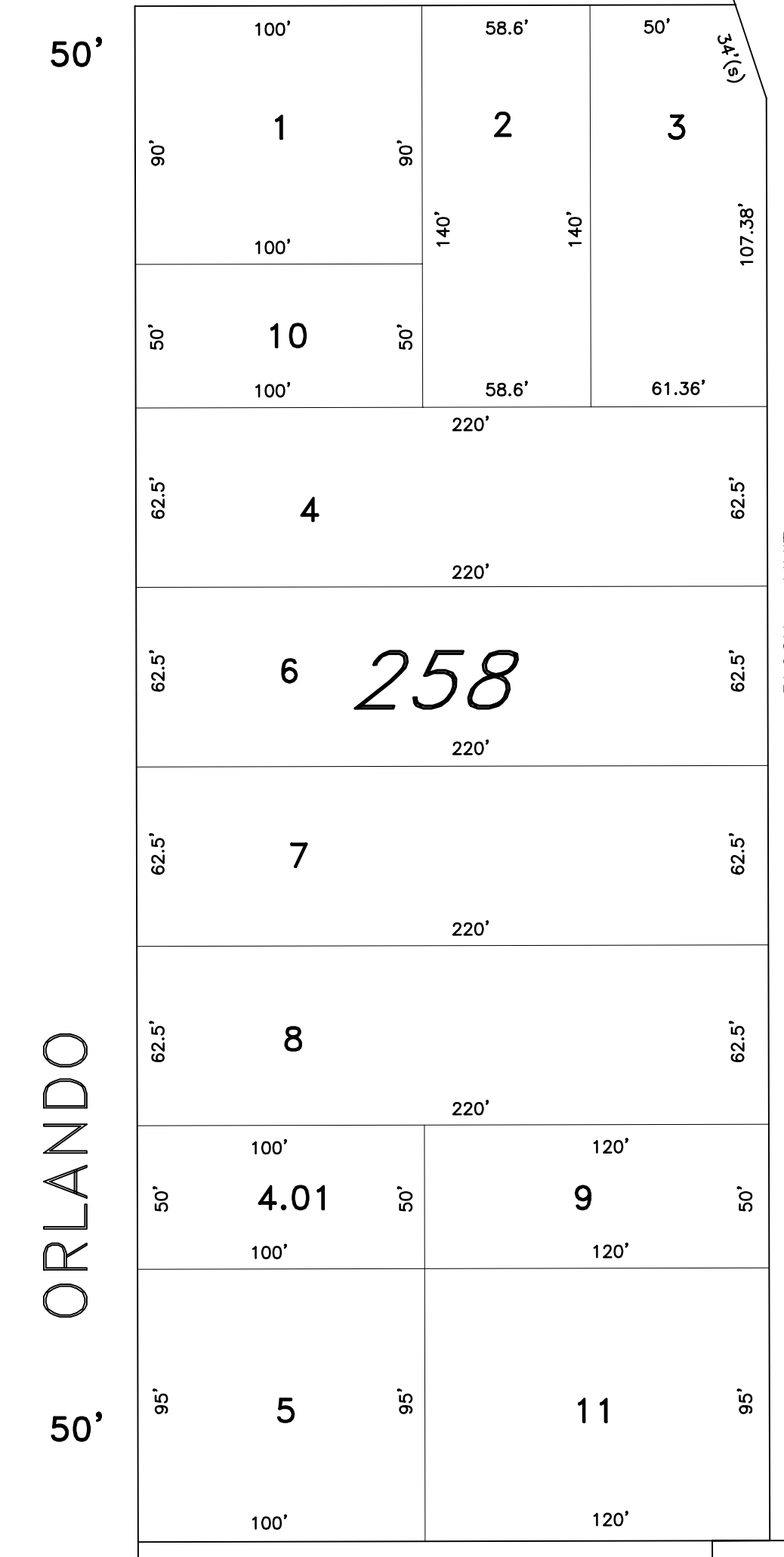
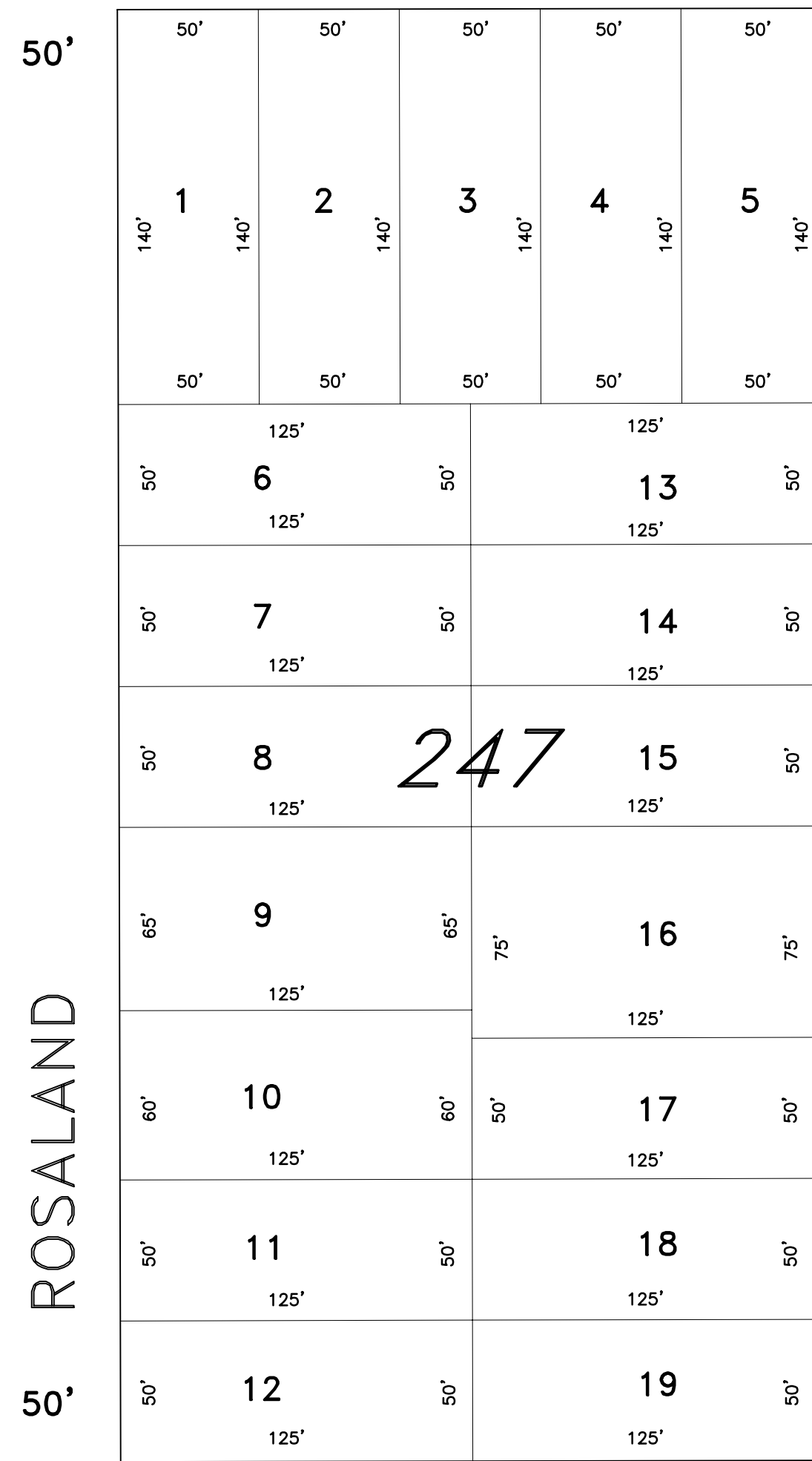
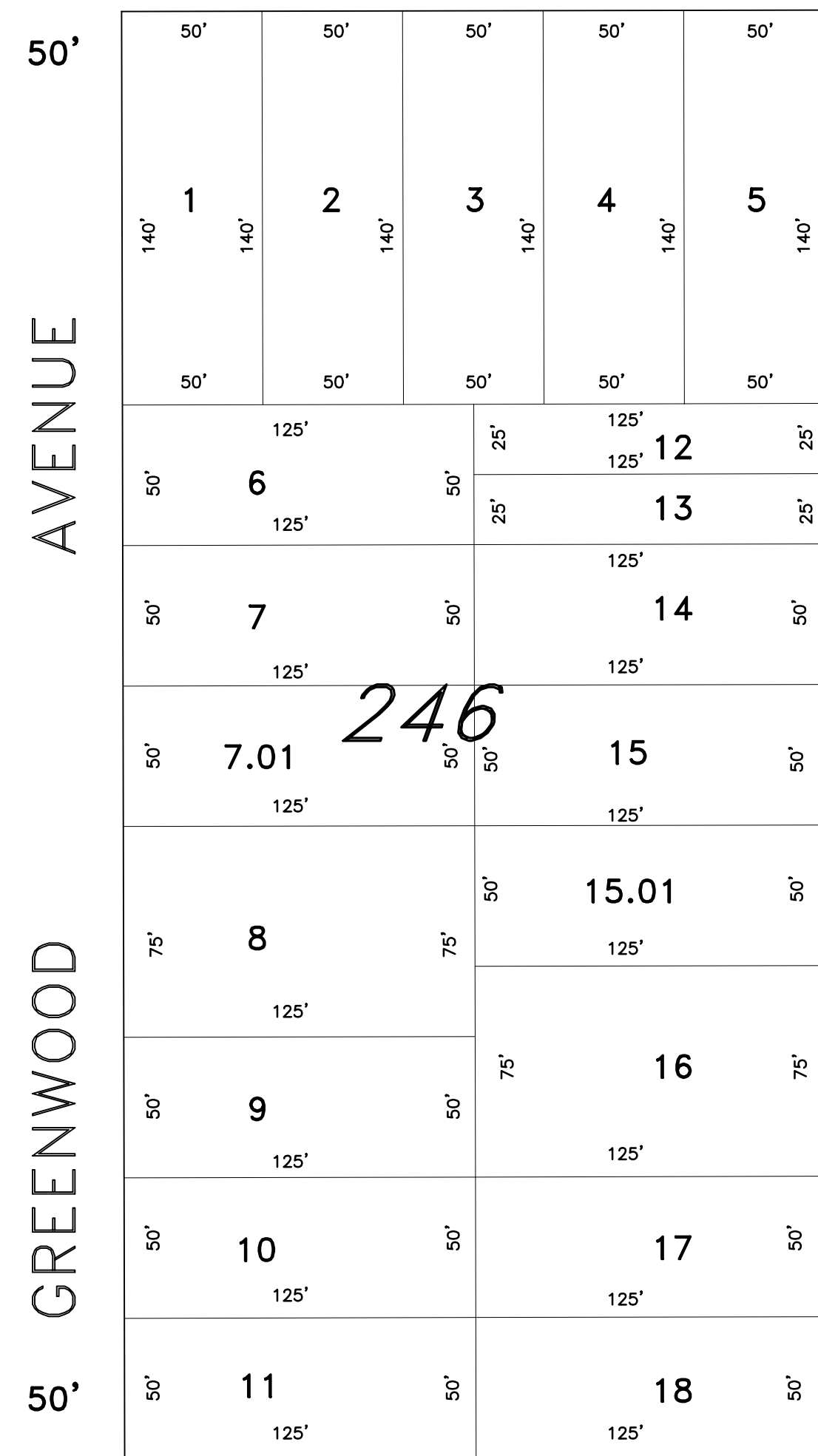
40' CONRAIL (FORMERLY P.R.S.L.) - GLOUCESTER & MT. EPHRAIM BR. 40'

40' KLEMM

PLATE 39



60' HIGHLAND

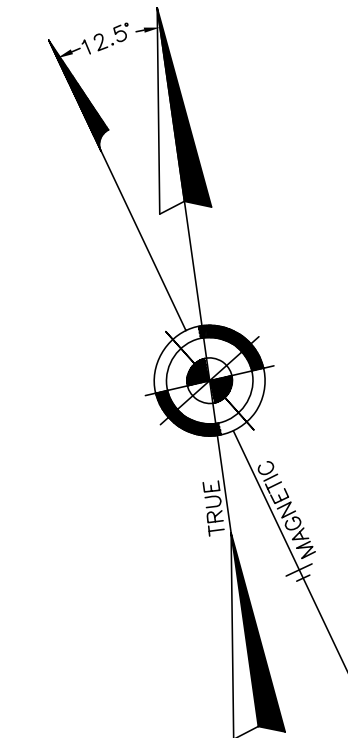


40' PARK

PLATE 41

AVENUE

PLATE 42



"THIS TAX MAP PLATE HAS BEEN DIGITALLY DRAWN USING COMPUTER-AIDED DRAFTING/DESIGN (CAD) AND COORDINATE GEOMETRY (COGO). IT IS BASED ON THE ORIGINAL DIGITALLY DRAWN TAX MAP PLATE BEARING THE OFFICIAL NEW JERSEY DIVISION OF TAXATION APPROVAL STAMP WITH APPROVAL DATE 3-24-1994, SERIAL NUMBER 759 AND SIGNATURE OF SIGNER IVAN HATKOWICZ P.E., L.S. THIS TAX MAP PLATE HAS BEEN DIGITALLY UPDATED TO REFLECT CONDITIONS AS OF 11-18-2004. THE ORIGINAL DRAWN TAX MAP PLATE WITH THE OFFICIAL APPROVAL STAMP IS ON FILE WITH REMINGTON AND VERNICK ENGINEERS."

**TAX MAP**  
**CITY OF GLOUCESTER**  
 CAMDEN COUNTY NEW JERSEY

SCALE: 1" = 50' DATE: 5-15-1992

CRAIG F. REMINGTON LAND SURVEYOR LIC. NO. 23924



24 GA 28003800  
**REMINGTON & VERNICK ENGINEERS**  
 232 KING'S HIGHWAY EAST HADDONFIELD, N.J. 08033  
 (856) 795-9595, FAX (856) 795-8882  
 WEB SITE ADDRESS WWW.RV.E.COM