

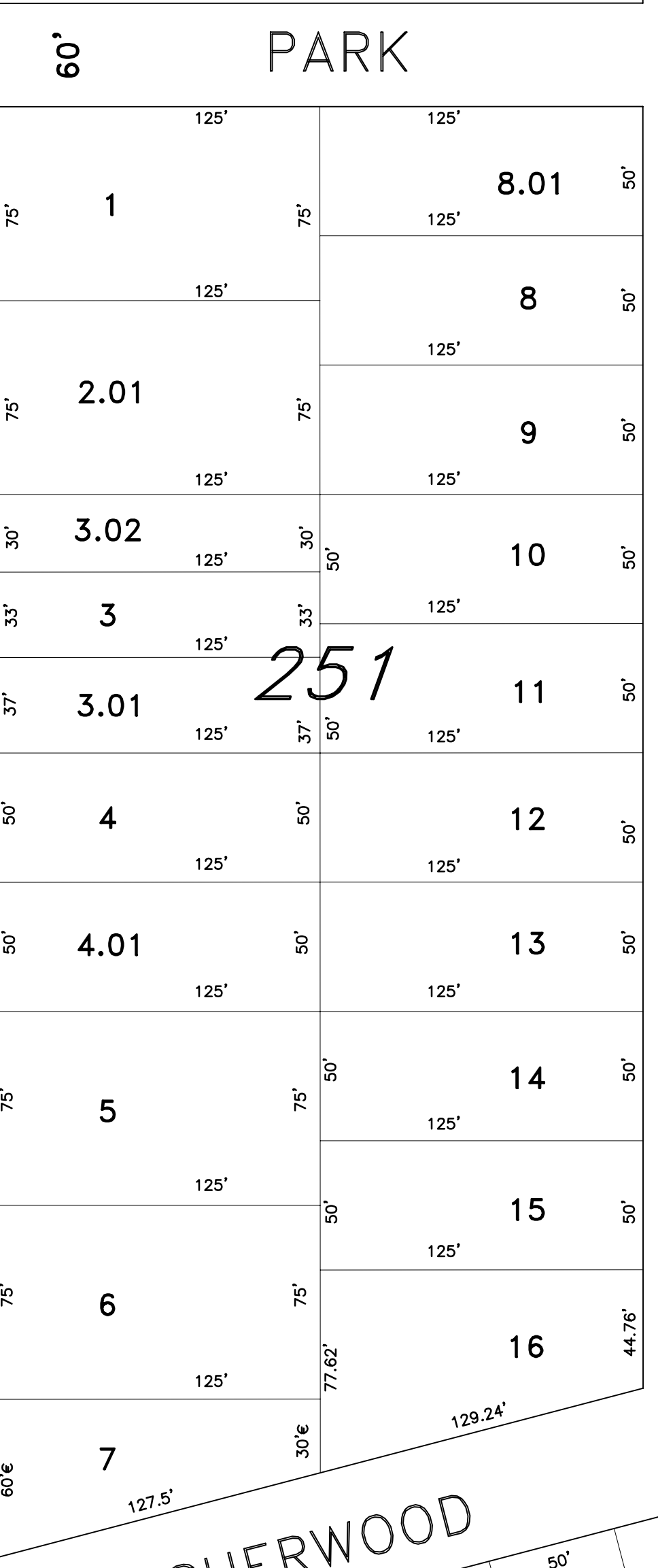
50' GREENWOOD AVENUE

MARKET STREET

PLATE 36

PLATE 41

ROSALAND AVENUE



SYLVAN AVENUE

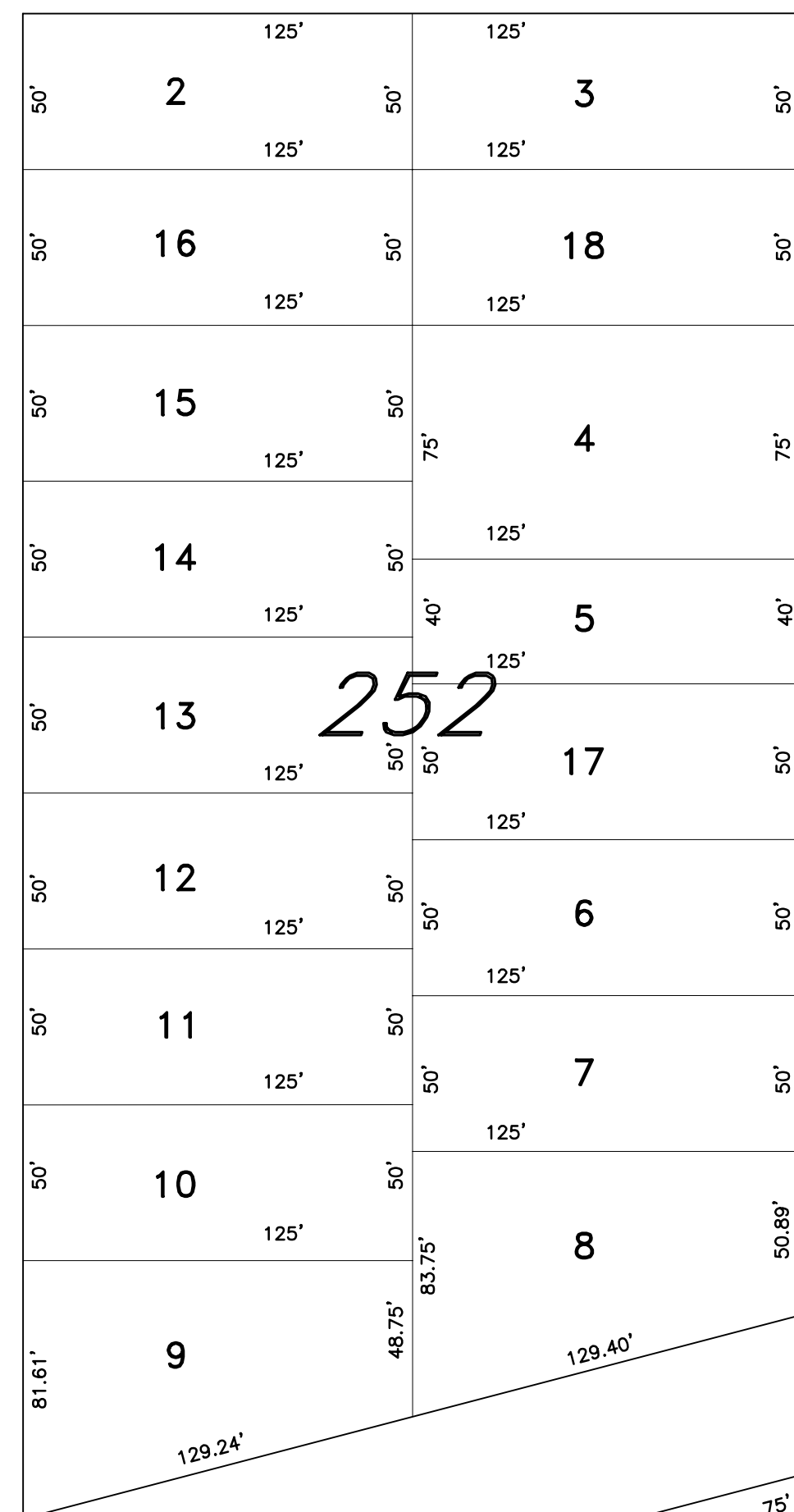
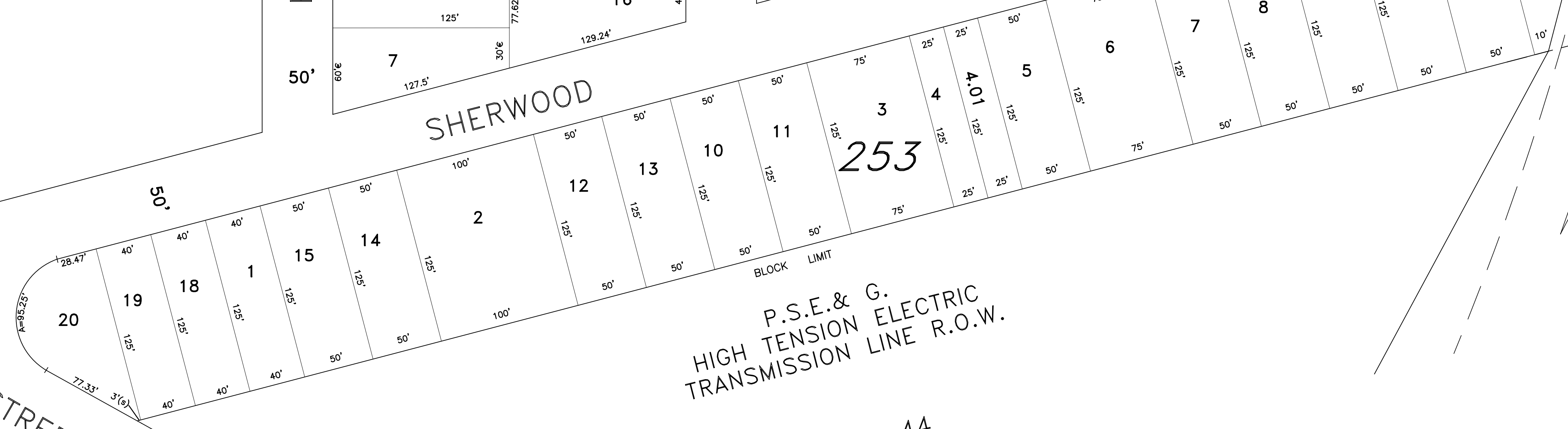


PLATE 44

SHERWOOD AVENUE

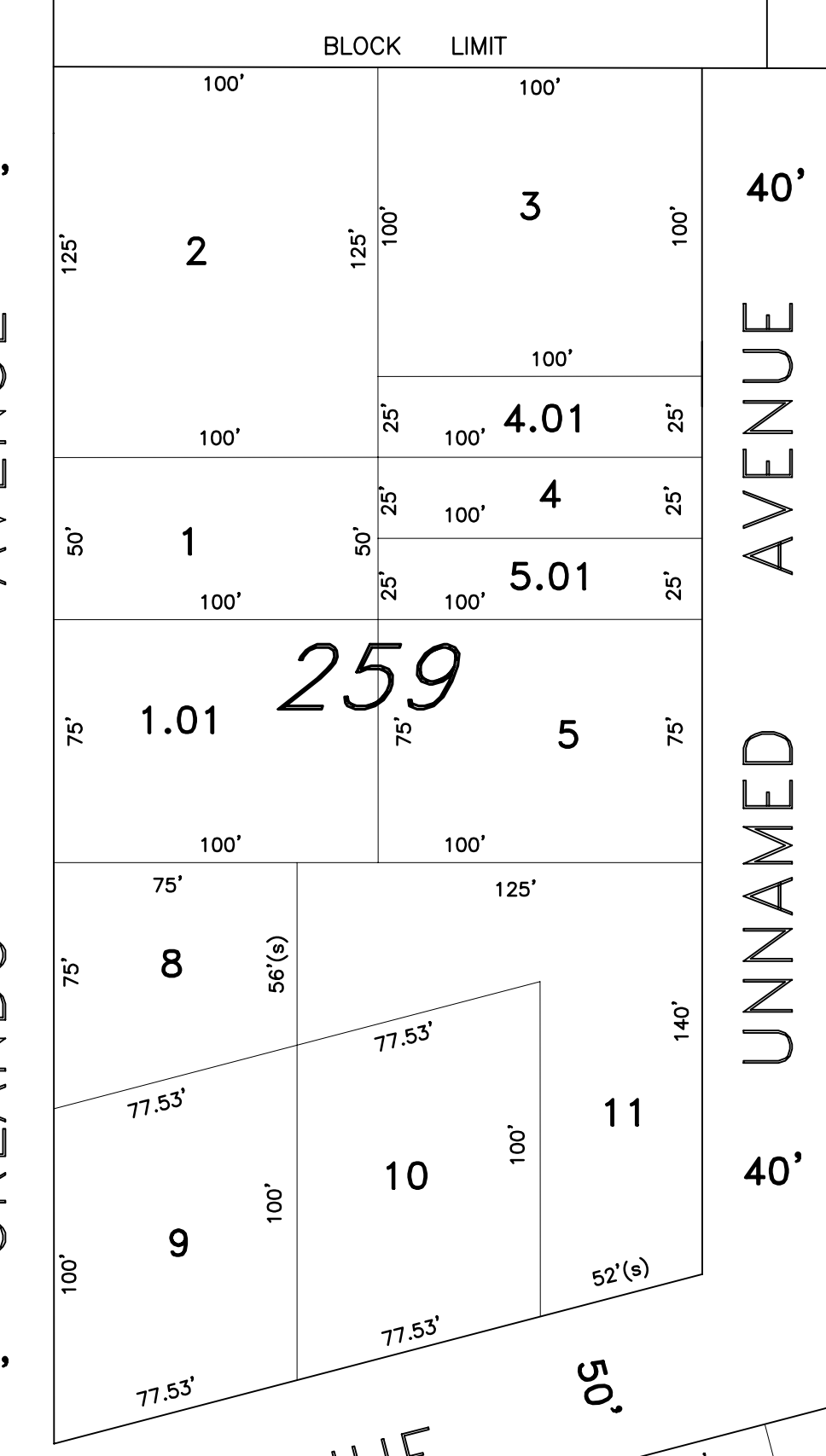


P.S.E. & G. HIGH TENSION ELECTRIC TRANSMISSION LINE R.O.W.

PLATE 40

PLATE 40

ORLANDO AVENUE



UNNAMED AVENUE

ROUTE 42 - U.S. 130 SOUTH

ROUTE U.S. 130 - SOUTH

PLATE 43

"THIS TAX MAP PLATE HAS BEEN DIGITALLY DRAWN USING COMPUTER-AIDED DRAFTING/DESIGN (CADD) AND COORDINATE GEOMETRY (COGO). IT IS BASED ON THE ORIGINAL DIGITALLY DRAWN TAX MAP PLATE BEARING THE OFFICIAL NEW JERSEY DIVISION OF TAXATION APPROVAL STAMP WITH APPROVAL DATE 3-24-1994, SERIAL NUMBER 759 AND SIGNATURE OF SIGNER IVAN HAFKOWYCZ P.E., L.S. THIS TAX MAP PLATE HAS BEEN DIGITALLY UPDATED TO REFLECT CONDITIONS AS OF 11-18-2004. THE ORIGINAL DRAWN TAX MAP PLATE WITH THE OFFICIAL APPROVAL STAMP IS ON FILE WITH REMINGTON AND VERNICK ENGINEERS."

**TAX MAP**  
**CITY OF GLOUCESTER**  
 CAMDEN COUNTY NEW JERSEY  
 SCALE: 1" = 50' DATE: 5-15-1992  
**CRAIG F. REMINGTON LAND SURVEYOR LIC. NO. 23924**  
 24 GA 28003800  
**REMINGTON & VERNICK ENGINEERS**  
 232 KING'S HIGHWAY EAST HADDONFIELD, N.J. 08033  
 (856) 795-9595, FAX (856) 795-1882  
 WEB SITE ADDRESS WWW.RVVE.COM