

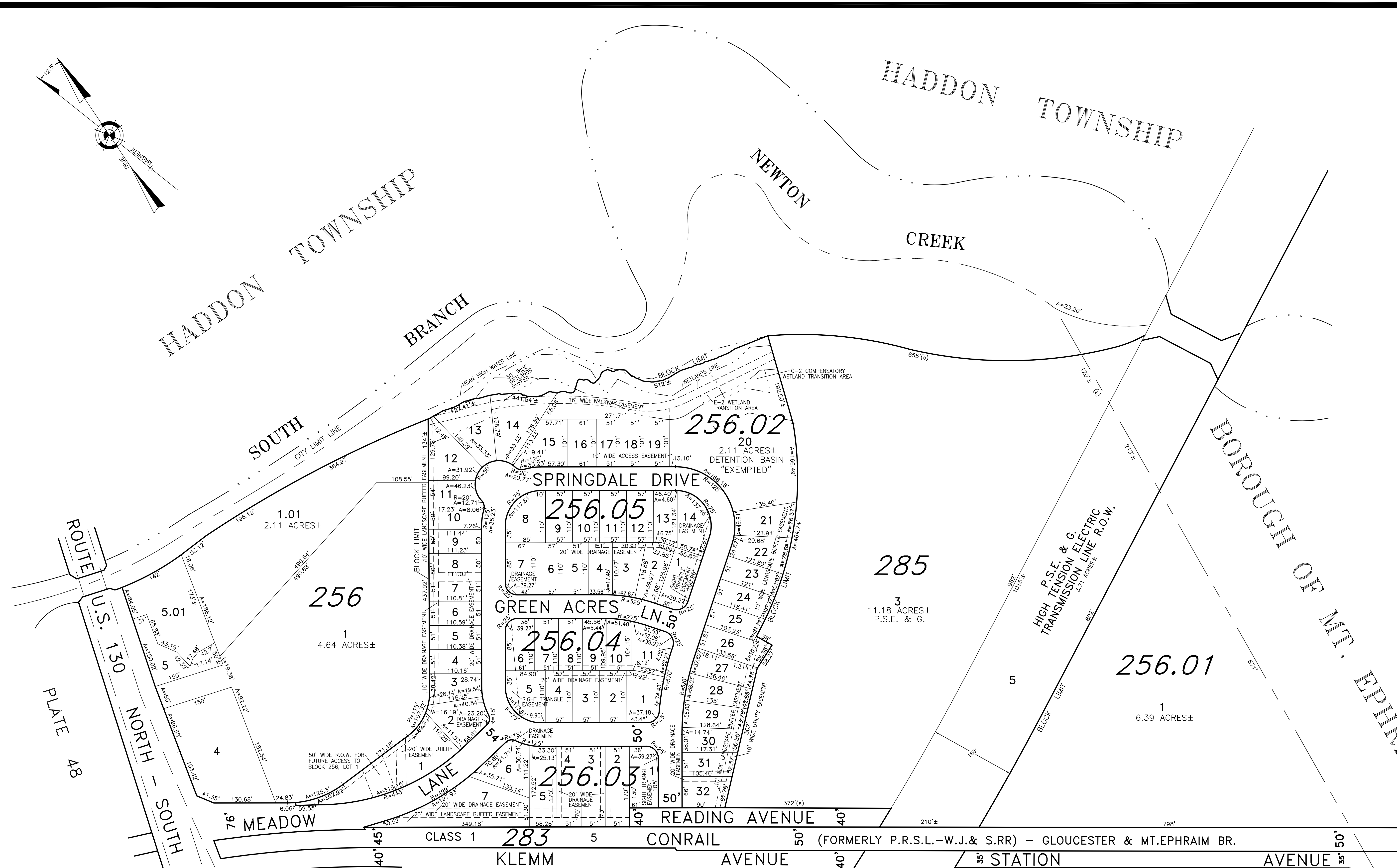
HADDON TOWNSHIP

HADDON TOWNSHIP

NEWTON CREEK

SOUTH BRANCH

BOROUGH OF MT. EPHRAIM



ROUTE U.S. 130  
PLATE 88  
NORTH - SOUTH

256  
1  
4.64 ACRES±

256.05  
8  
256.04  
5  
256.03  
4

256.02  
20  
2.11 ACRES±  
DETENTION BASIN  
"EXEMPTED"

285  
3  
11.18 ACRES±  
P.S.E. & G.

256.01  
1  
6.39 ACRES±

283  
5  
KLEMM AVENUE

STATION AVENUE

PLATE 46

PLATE 43

**TAX MAP**  
**CITY OF GLOUCESTER**

CAMDEN COUNTY NEW JERSEY  
SCALE: 1" = 100' DATE: 5-15-1992

CRAIG F. REMINGTON LAND SURVEYOR LIC. NO. 23924

24 GA 28003800  
**REMINGTON & VERNICK ENGINEERS**  
232 KING'S HIGHWAY EAST HADDONFIELD, N.J. 08033  
(856) 795-9595, FAX (856) 795-1882  
WEB SITE ADDRESS: WWW.RVE.COM

"THIS TAX MAP PLATE HAS BEEN DIGITALLY DRAWN USING COMPUTER-AIDED DRAFTING/DESIGN (CADD) AND COORDINATE GEOMETRY (COGO). IT IS BASED ON THE ORIGINAL DIGITALLY DRAWN TAX MAP PLATE BEARING THE OFFICIAL NEW JERSEY DIVISION OF TAXATION APPROVAL STAMP WITH APPROVAL DATE 3-24-1994, SERIAL NUMBER 759 AND SIGNATURE OF SIGNER IVAN HAFKOWYCZ P.E., L.S. THIS TAX MAP PLATE HAS BEEN DIGITALLY UPDATED TO REFLECT CONDITIONS AS OF 5-1-2007. THE ORIGINAL DRAWN TAX MAP PLATE WITH THE OFFICIAL APPROVAL STAMP IS ON FILE WITH REMINGTON AND VERNICK ENGINEERS."



REVISED BY REMINGTON & VERNICK ENGINEERS - 5-1-2007