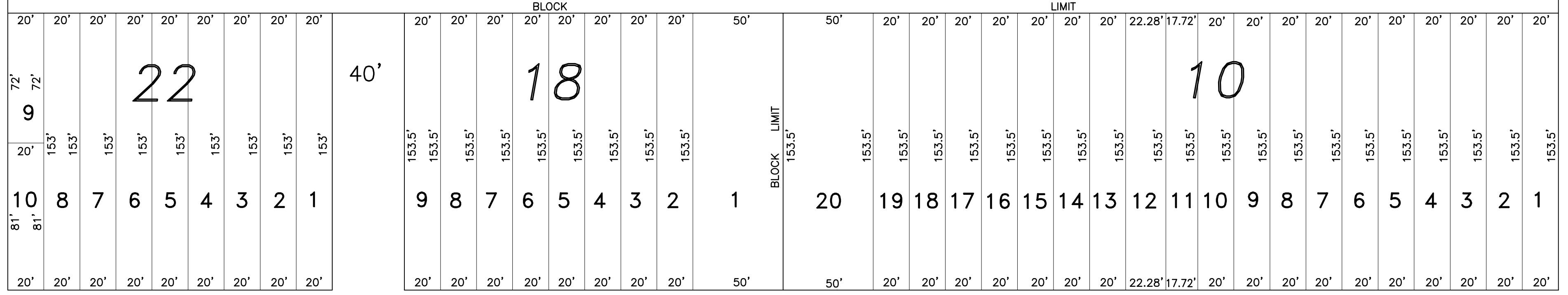


ELLIS ST.

PLATE 56

ELLIS ST.



60'

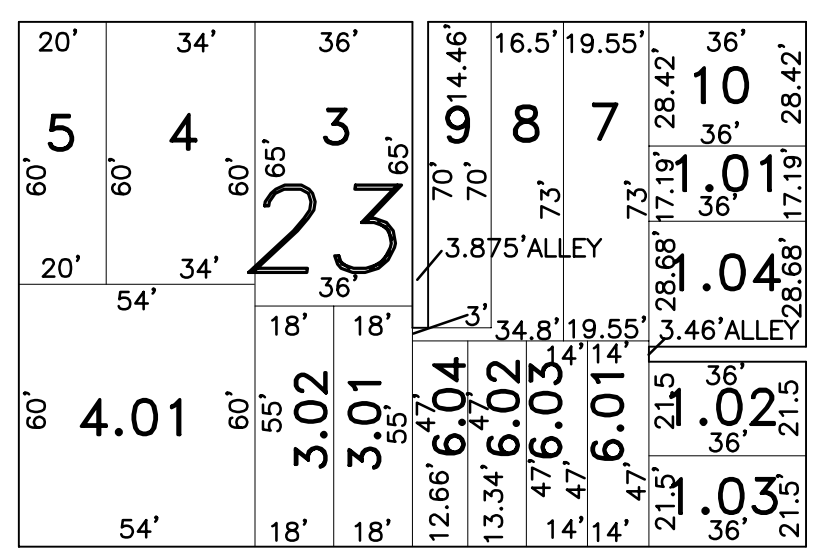
KING STREET

STREET

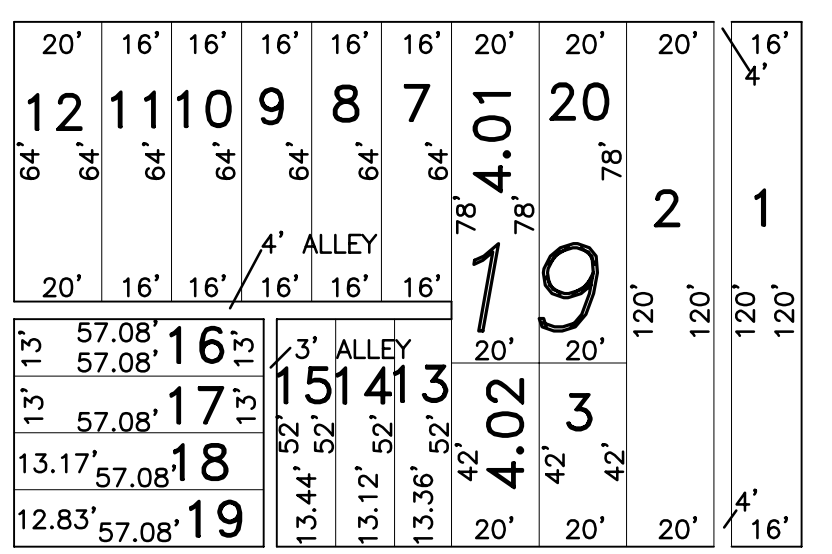
60'

PLATE 4

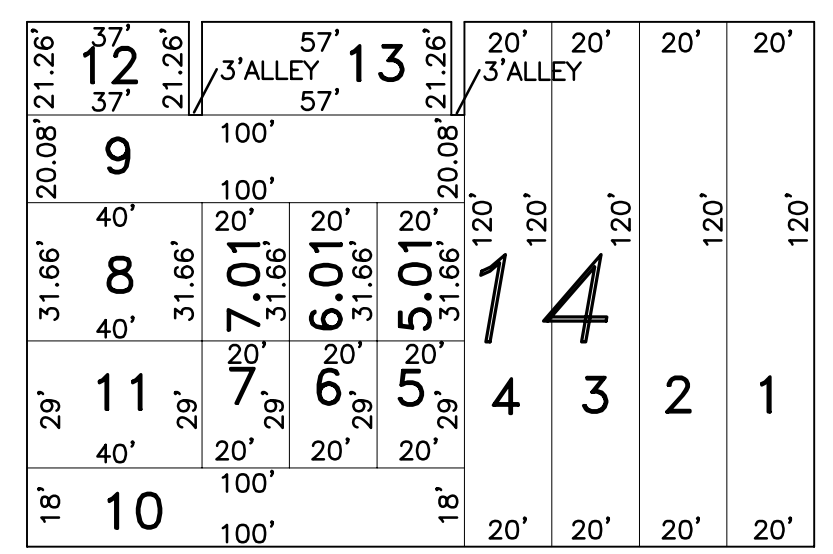
MERCER STREET



MORRIS STREET



ESSEX STREET



40'

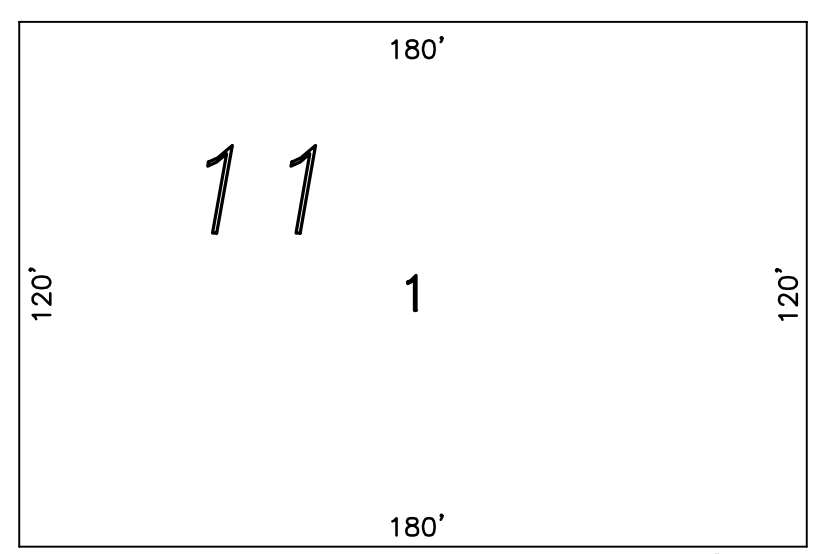
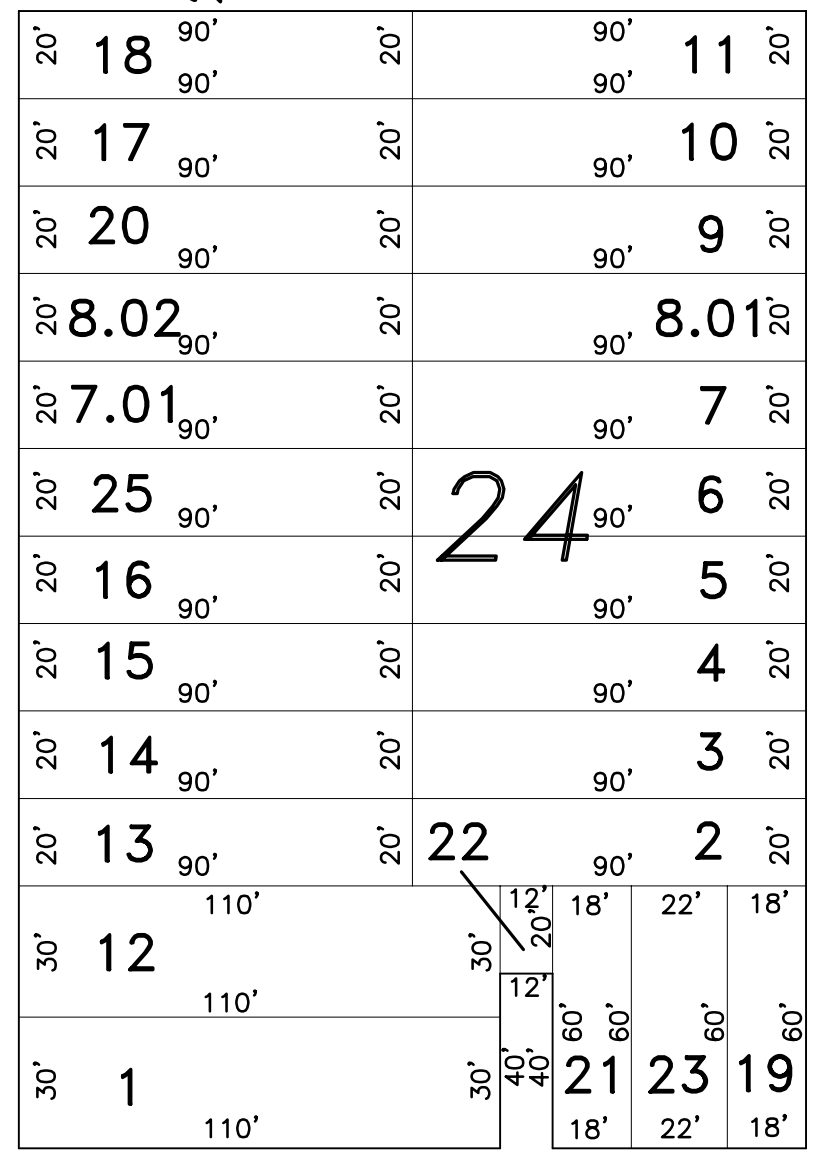


PLATE 1

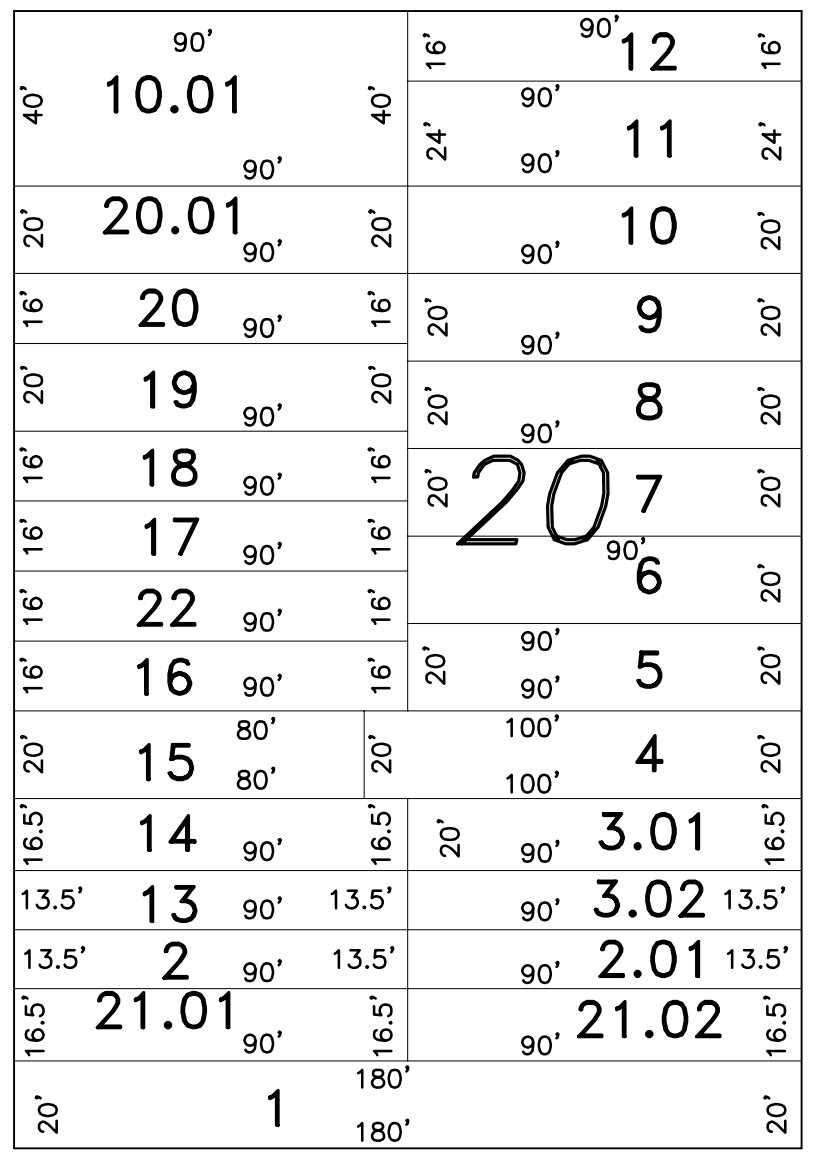
STREET

WARREN STREET

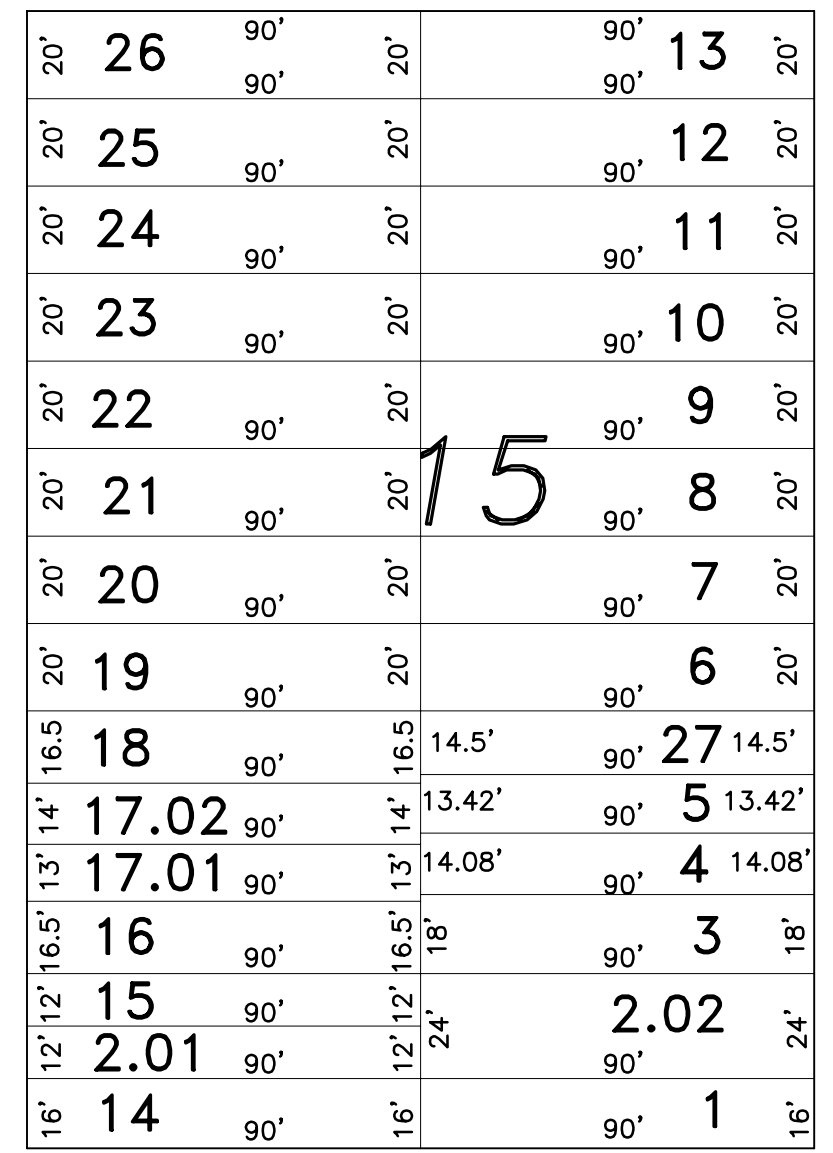
MERCER STREET



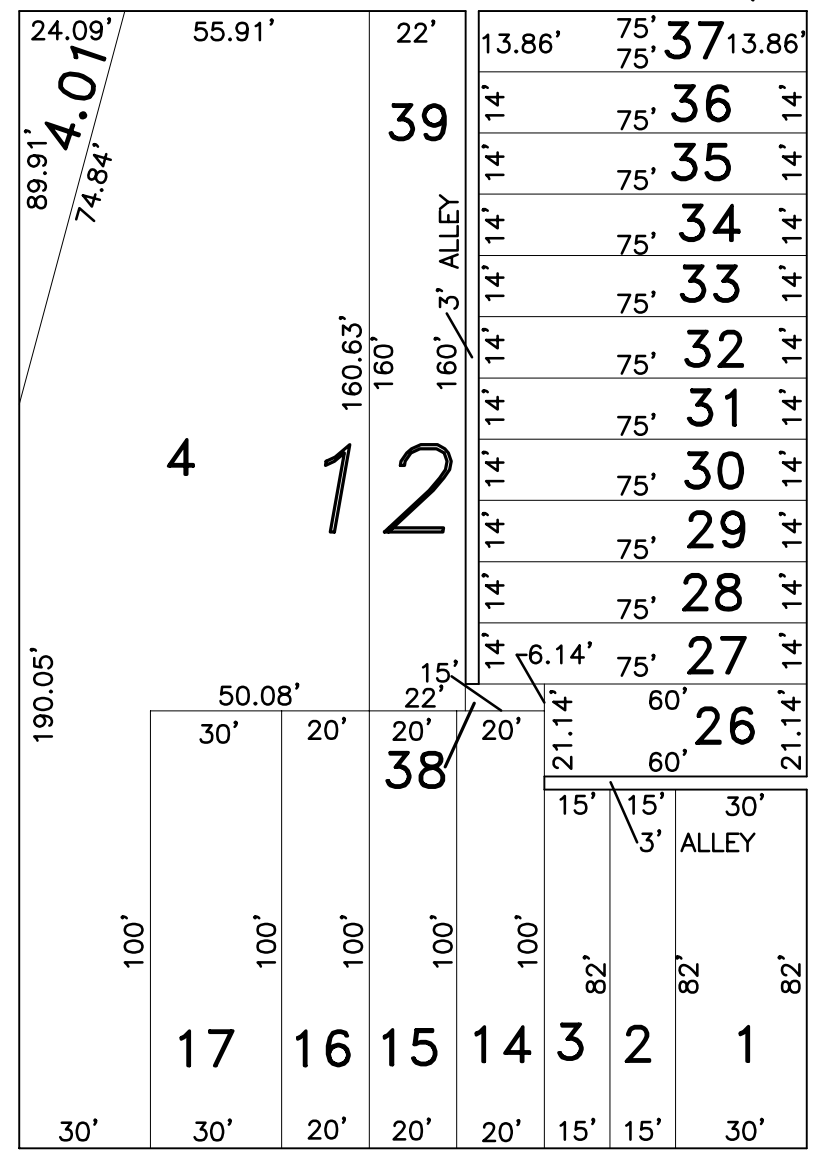
MORRIS STREET



ESSEX STREET



SALEM STREET



60'

NORTH BURLINGTON STREET

STREET

60'

PLATE 5

PLATE 3

BROADWAY

WARREN STREET

THIS TAX MAP PLATE HAS BEEN DIGITALLY DRAWN USING COMPUTER-AIDED DRAFTING/DESIGN (CADD) AND COORDINATE GEOMETRY (COGO). IT IS BASED ON THE ORIGINAL DIGITALLY DRAWN TAX MAP PLATE BEARING THE OFFICIAL NEW JERSEY DIVISION OF TAXATION APPROVAL STAMP WITH APPROVAL DATE 3-24-1994, SERIAL NUMBER 759 AND SIGNATURE OF SIGNER IVAN HAFTKOWYCZ P.E., L.S. THIS TAX MAP PLATE HAS BEEN DIGITALLY UPDATED TO REFLECT CONDITIONS AS OF 11-18-2004. THE ORIGINAL DRAWN TAX MAP PLATE WITH THE OFFICIAL APPROVAL STAMP IS ON FILE WITH REMINGTON AND VERNICK ENGINEERS.

TAX MAP CITY OF GLOUCESTER CAMDEN COUNTY NEW JERSEY

SCALE: 1" = 50' DATE: 5/15/1992 CRAIG F. REMINGTON LAND SURVEYOR LIC. NO. 23924



REMINGTON & VERNICK ENGINEERS 232 KING'S HIGHWAY EAST HADDONFIELD, N.J. 08033 (856) 795-9595, FAX (856) 795-8882 WEB SITE ADDRESS WWW.RVE.COM