

PLATE 56

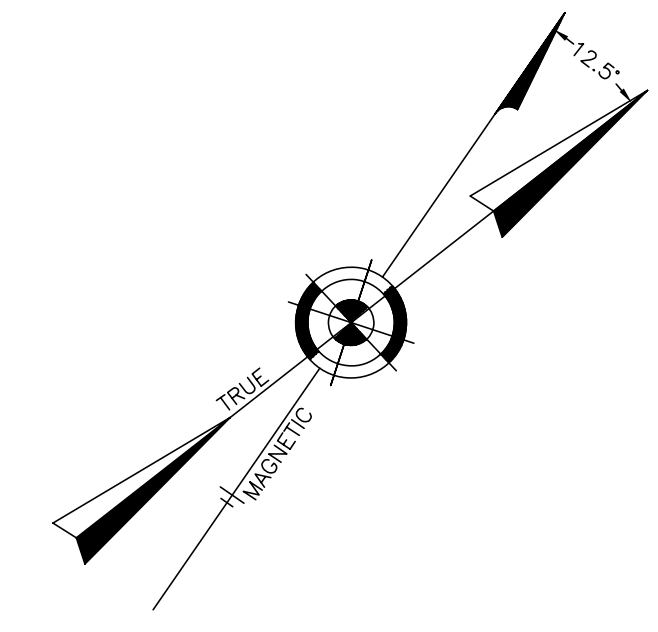


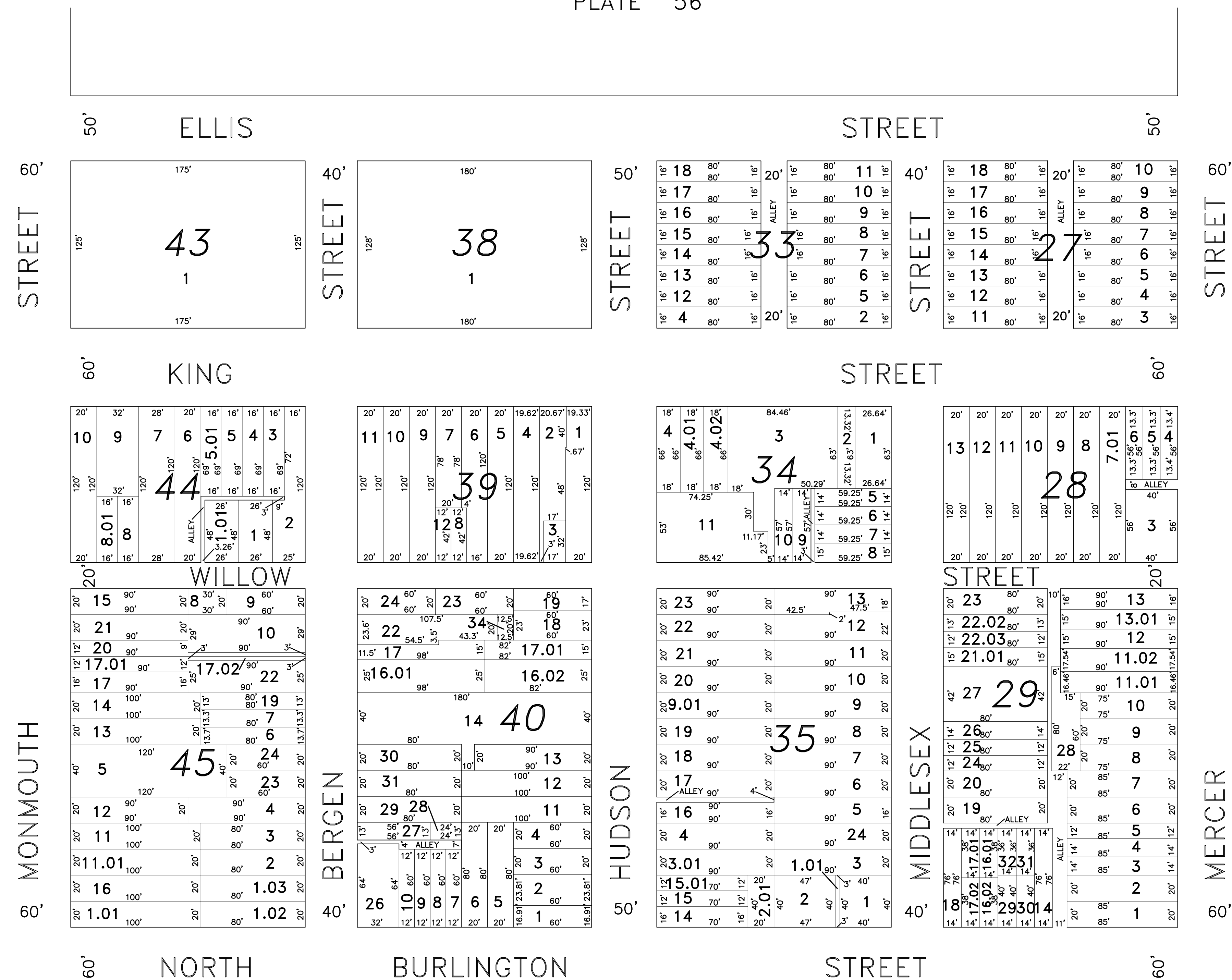
PLATE 57

PLATE 7

PLATE 2

PLATE 3

PLATE 5



"THIS TAX MAP PLATE HAS BEEN DIGITALLY DRAWN USING COMPUTER-AIDED DRAFTING/DESIGN (CADD) AND COORDINATE GEOMETRY (COGO). IT IS BASED ON THE ORIGINAL DIGITALLY DRAWN TAX MAP PLATE BEARING THE OFFICIAL NEW JERSEY DIVISION OF TAXATION APPROVAL STAMP WITH APPROVAL DATE 3-24-1994, SERIAL NUMBER 759 AND SIGNATURE OF SIGNER IVAN HAFKOWYCZ P.E., L.S. THIS TAX MAP PLATE HAS BEEN DIGITALLY UPDATED TO REFLECT CONDITIONS AS OF 11-18-2004. THE ORIGINAL DRAWN TAX MAP PLATE WITH THE OFFICIAL APPROVAL STAMP IS ON FILE WITH REMINGTON AND VERNICK ENGINEERS."

TAX MAP
CITY OF GLOUCESTER
 CAMDEN COUNTY NEW JERSEY
 SCALE: 1" = 50' DATE: 5-15-1992
CRAIG F. REMINGTON LAND SURVEYOR LIC. NO. 23924
 24 GA 28003800
REMINGTON & VERNICK ENGINEERS
 232 KING'S HIGHWAY EAST HADDONFIELD, N.J. 08033
 (856) 795-9595, FAX (856) 795-8882
 WEB SITE ADDRESS: WWW.RVCE.COM