

PLATE 7

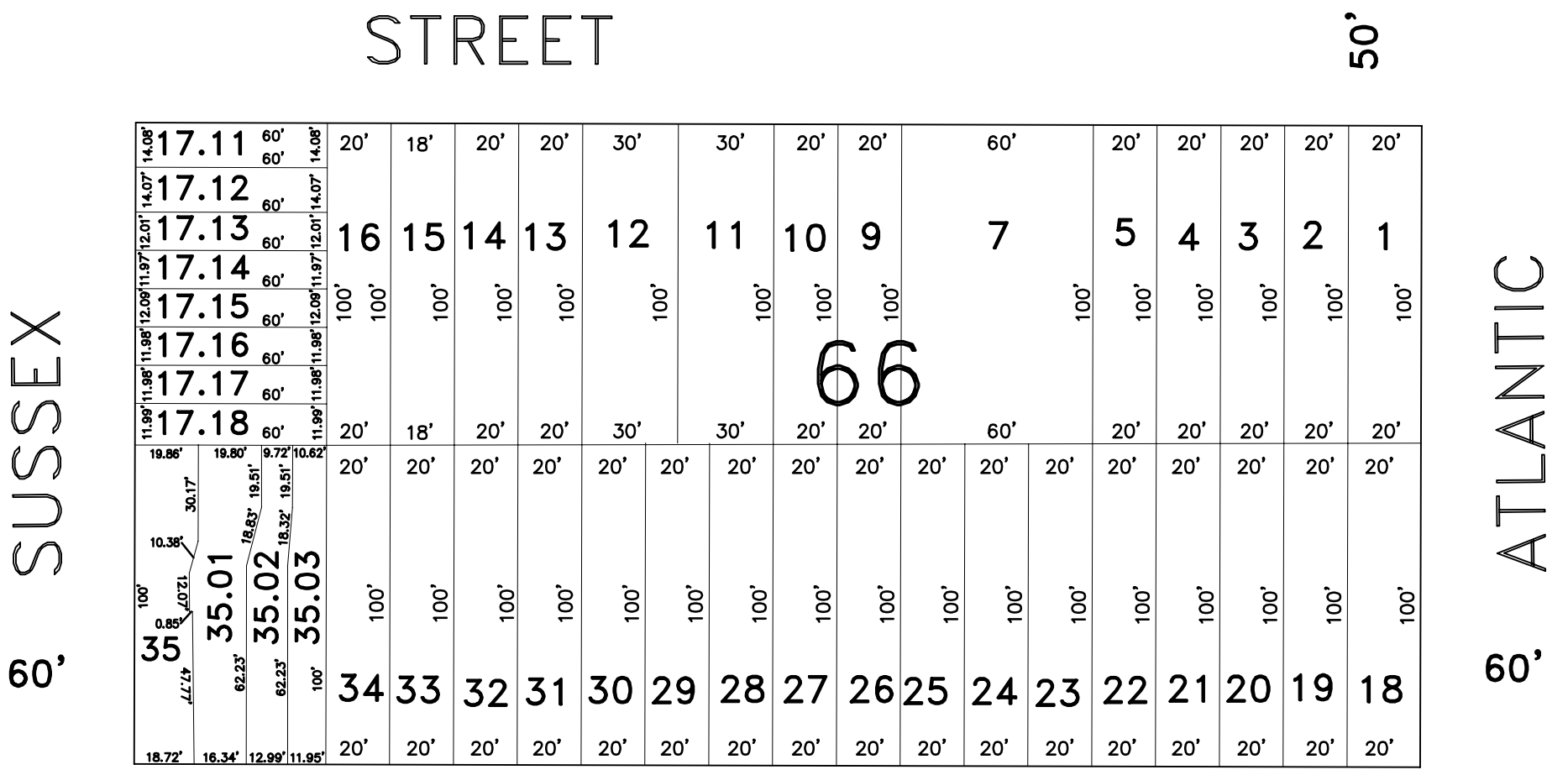
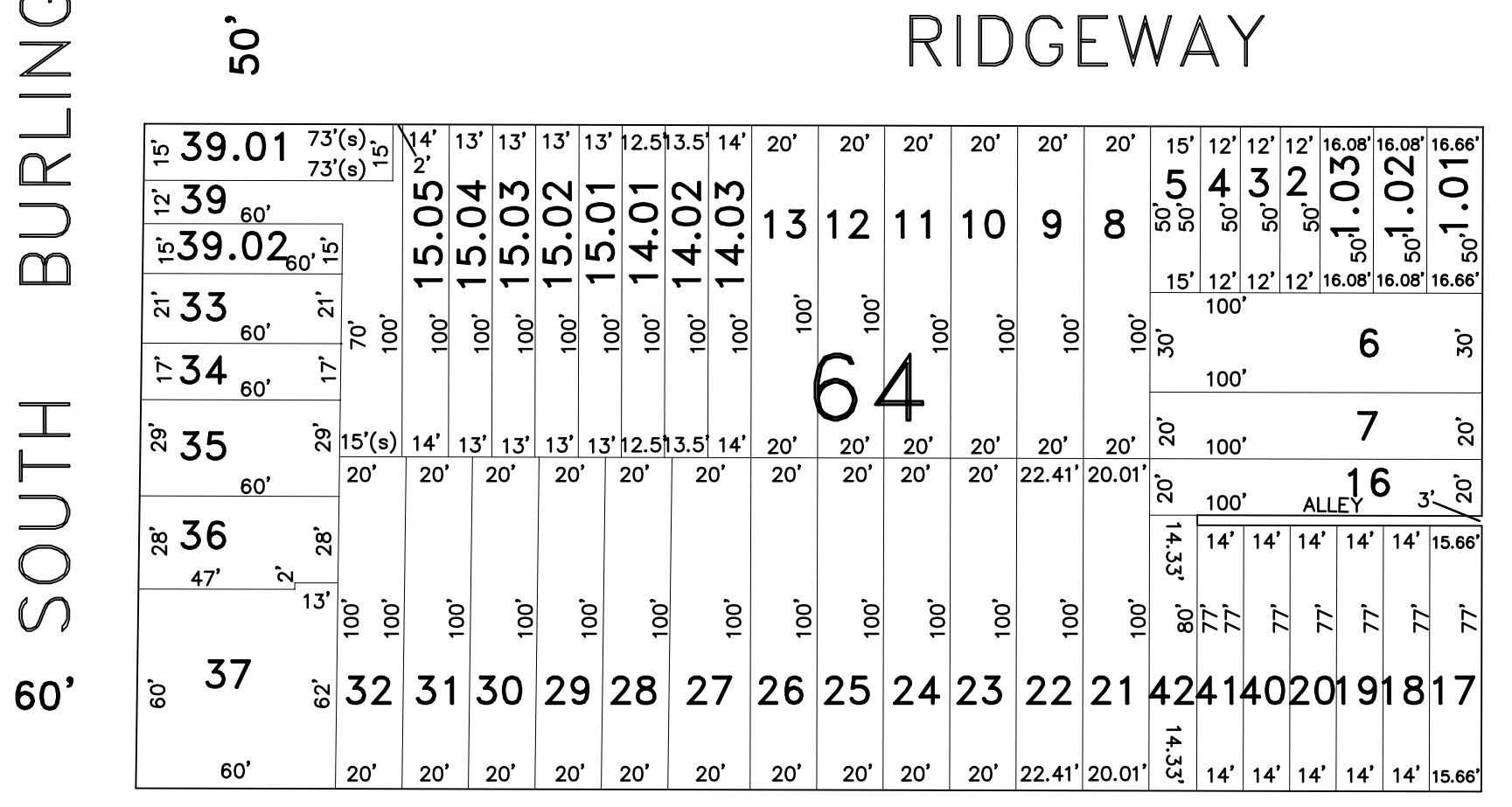
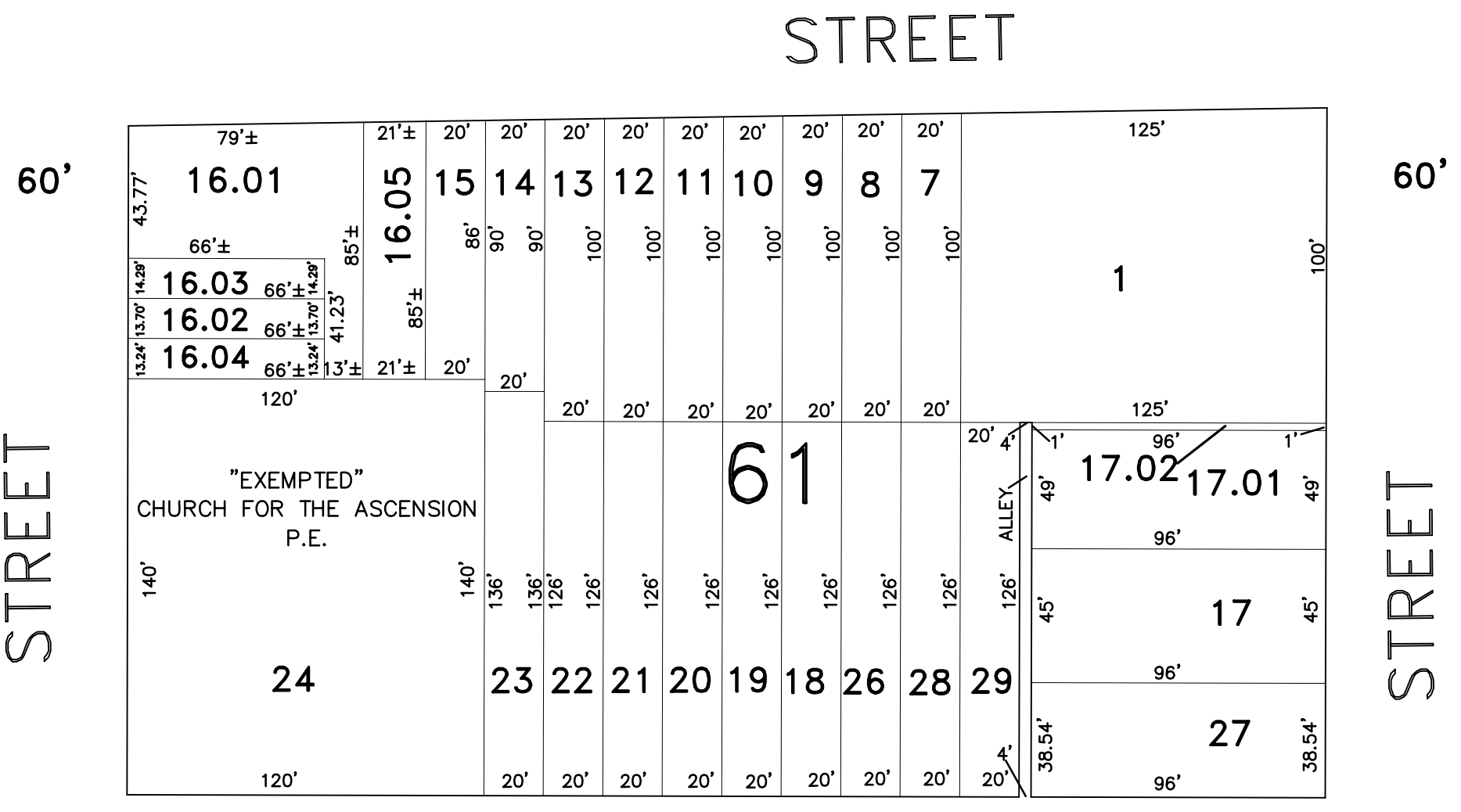
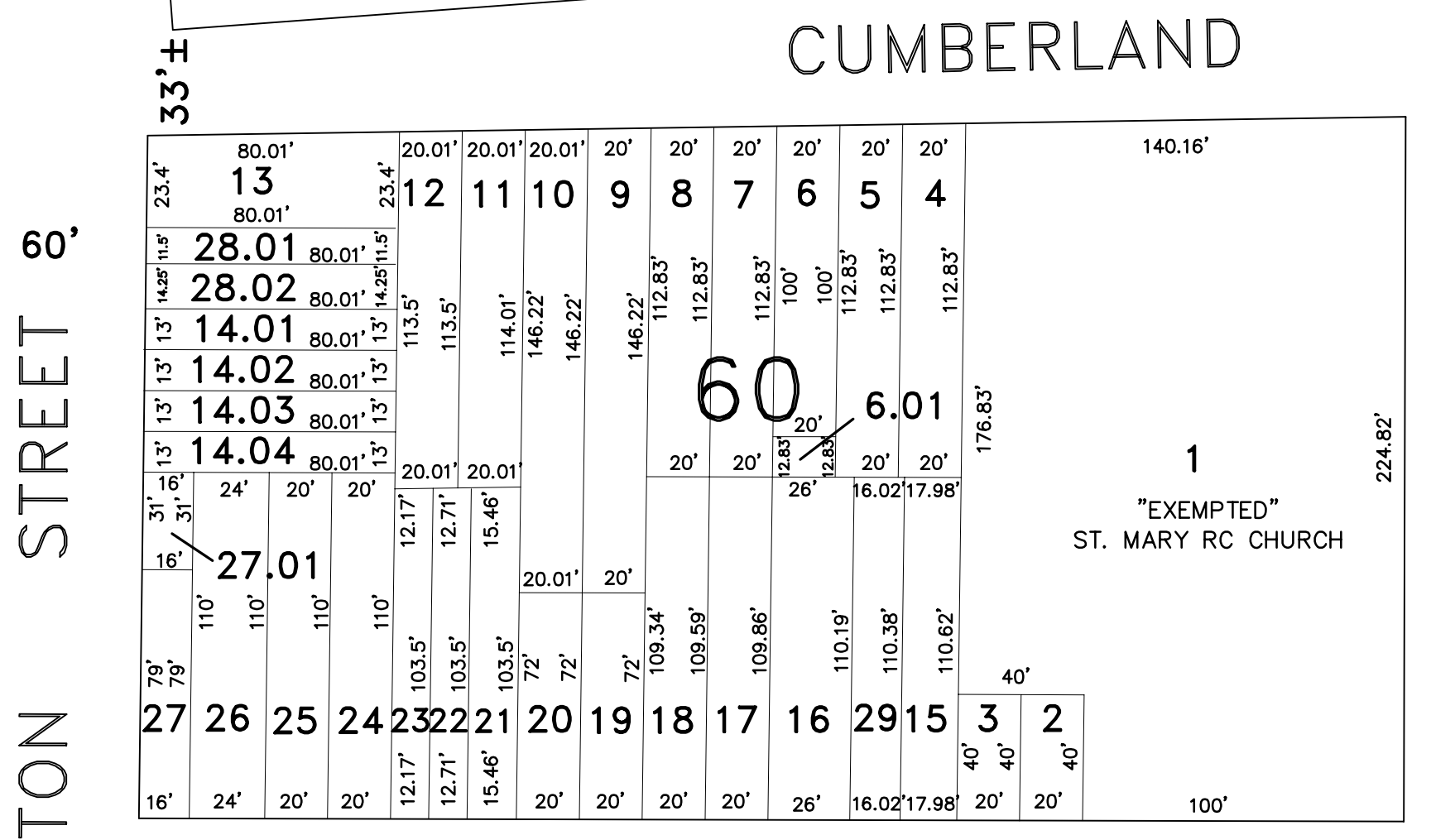
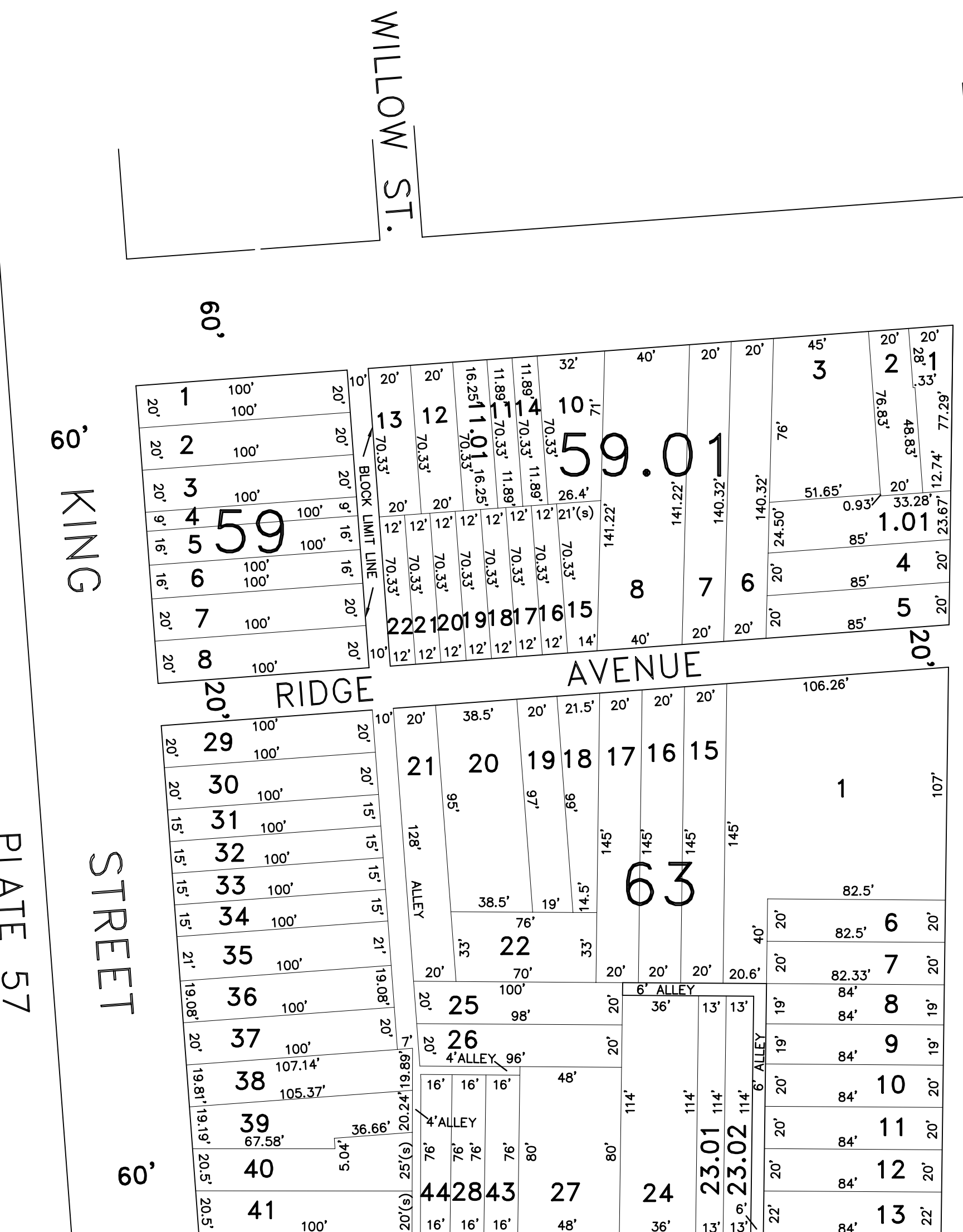


PLATE 10

THIRD STREET

FOURTH STREET

PLATE 11

FIFTH STREET

REVISED BY REMINGTON & VERNICK ENGINEERS - 5-1-2007

"THIS TAX MAP PLATE HAS BEEN DIGITALLY DRAWN USING COMPUTER-AIDED DRAFTING/DESIGN (CADD) AND COORDINATE GEOMETRY (COGO). IT IS BASED ON THE ORIGINAL DIGITALLY DRAWN TAX MAP PLATE BEARING THE OFFICIAL NEW JERSEY DIVISION OF TAXATION APPROVAL STAMP WITH APPROVAL DATE 3-24-1994, SERIAL NUMBER 759 AND SIGNATURE OF SIGNER IVAN HAFTKOWYCZ P.E., L.S. THIS TAX MAP PLATE HAS BEEN DIGITALLY UPDATED TO REFLECT CONDITIONS AS OF 5-1-2007. THE ORIGINAL DRAWN TAX MAP PLATE WITH THE OFFICIAL APPROVAL STAMP IS ON FILE WITH REMINGTON AND VERNICK ENGINEERS."

**TAX MAP**  
**CITY OF GLOUCESTER**

CAMDEN COUNTY NEW JERSEY  
SCALE: 1" = 50' DATE: 5-15-1992

CRAIG F. REMINGTON LAND SURVEYOR LIC. NO. 23924



REMINOTON & VERNICK ENGINEERS  
232 KING'S HIGHWAY EAST HADDONFIELD, N.J. 08033  
(856) 795-9595, FAX (856) 795-1882  
WEB SITE ADDRESS: WWW.RVCE.COM

PLATE 9