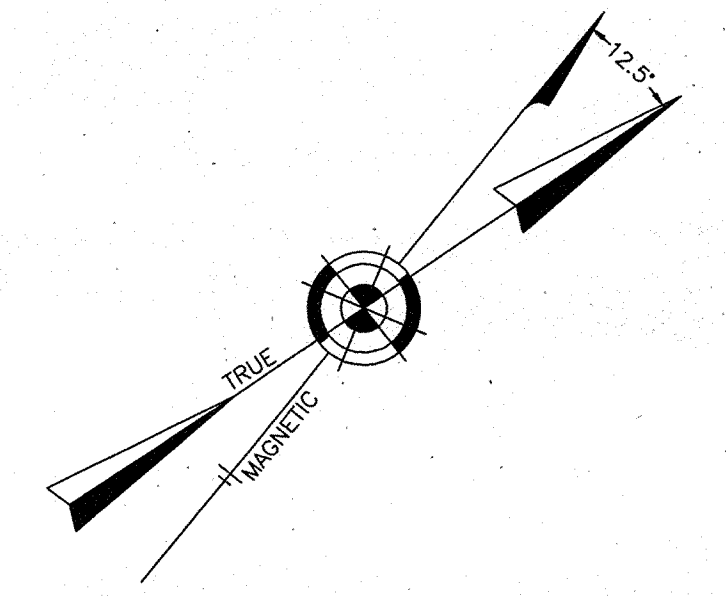


REVISIONS		
11-18-2004	CRAIG F. REMINGTON	23924
12-31-2011	CRAIG F. REMINGTON	23924
01-02-2013	CRAIG F. REMINGTON	23924

NOTE:
THIS SHEET HAS BEEN DRAWN USING COMPUTER AIDED DRAFTING/DESIGN (CAD/D) AND COORDINATE GEOMETRY (COGO).



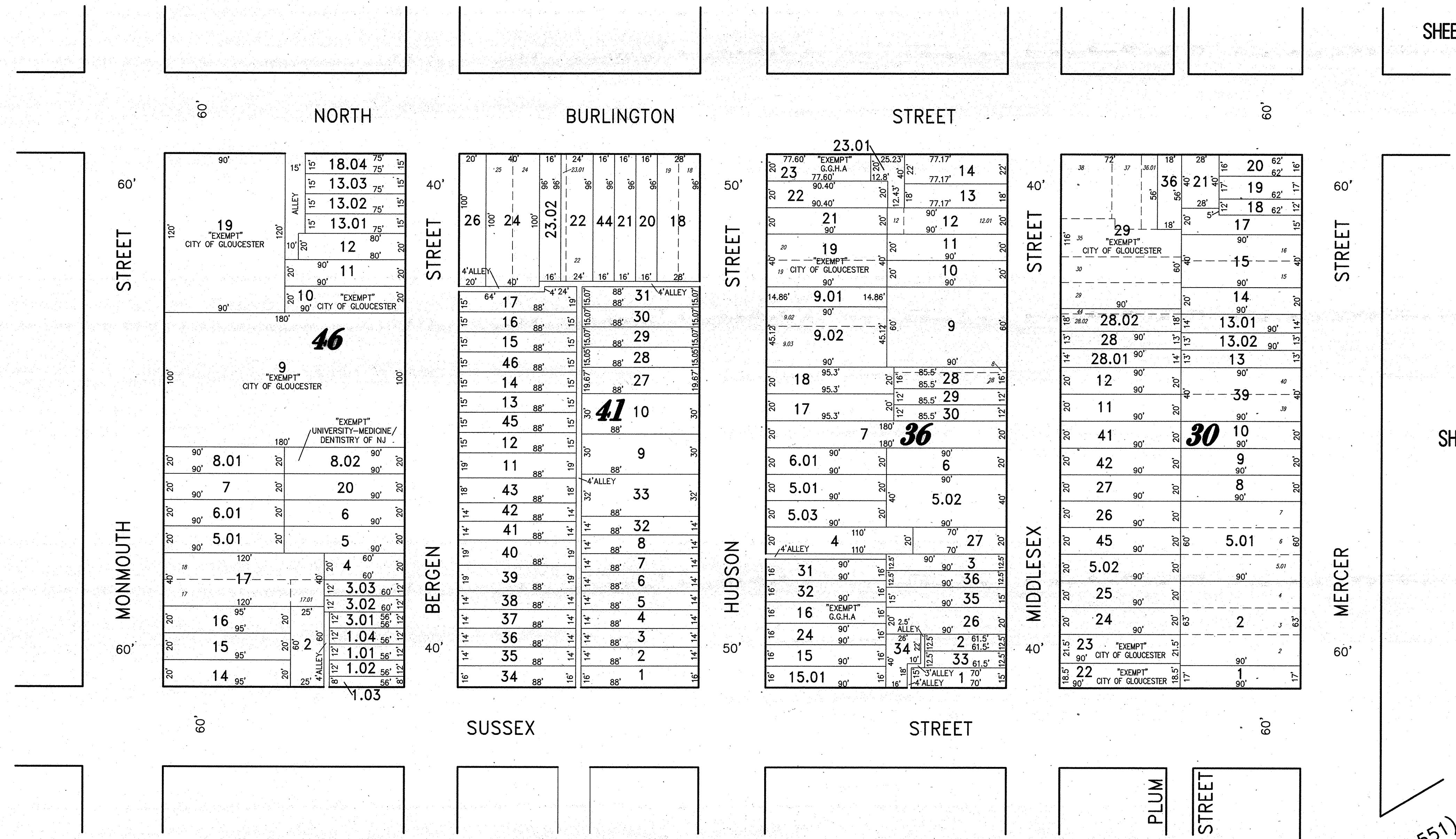
SHEET 4

SHEET 2

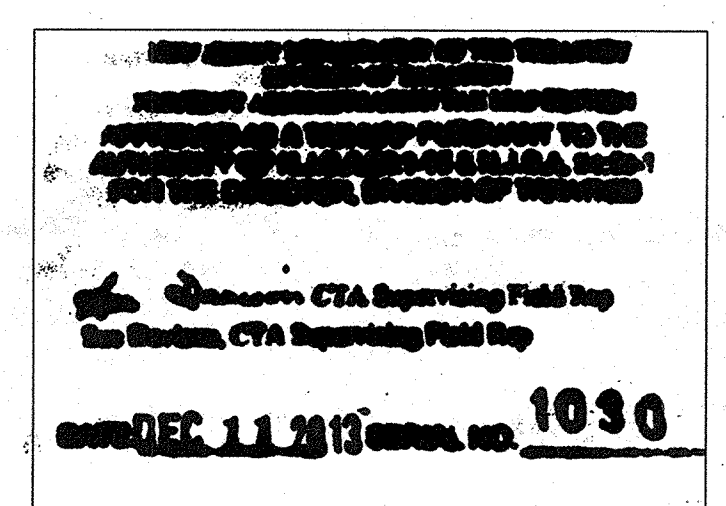
SHEET 7

SHEET 3

SHEET 6



BROADWAY (C.R. 551)



TAX MAP
CITY OF GLOUCESTER
CAMDEN COUNTY NEW JERSEY

SCALE: 1" = 50' DATE: 5-15-1992

CRAIG F. REMINGTON LAND SURVEYOR LIC. NO. 23924



REMINGTON & VERNICK ENGINEERS
232 KING'S HIGHWAY EAST HADDONFIELD, N.J. 08033
(856) 795-9695, FAX (856) 795-1692
WEB SITE ADDRESS: WWW.RVE.COM

TO SHOW CONDITIONS AS OF 06-18-2013