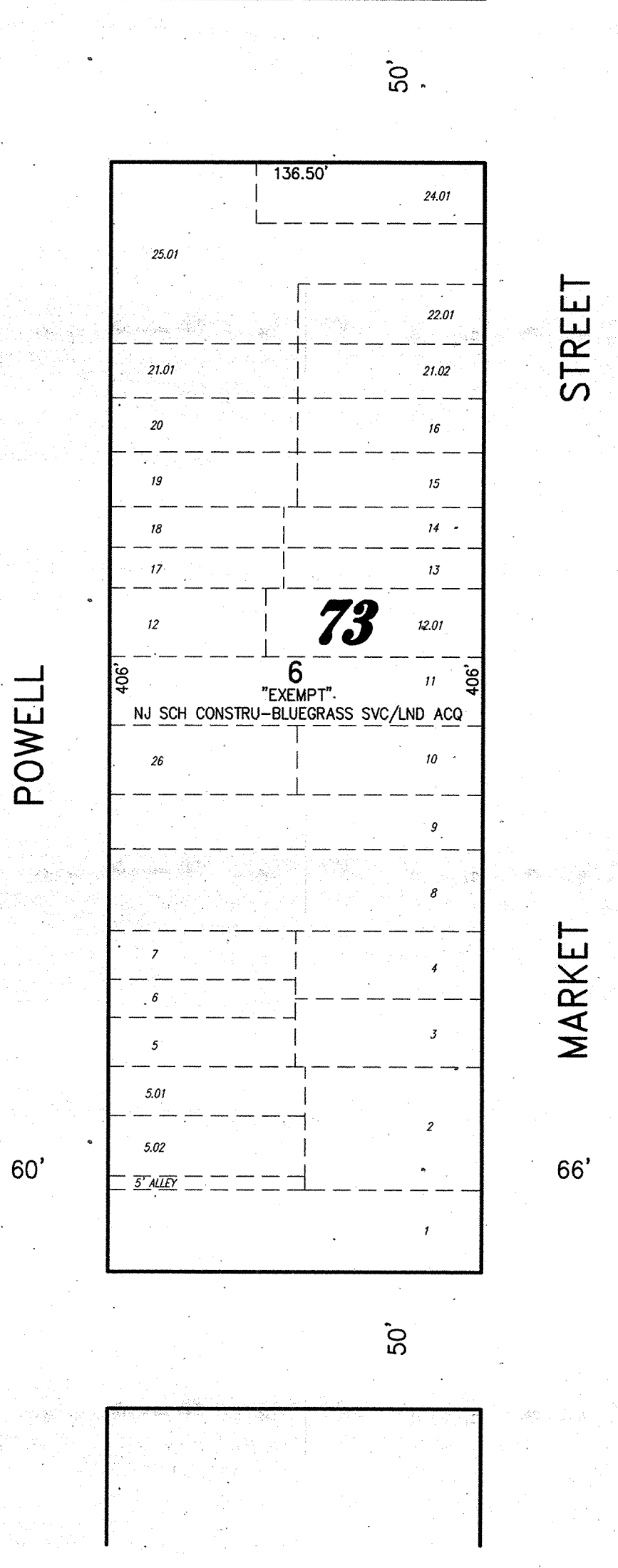
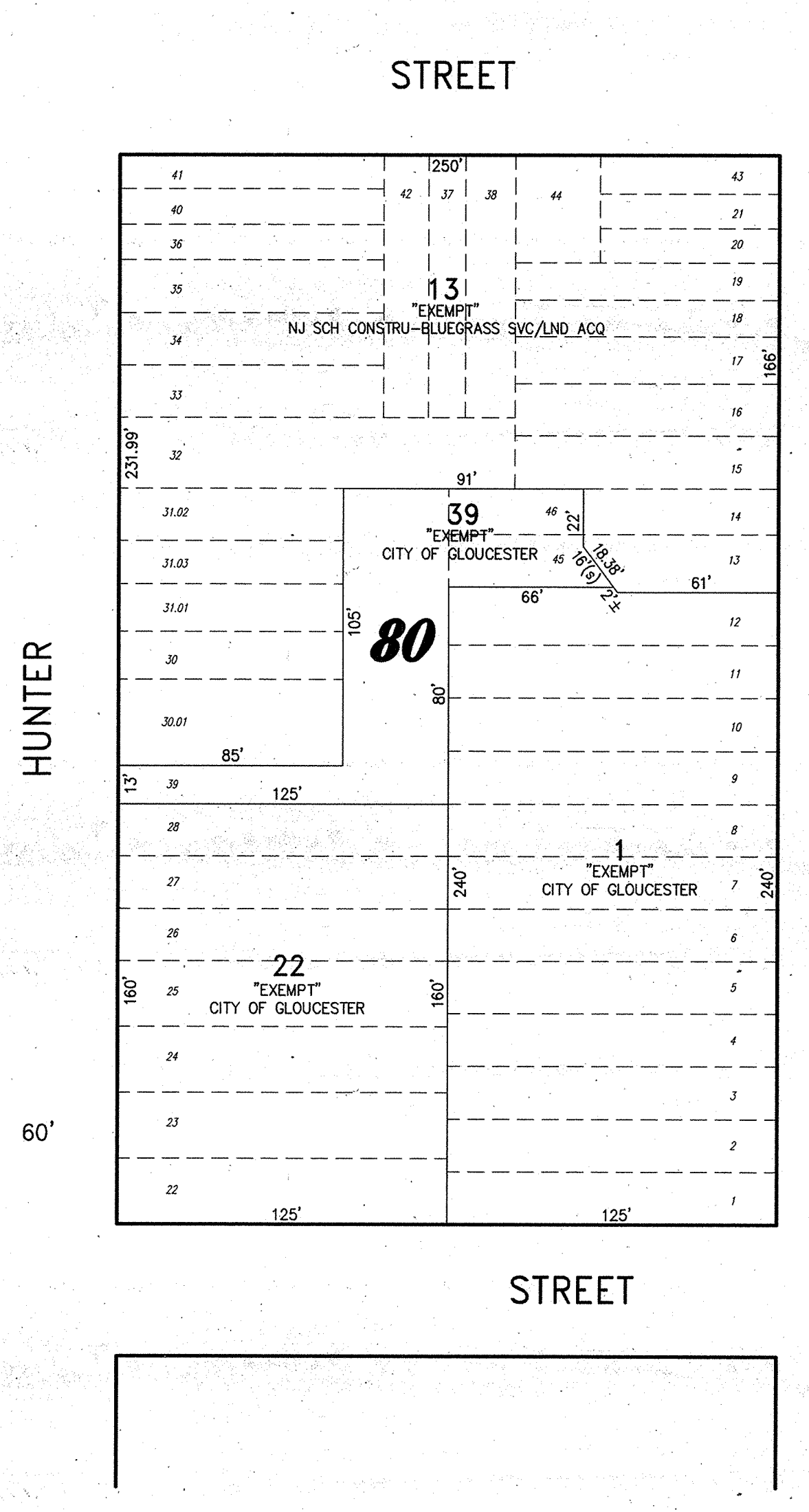
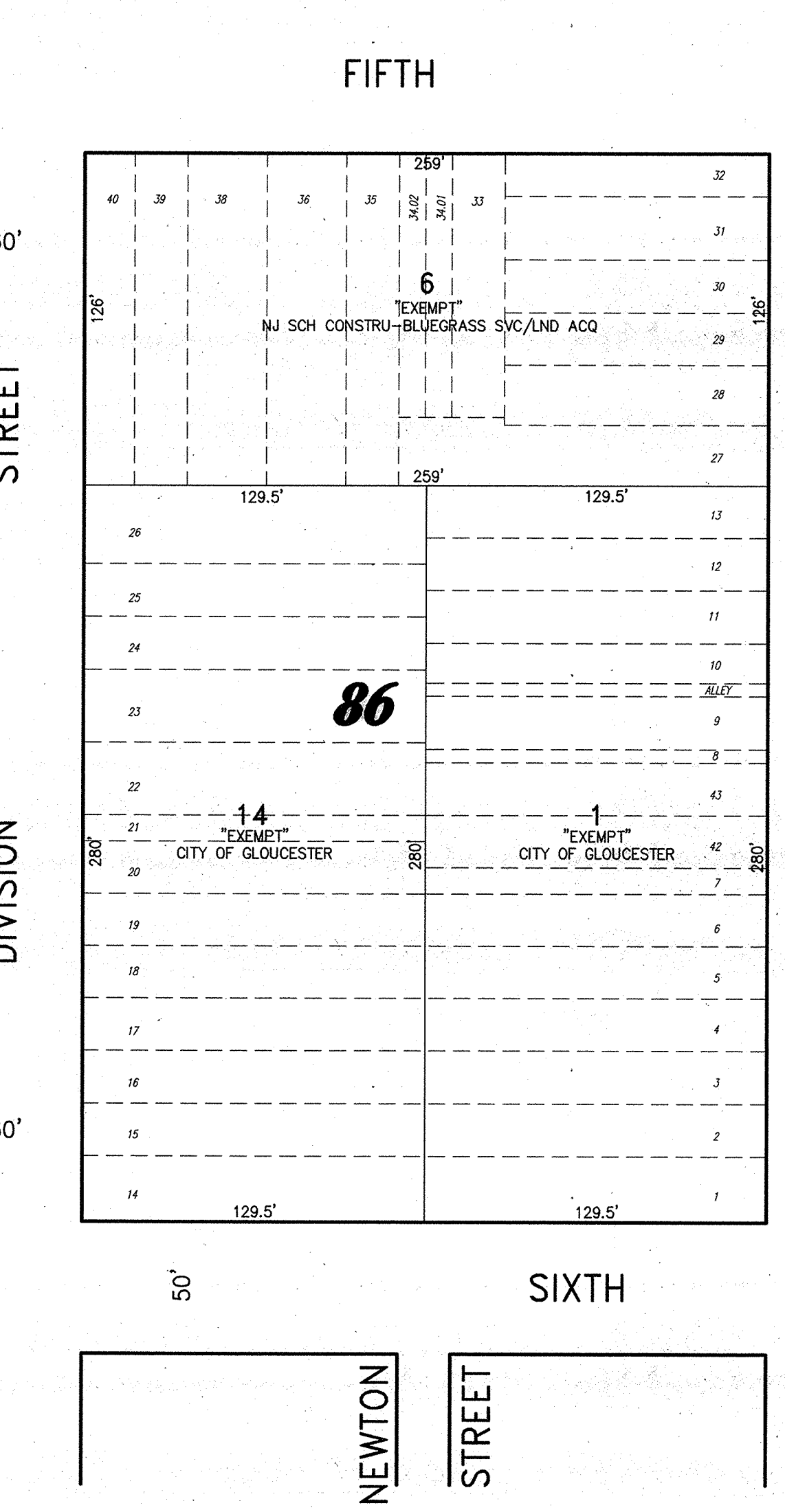
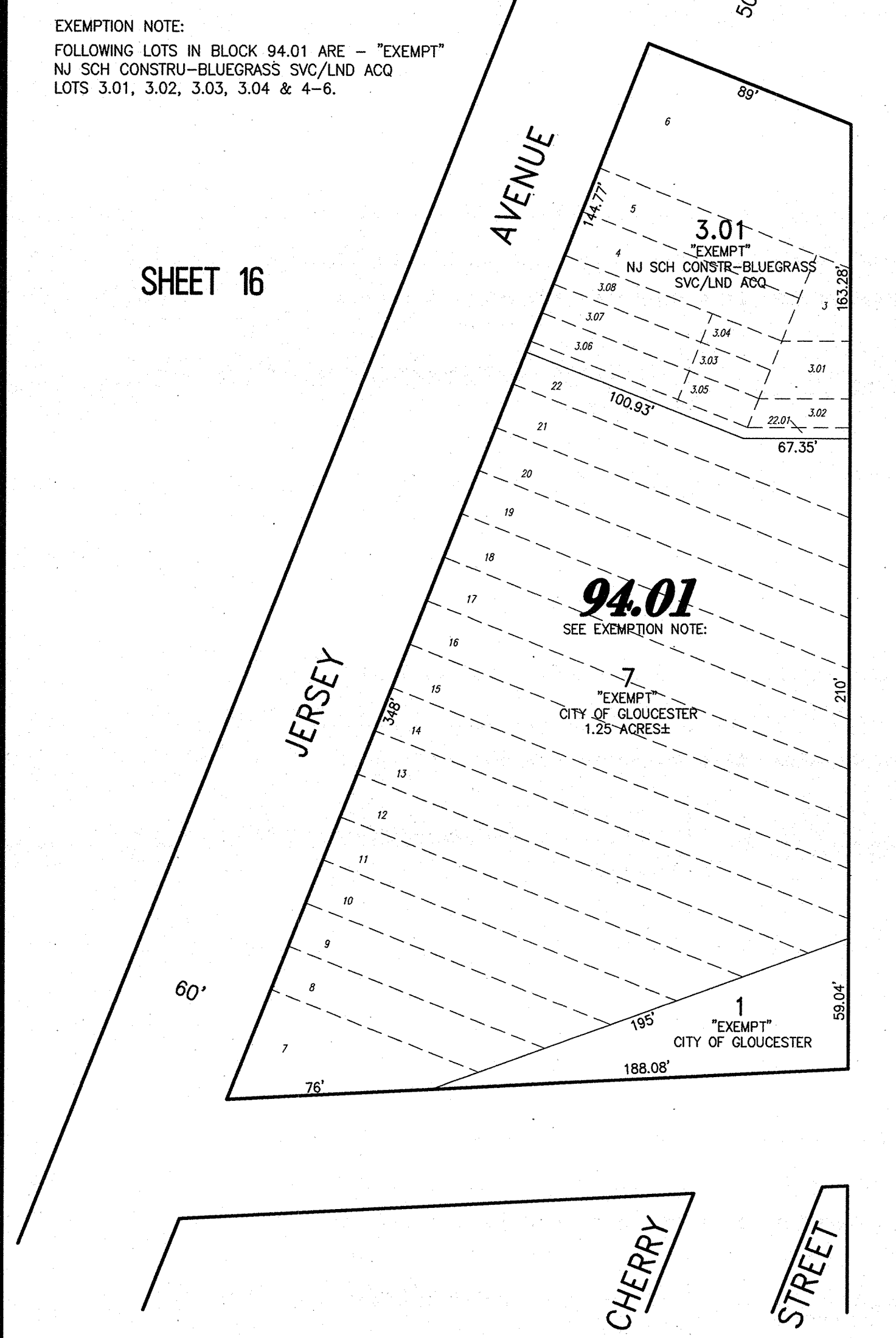
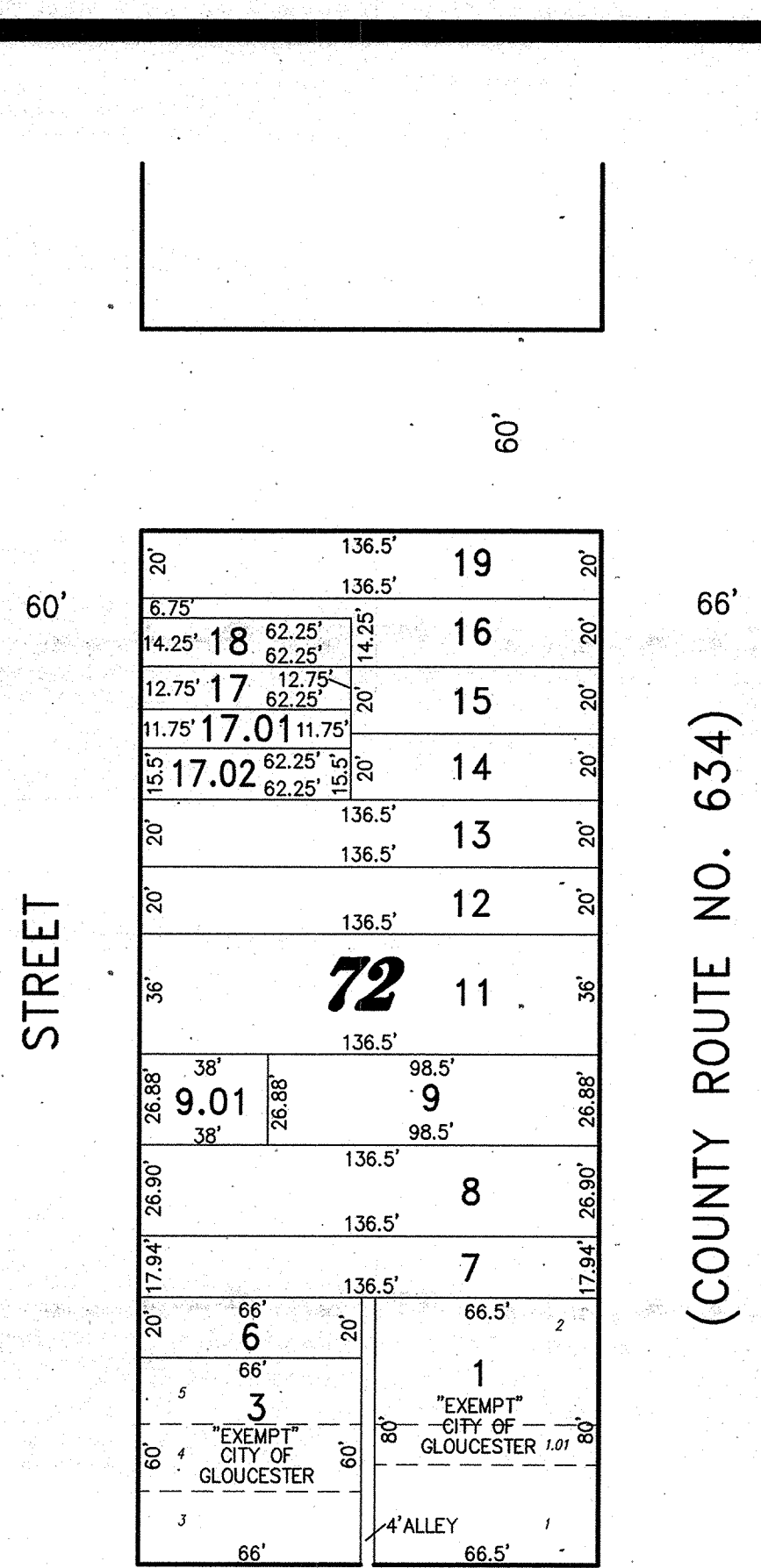
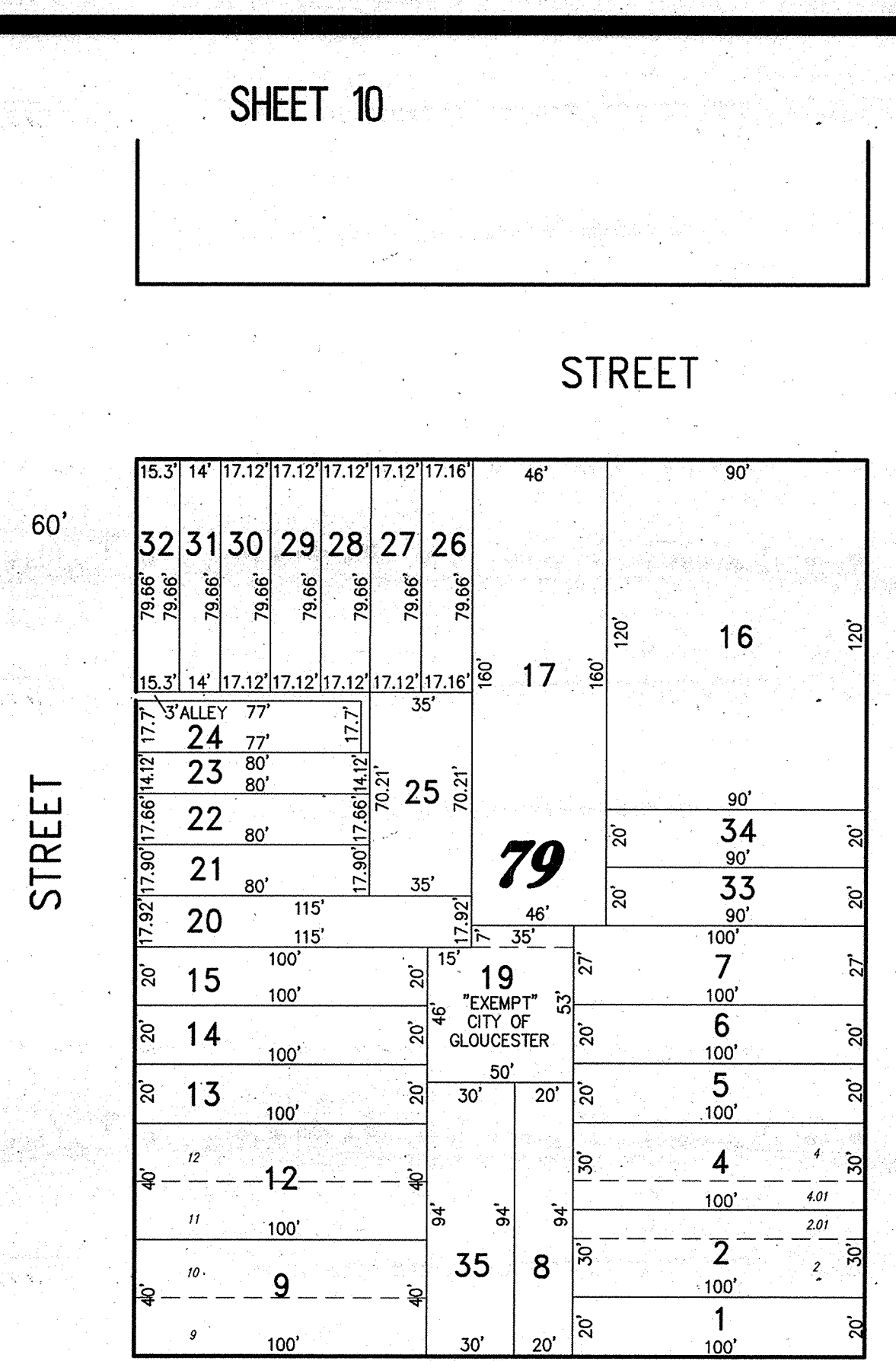
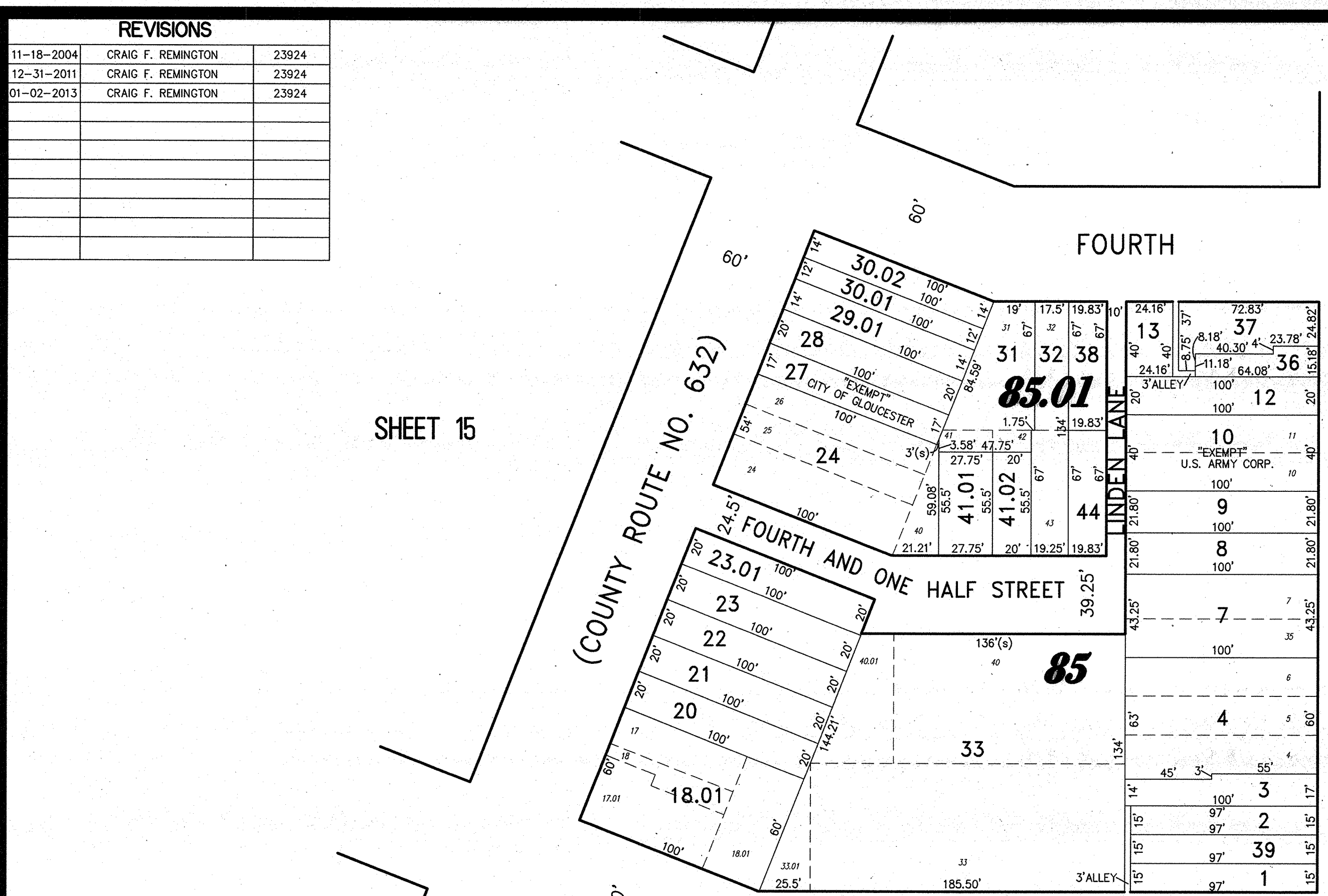
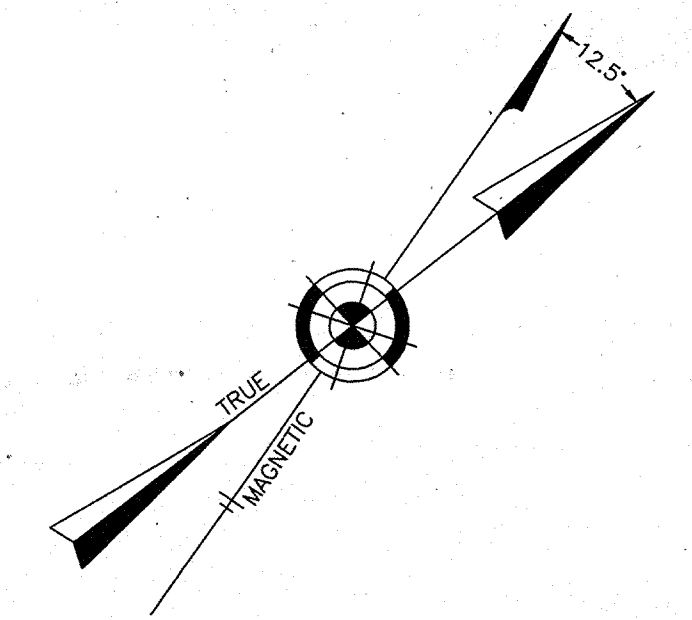


REVISIONS		
11-18-2004	CRAIG F. REMINGTON	23924
12-31-2011	CRAIG F. REMINGTON	23924
01-02-2013	CRAIG F. REMINGTON	23924

NOTE:
THIS SHEET HAS BEEN DRAWN USING COMPUTER AIDED DRAFTING/DESIGN (CAD/D) AND COORDINATE GEOMETRY (COGO).



SHEET 8

SHEET 9

THIS MAP IS A REPRESENTATION OF THE TAX MAP AS OF THE DATE SHOWN AND IS NOT TO BE USED AS A BASIS FOR ANY OTHER PURPOSES. THE CITY OF GLOUCESTER IS NOT RESPONSIBLE FOR ANY ERRORS OR OMISSIONS. FOR THE RECORD, SHOWN OF TOWNHIP.

Craig F. Remington
24 GA 28003800
23924

DATE: DEC 11 2011

TAX MAP
CITY OF GLOUCESTER

CAMDEN COUNTY NEW JERSEY
SCALE: 1" = 50' DATE: 5-15-1992

CRAIG F. REMINGTON LAND SURVEYOR LIC. NO. 23924



REMINGTON & VERNICK ENGINEERS
232 KING'S HIGHWAY EAST HADDONFIELD, N.J. 08033
(856) 795-9595, FAX (856) 795-1882
WEB SITE ADDRESS: WWW.RVE.COM

TO SHOW CONDITIONS AS OF 06-18-2013

SHEET 12