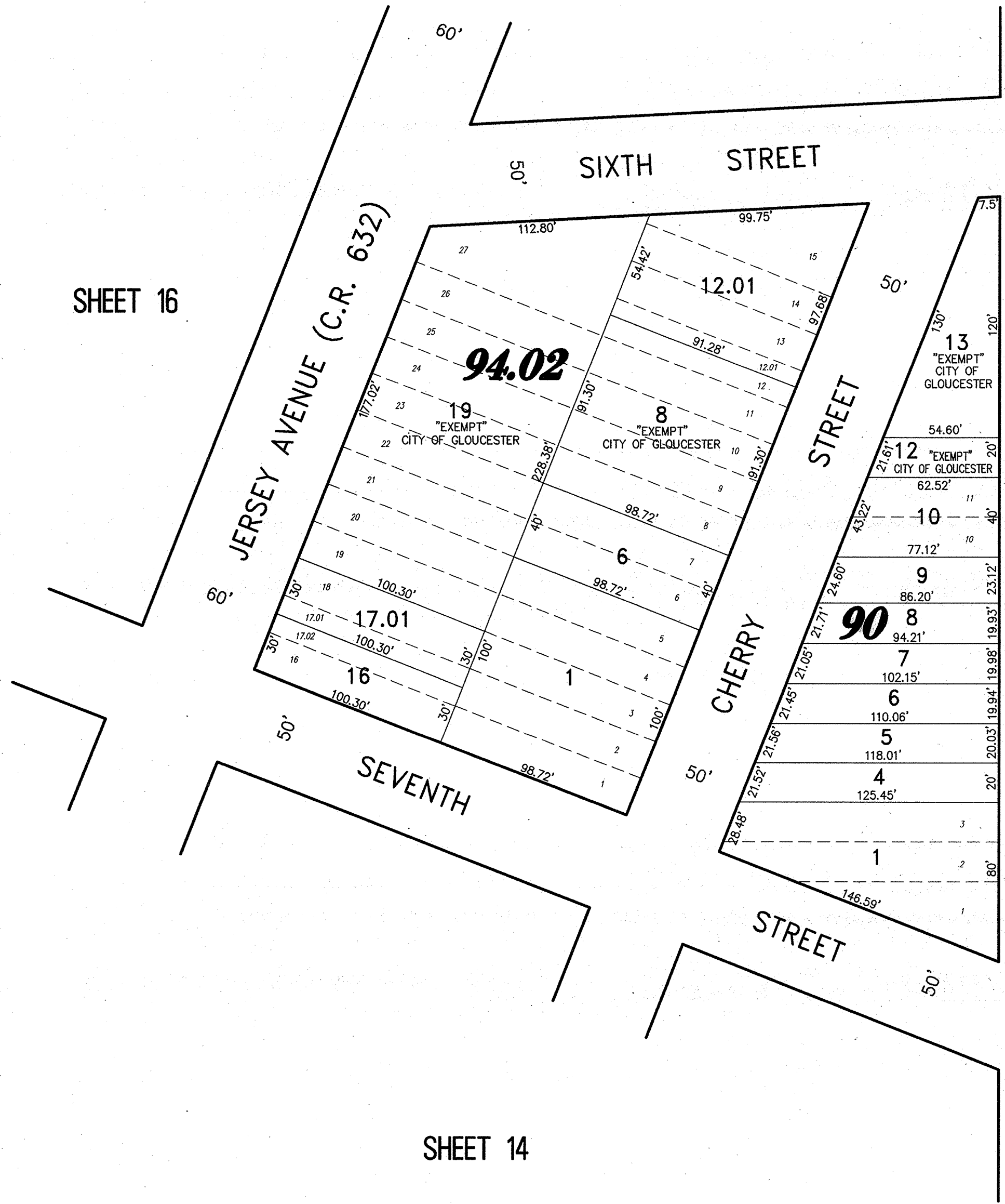


REVISIONS		
11-18-2004	CRAIG F. REMINGTON	23924
12-31-2011	CRAIG F. REMINGTON	23924
01-02-2013	CRAIG F. REMINGTON	23924

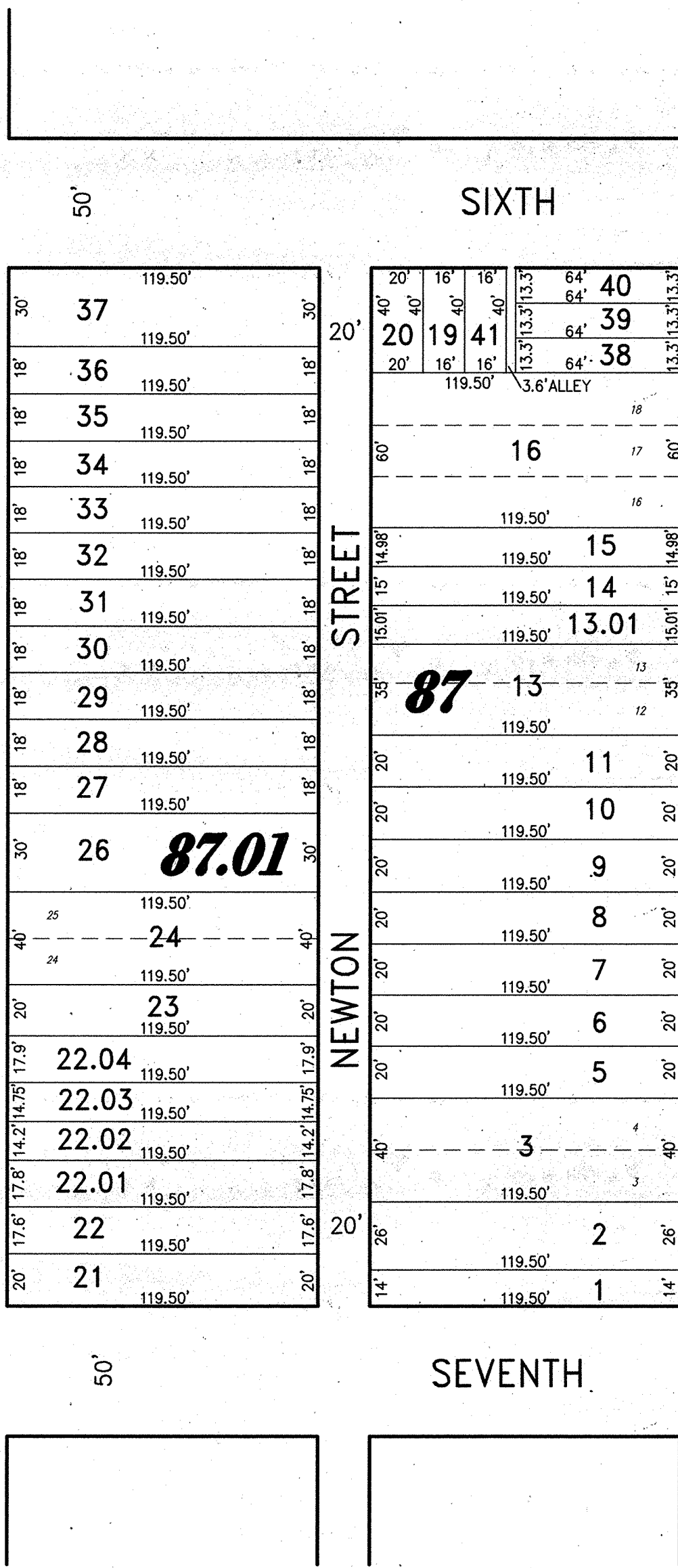
NOTE:
THIS SHEET HAS BEEN DRAWN USING COMPUTER AIDED DRAFTING/DESIGN (CAD/D) AND COORDINATE GEOMETRY (COGO).

SHEET 11

SHEET 16

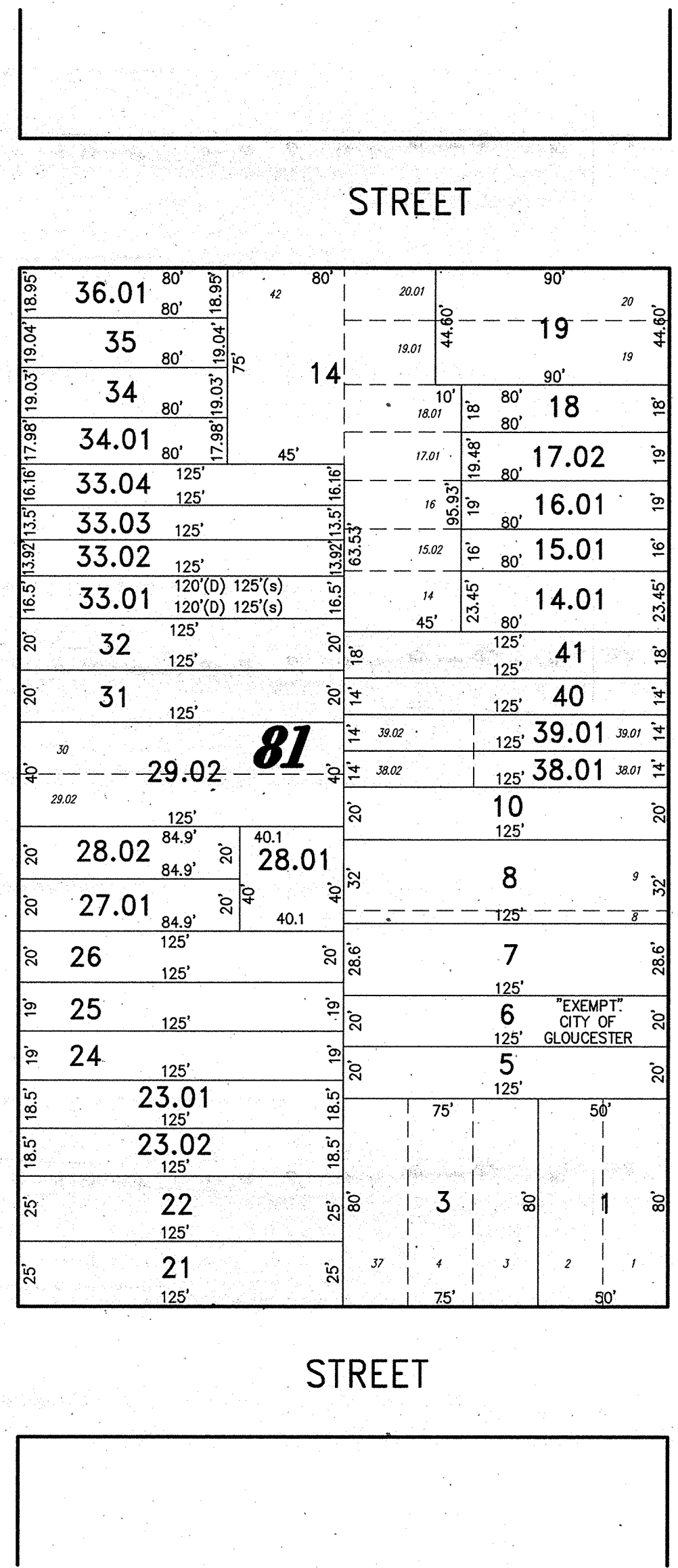


SHEET 14



50'

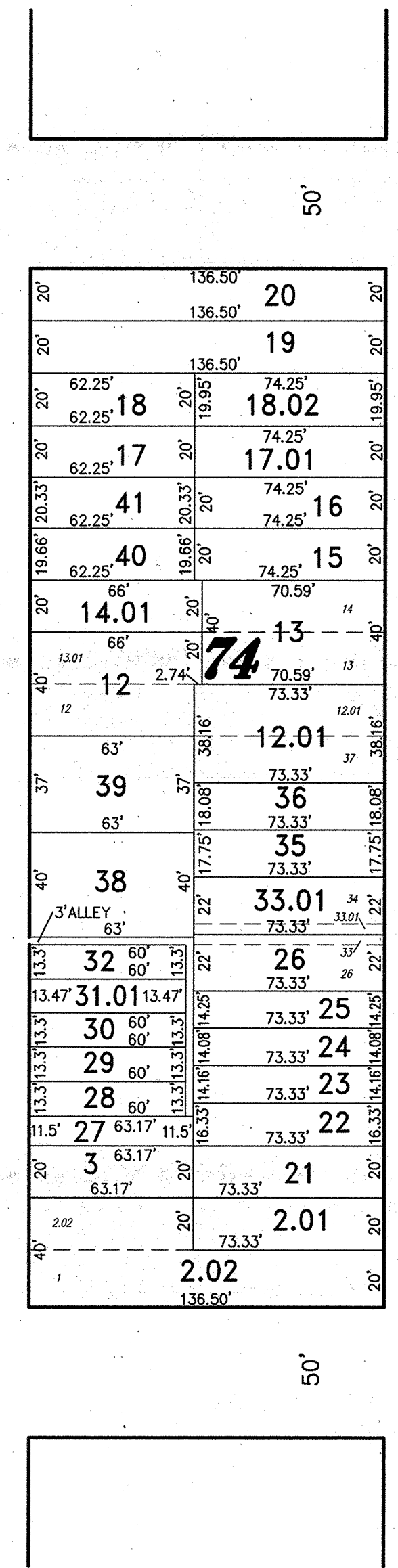
SEVENTH STREET



HUNTER STREET

STREET

SHEET 13



POWELL STREET

MARKET STREET (C.R. 634)

JOY STREET

SHEET 9

NEW JERSEY DEPARTMENT OF THE TREASURY
DIVISION OF TAXATION
PROPERTY ADMINISTRATION TAX MAP SECTION
APPROVED AS A TAX MAP PURSUANT TO THE
AUTHORITY OF N.J.S.A. 54:1-15 & N.J.S.A. 54:50-1
FOR THE DIRECTOR, DIVISION OF TAXATION

Sue Devison, CTA Supervising Field Rep
Sue Devison, CTA Supervising Field Rep

DATE: DEC 11 2013 SERIAL NO. 1030

TAX MAP
CITY OF GLOUCESTER
CAMDEN COUNTY NEW JERSEY
SCALE: 1" = 50' DATE: 5-15-1992
CRAIG F. REMINGTON LAND SURVEYOR LIC. NO. 23924
24 GA 28003800
REMINGTON & VERNICK ENGINEERS
232 KING'S HIGHWAY EAST, HADDONFIELD, N.J. 08033
(856) 795-9555, FAX (856) 795-4982
WEB SITE ADDRESS: WWW.RVE.COM
TO SHOW CONDITIONS AS OF 06-18-2013