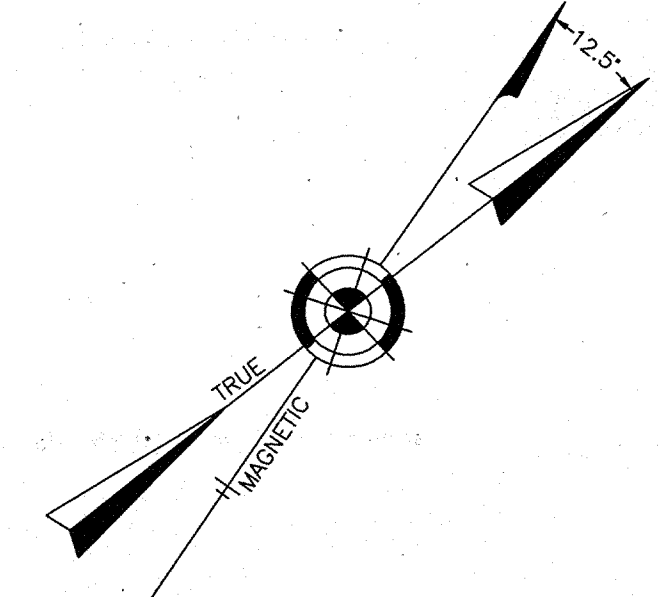


REVISIONS		
10-13-2011	CRAIG F. REMINGTON	23924
12-31-2011	CRAIG F. REMINGTON	23924
01-02-2013	CRAIG F. REMINGTON	23924

NOTE:  
THIS SHEET HAS BEEN DRAWN USING COMPUTER AIDED DRAFTING/DESIGN (CAD/D) AND COORDINATE GEOMETRY (COGO).



SEVENTH ST.

SHEET 12

66'

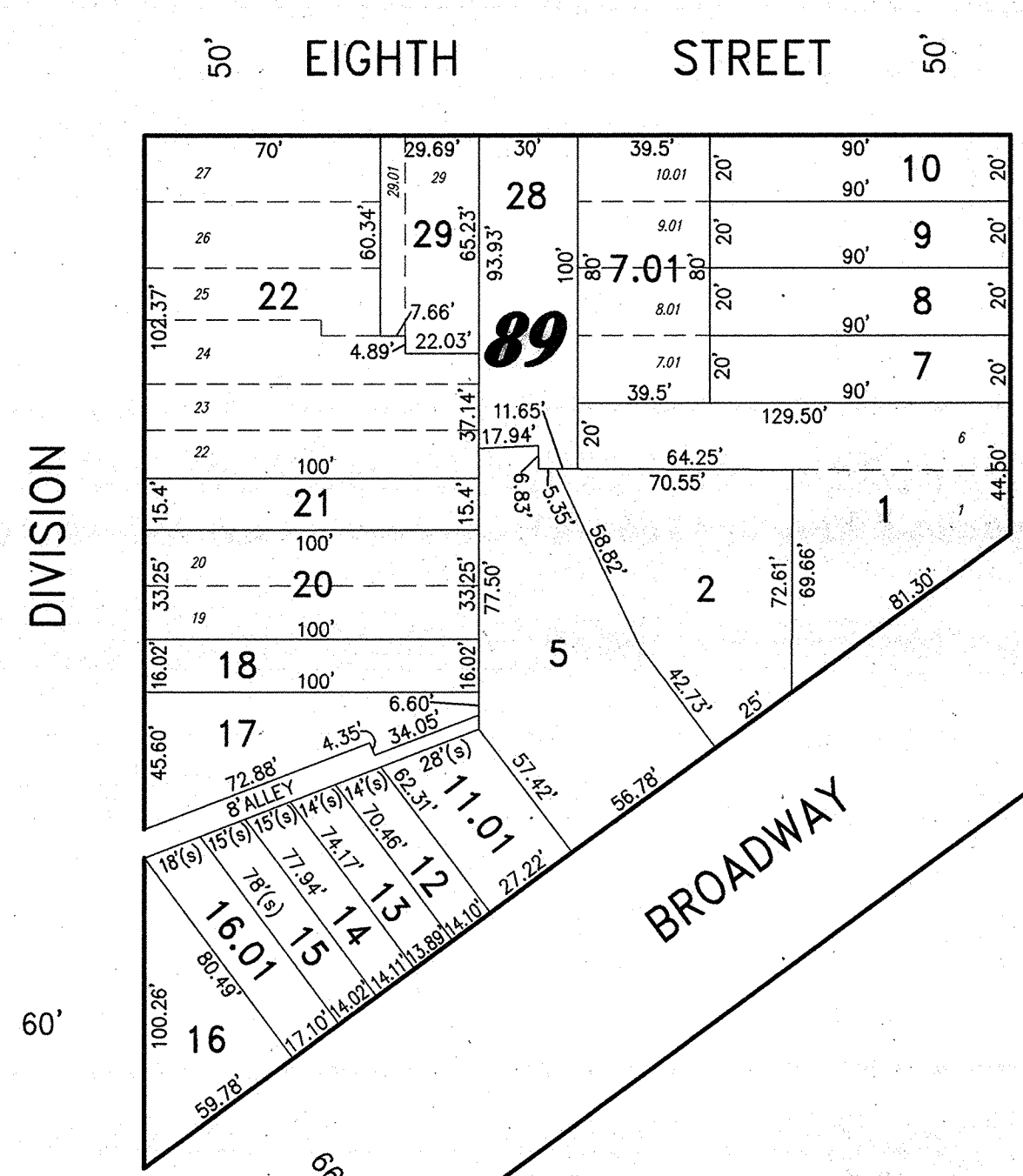


SHEET 9

SHEET 14

SHEET 25

EIGHTH ST.



HUNTER STREET

POWELL STREET

(COUNTY ROUTE NO. 551)

SHEET 29

NEW JERSEY DEPARTMENT OF THE TREASURY  
DIVISION OF TAXATION  
PROPERTY ADMINISTRATION TAX MAP SECTION  
APPROVED AS A TAX MAP PURSUANT TO THE  
AUTHORITY OF N.J.S.A. 54:1-18 & N.J.S.A. 54:30-4  
FOR THE DIRECTOR, DIVISION OF TAXATION

*Sue Dawson* CTA Supervising Field Rep  
Sue Dawson, CTA Supervising Field Rep

DATE: \_\_\_\_\_ SERIAL NO. 1030

**TAX MAP**  
**CITY OF GLOUCESTER**  
CAMDEN COUNTY NEW JERSEY  
SCALE: 1" = 50' DATE: 5-15-1992

**CRAIG F. REMINGTON LAND SURVEYOR LIC. NO. 23924**

**REMINGTON & VERNICK ENGINEERS**  
232 KING'S HIGHWAY EAST HADDONFIELD, N.J. 08033  
(856) 795-9595 FAX (856) 795-1682  
WEB SITE ADDRESS: WWW.RVE.COM

TO SHOW CONDITIONS AS OF 06-18-2013