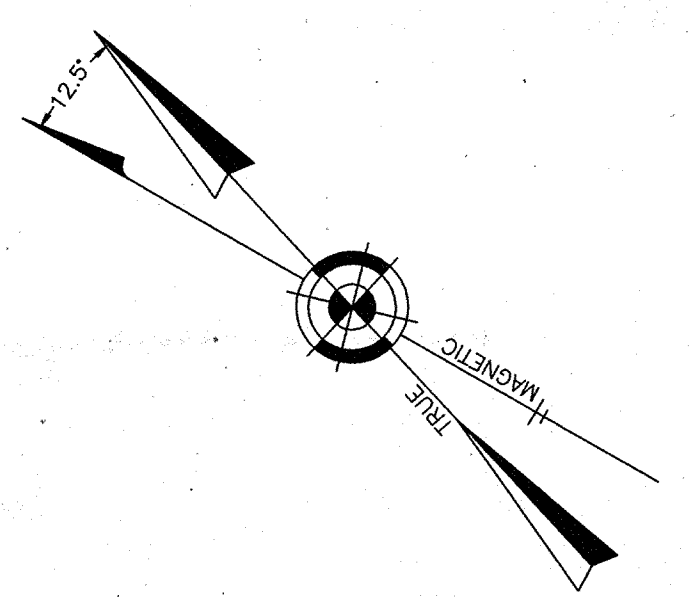


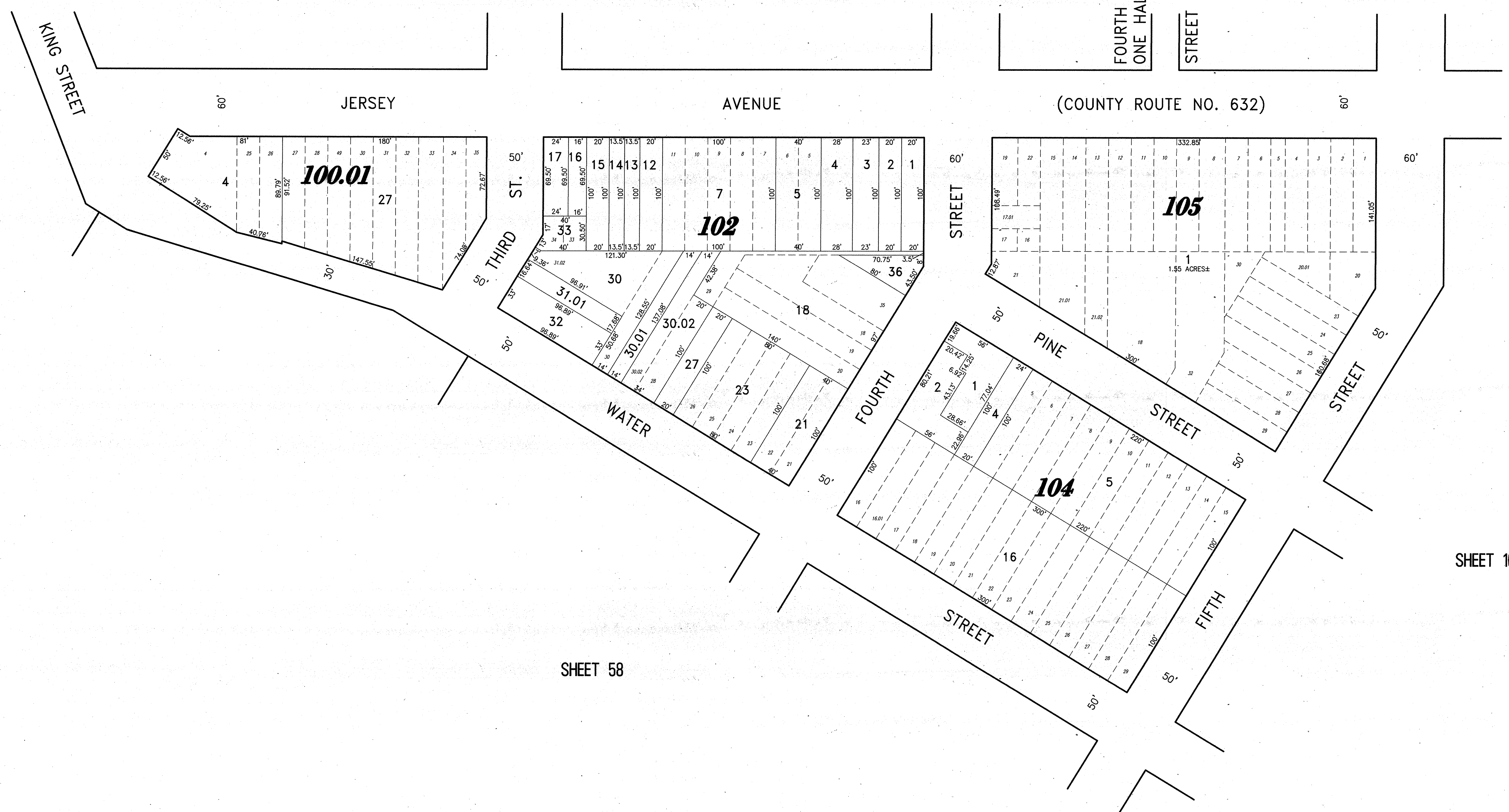
REVISIONS		
11-18-2004	CRAIG F. REMINGTON	23924
01-02-2013	CRAIG F. REMINGTON	23924

NOTE:
THIS SHEET HAS BEEN DRAWN USING COMPUTER AIDED DRAFTING/DESIGN (CAD/D) AND COORDINATE GEOMETRY (COGO).



SHEET 10

SHEET 11



(COUNTY ROUTE NO. 632)

SHEET 58

SHEET 16

NEW JERSEY DEPARTMENT OF THE TREASURY
DIVISION OF TAXATION
PROPERTY ADMINISTRATION TAX MAP SECTION
APPROVED AS A TAX MAP PURSUANT TO THE
AUTHORITY OF N.J.S.A. 54:1-15 & N.J.S.A. 54:50-1
FOR THE DIRECTOR, DIVISION OF TAXATION

Craig F. Remington CTA Supervising Field Rep
Bue Davison, CTA Supervising Field Rep

DATE: DEC 11 2013 SERIAL NO. 1030

TAX MAP
CITY OF GLOUCESTER
CAMDEN COUNTY NEW JERSEY

SCALE: 1" = 50' DATE: 5-15-1992

CRAIG F. REMINGTON LAND SURVEYOR LIC. NO. 23924



REMINGTON & VERNICK ENGINEERS
232 KING'S HIGHWAY EAST, HADDONFIELD, N.J. 08033
(856) 795-9555, FAX (856) 795-1892
WEB SITE ADDRESS: WWW.RVE.COM

TO SHOW CONDITIONS AS OF 06-18-2013