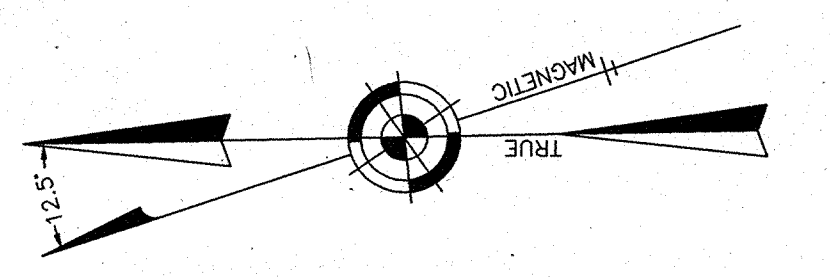
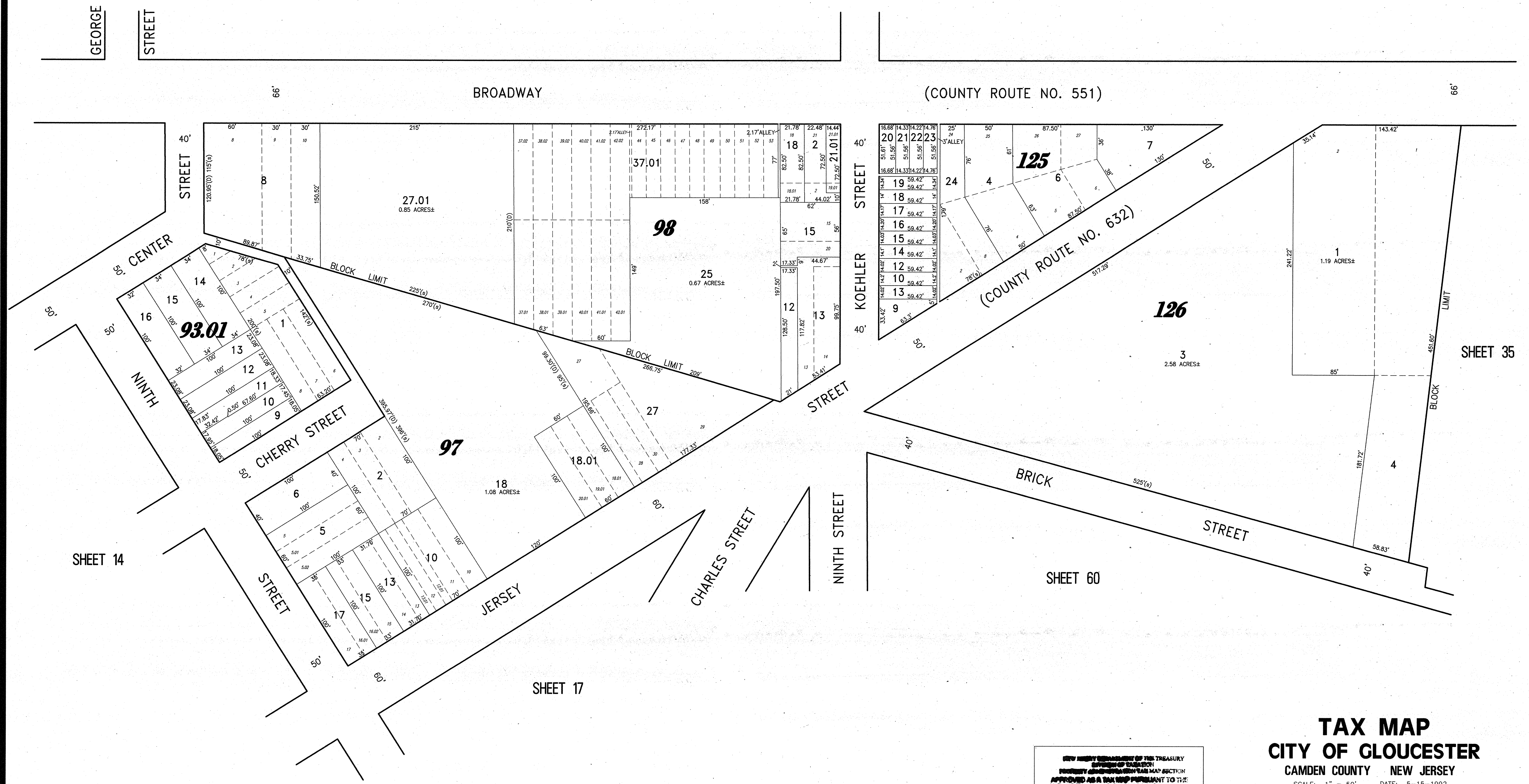


REVISIONS		
10-13-2011	CRAIG F. REMINGTON	23924
01-02-2013	CRAIG F. REMINGTON	23924

**NOTE:**  
THIS SHEET HAS BEEN DRAWN USING COMPUTER AIDED DRAFTING/DESIGN (CAD/D) AND COORDINATE GEOMETRY (COGO).



SHEET 31



NEW INSTRUMENTS OF THE TREASURY  
OFFICE OF TAXATION  
PROPERTY AND TAXATION MAP SECTION  
APPROVED AS A TAX MAP PURSUANT TO THE  
AUTHORITY OF N.J.S.A. 54:26-6 & N.J.S.A. 54:26-7  
FOR THE DIRECTOR, OFFICE OF TAXATION

Craig F. Remington, CTA Registering Field Rep  
Dan Bunker, CTA Registering Field Rep

DATE: **DEC 11 2013** 10:30

**TAX MAP**  
**CITY OF GLOUCESTER**  
CAMDEN COUNTY NEW JERSEY  
SCALE: 1" = 50' DATE: 5-15-1992  
CRAIG F. REMINGTON LAND SURVEYOR LIC. NO. 23924  
REMINGTON & VERNICK ENGINEERS  
232 KING'S HIGHWAY EAST HADDONFIELD, N.J. 08033  
(856) 795-9595, FAX (856) 795-1882  
WEB SITE ADDRESS: WWW.RVE.COM  
TO SHOW CONDITIONS AS OF 06-18-2013