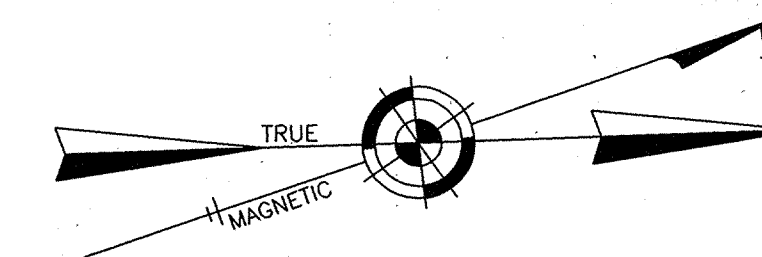


REVISIONS		
11-18-2004	CRAIG F. REMINGTON	23924
12-31-2011	CRAIG F. REMINGTON	23924
01-02-2013	CRAIG F. REMINGTON	23924

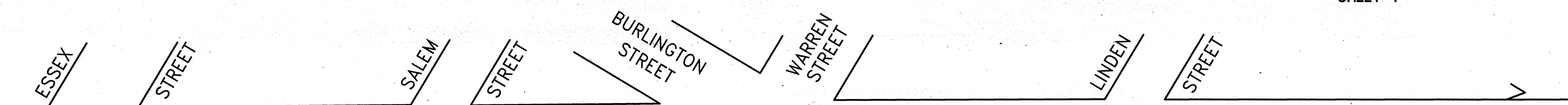
NOTE:  
 THIS SHEET HAS BEEN DRAWN USING COMPUTER AIDED DRAFTING/DESIGN  
 (CAD/D) AND COORDINATE GEOMETRY (COGO).



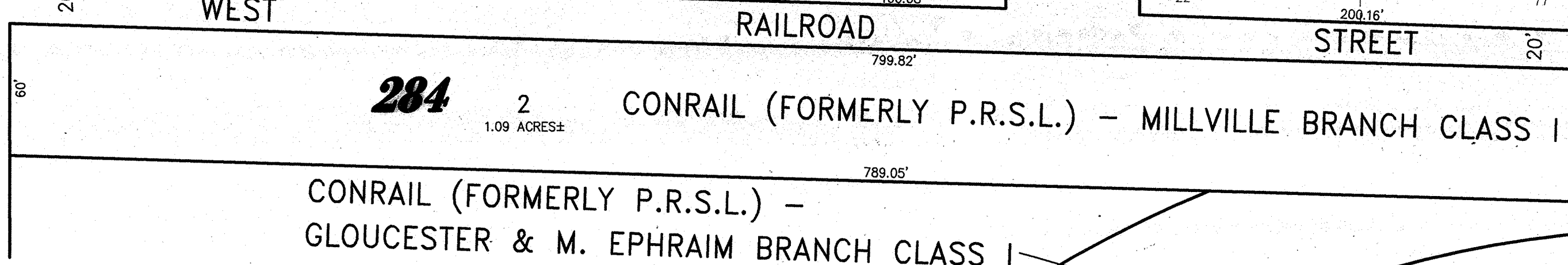
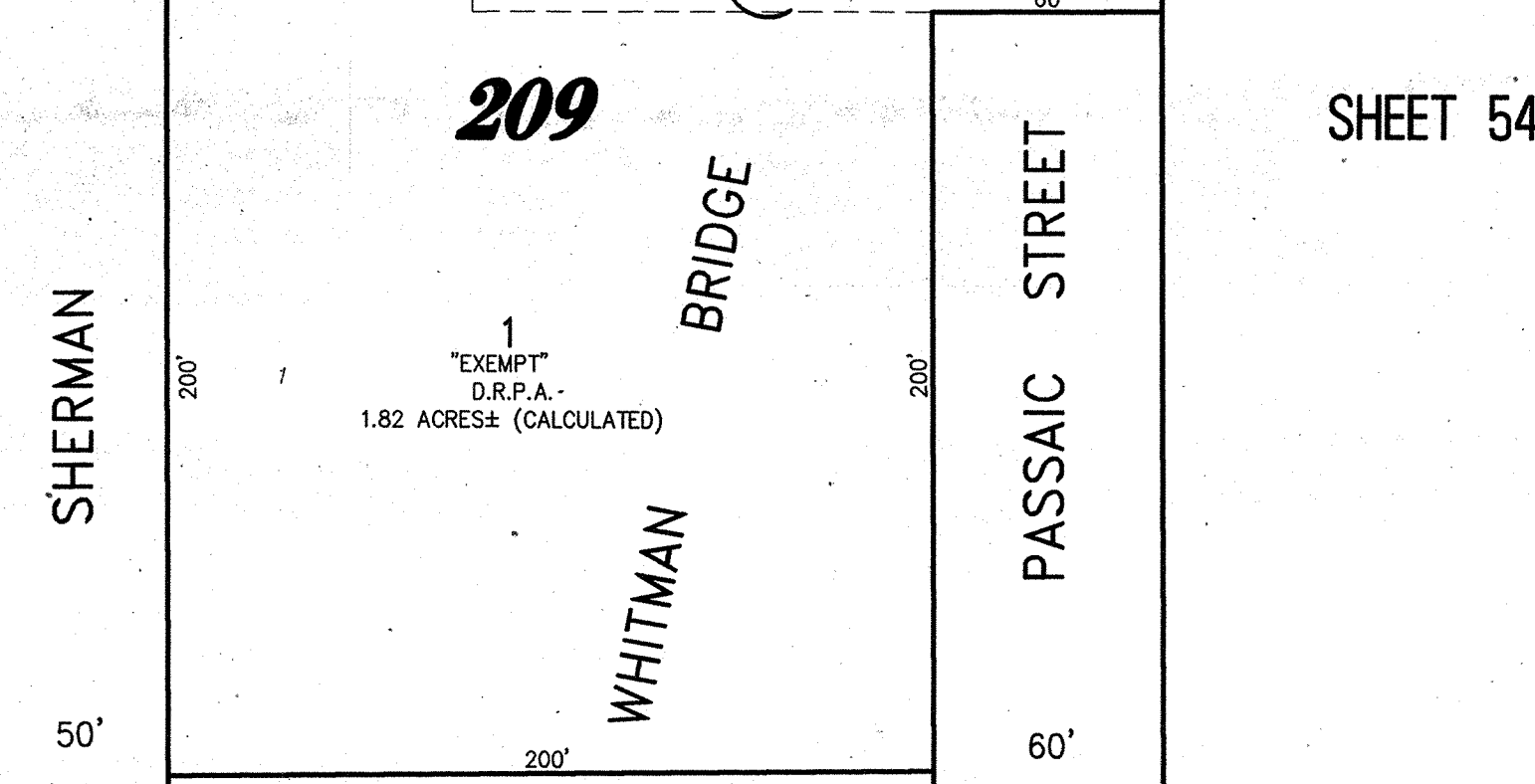
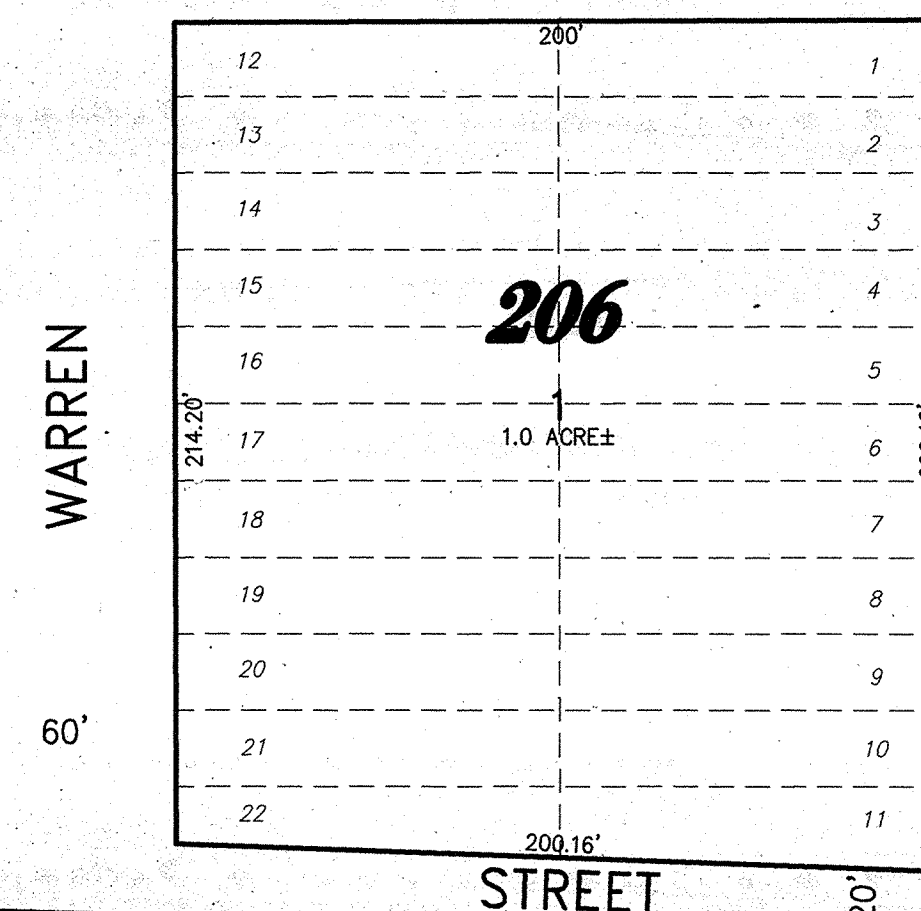
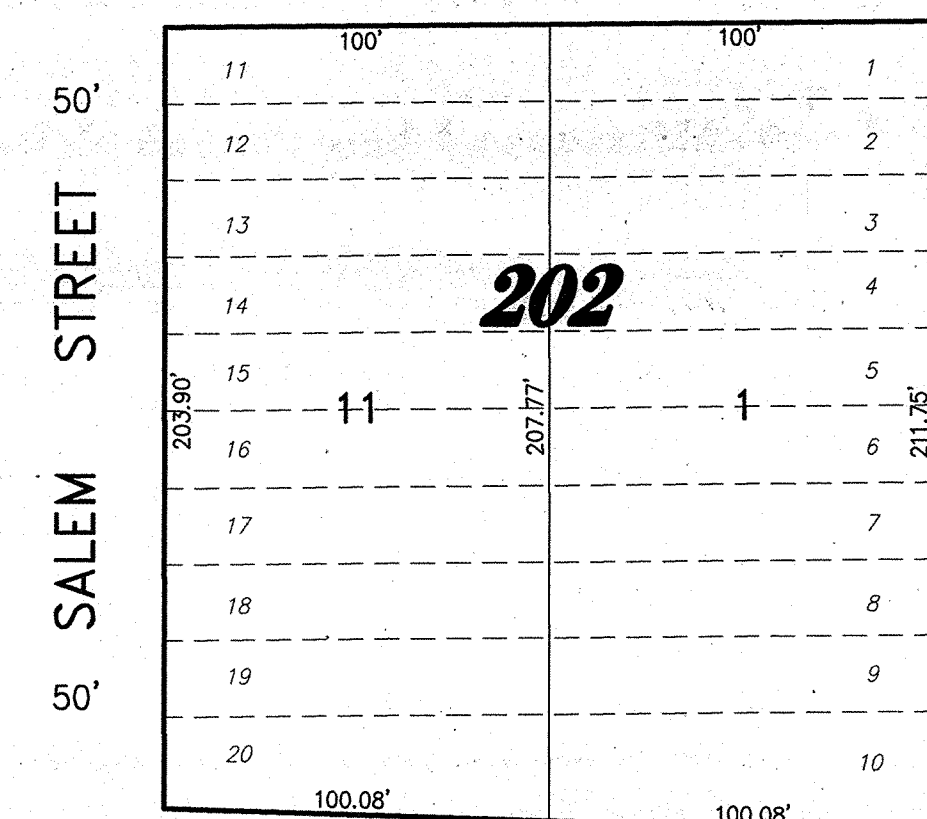
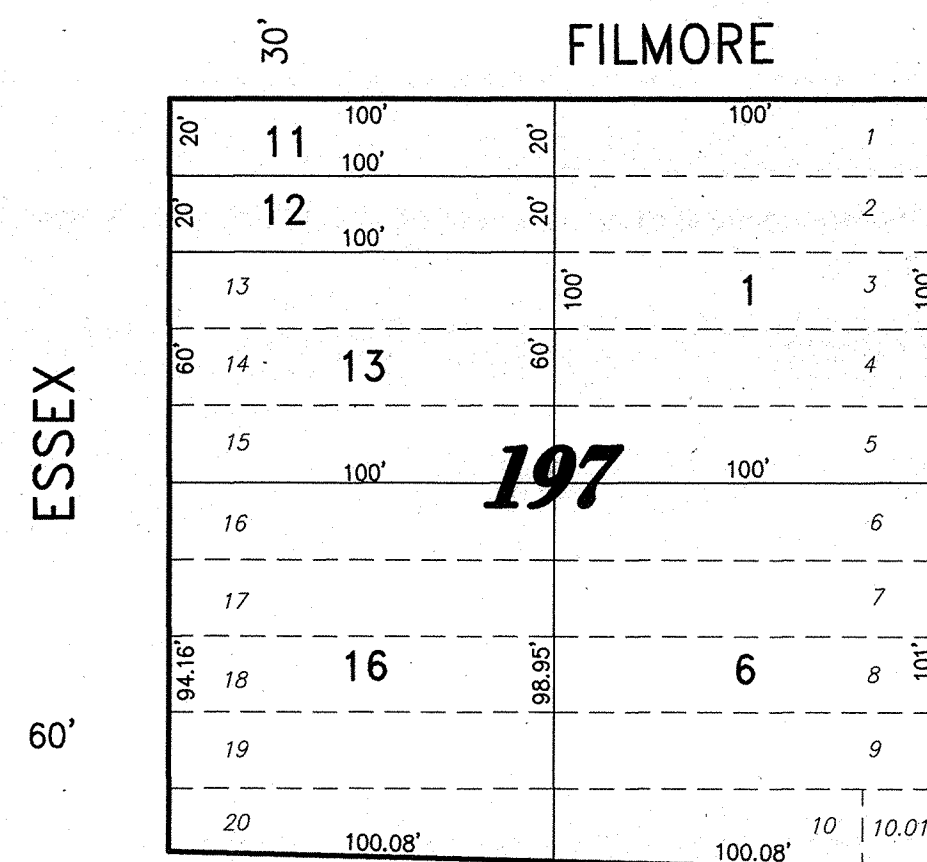
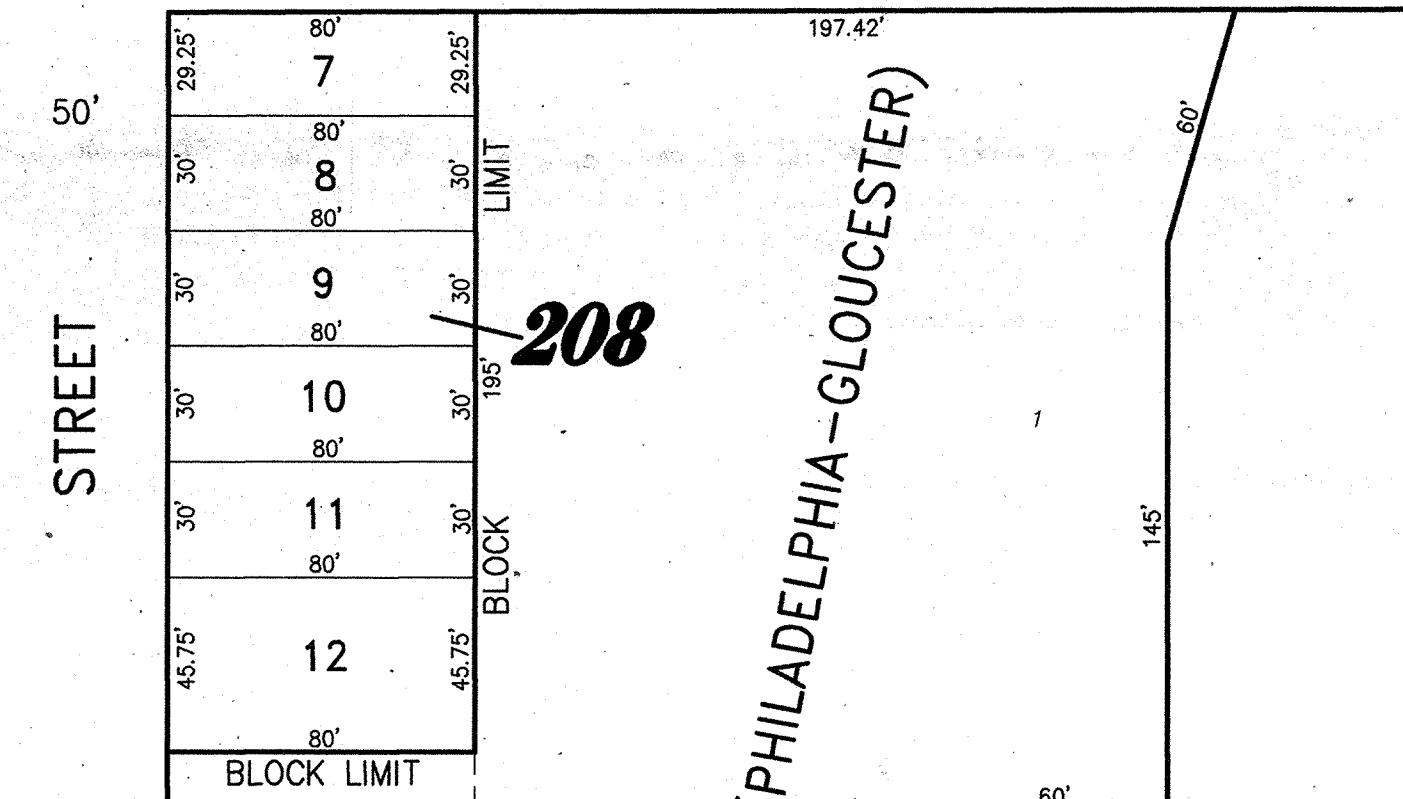
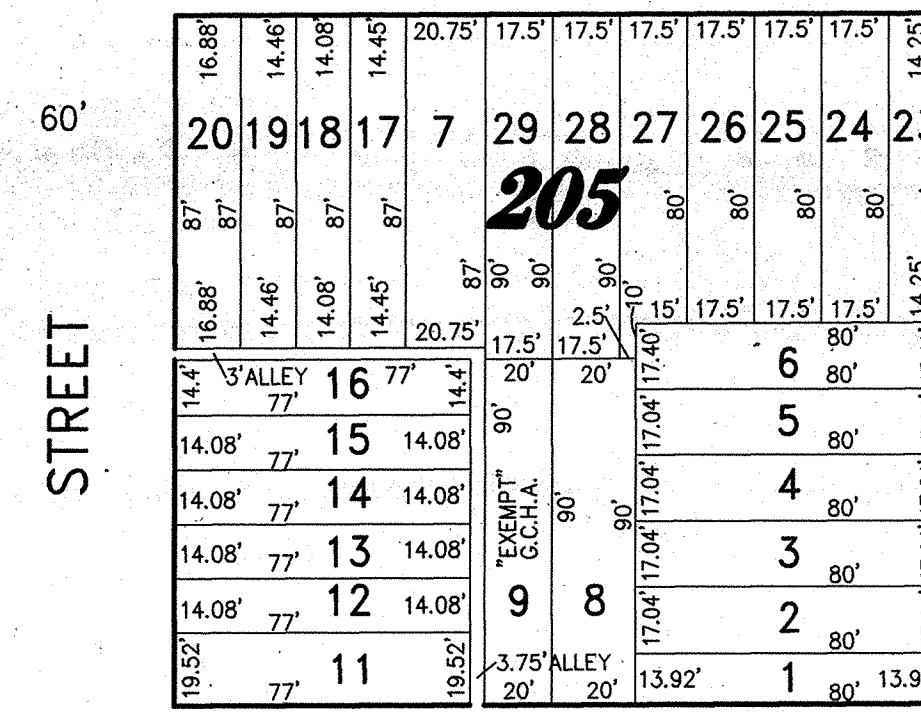
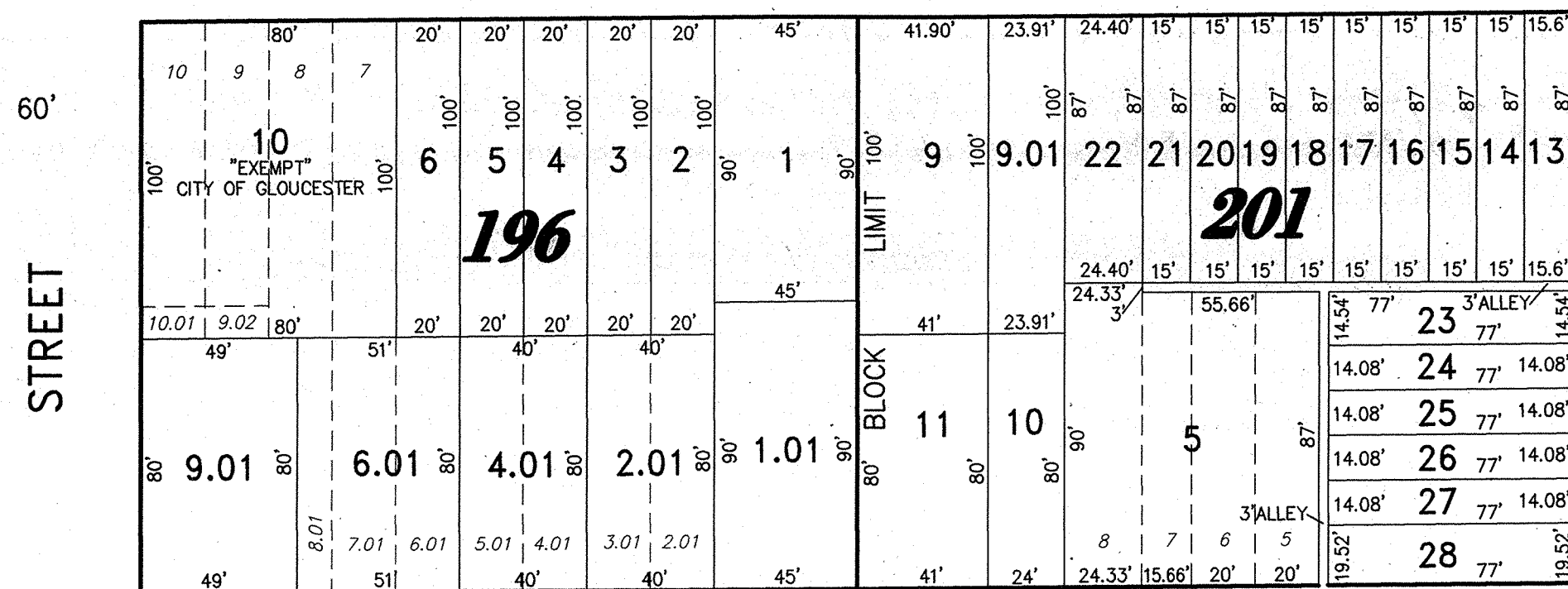
SHEET 3

SHEET 2

SHEET 1



66' BROADWAY (COUNTY ROUTE NO. 551) 66'



SHEET 20

SHEET 54

SHEET 53

NEW JERSEY DEPARTMENT OF THE TREASURY  
 DIVISION OF TAXATION  
 PROPERTY ADMINISTRATION TAX MAP SECTION  
 APPROVED AS A TAX MAP PURSUANT TO THE  
 AUTHORITY OF N.J.S.A. 54:1-16 & N.J.S.A. 54:50-1  
 FOR THE DIRECTOR, DIVISION OF TAXATION  
 CTA Supervising Field Rep  
 DATE: **DEC 11 2013** SERIAL NO. **1030**

**TAX MAP**  
**CITY OF GLOUCESTER**  
 CAMDEN COUNTY NEW JERSEY  
 SCALE: 1" = 50' DATE: 5-15-1992  
 CRAIG F. REMINGTON LAND SURVEYOR LIC. NO. 23924  
 REMINGTON & VERNICK ENGINEERS  
 232 KING'S HIGHWAY EAST HADDONFIELD, N.J. 08033  
 (856) 795-9595, FAX (856) 795-1892  
 WEB SITE ADDRESS: WWW.RVE.COM  
 TO SHOW CONDITIONS AS OF 06-18-2013