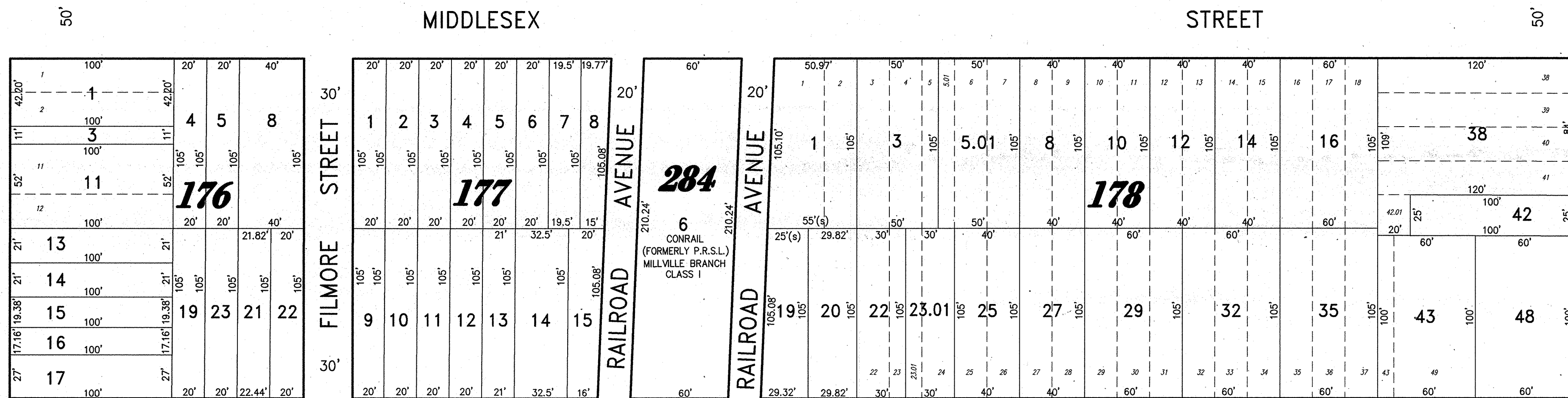


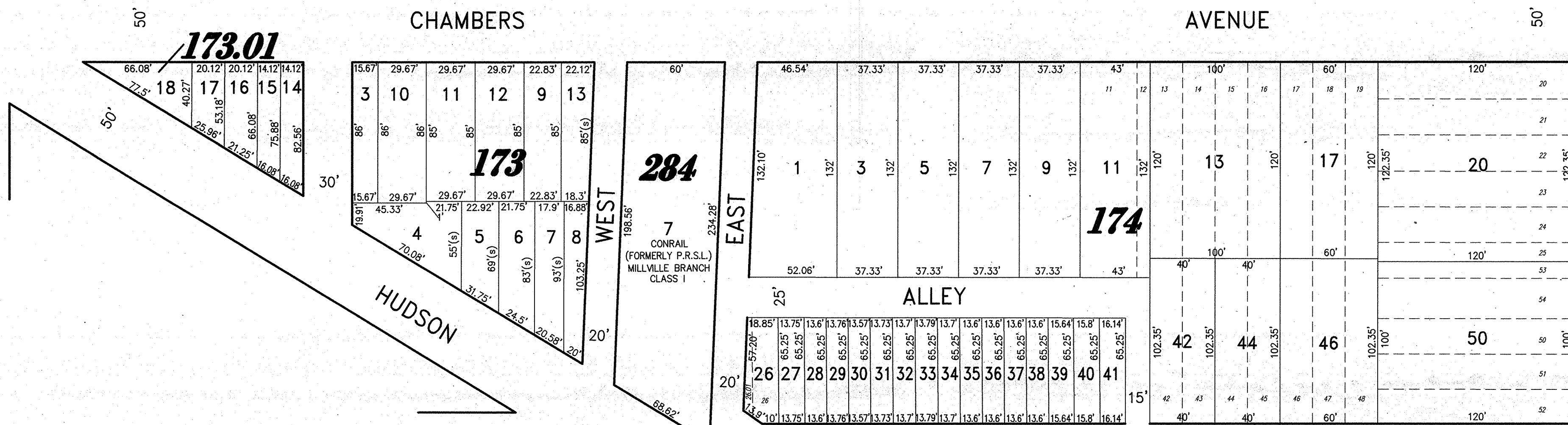
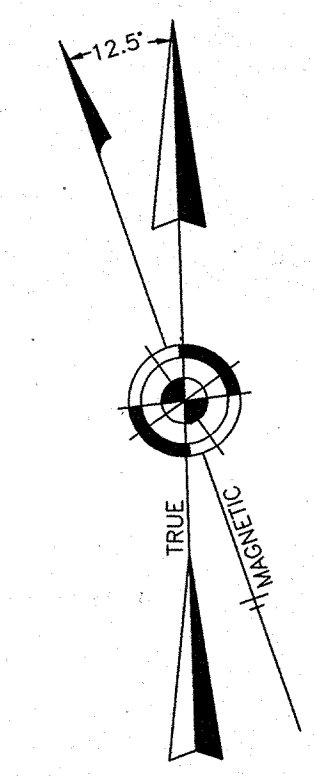
SHEET 6

BROADWAY (C.R. NO. 551)



SHEET 20

SHEET 21



SHEET 24

SHEET 23

NOTED BY THE COUNTY CLERK OF CAMDEN COUNTY, NEW JERSEY, AS BEING APPROVED AS A TAX MAP PURSUANT TO THE PROVISIONS OF N.J.S.A. 54:1-7 & N.J.S.A. 54:5-1 FOR THE DIRECTOR, DIVISION OF TAXATION

DEC 11 2013

TAX MAP
CITY OF GLOUCESTER

CAMDEN COUNTY NEW JERSEY
 SCALE: 1" = 50' DATE: 5-15-1992

CRAIG F. REMINGTON LAND SURVEYOR LIC. NO. 23924



24 GA 28003800
REMINGTON & VERNICK ENGINEERS
 232 KING'S HIGHWAY EAST HADDONFIELD, N.J. 08033
 (856) 795-9595, FAX (856) 795-1882
 WEB SITE ADDRESS: WWW.RVE.COM

TO SHOW CONDITIONS AS OF 06-18-2013

REVISIONS		
11-18-2004	CRAIG F. REMINGTON	23924
12-31-2011	CRAIG F. REMINGTON	23924
01-02-2013	CRAIG F. REMINGTON	23924

NOTE:

THIS SHEET HAS BEEN DRAWN USING COMPUTER AIDED DRAFTING/DESIGN (CAD/D) AND COORDINATE GEOMETRY (COGO).