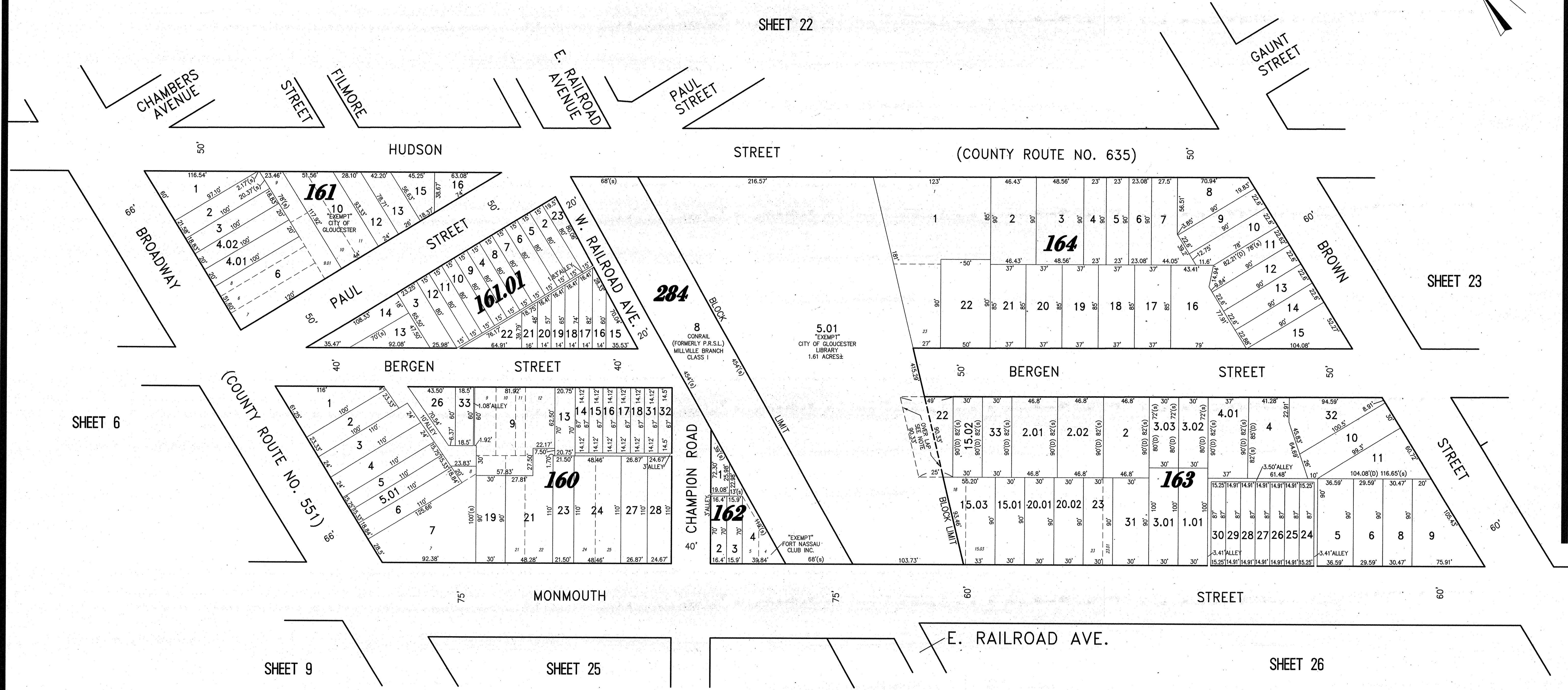


REVISIONS		
11-18-2004	CRAIG F. REMINGTON	23924
12-31-2011	CRAIG F. REMINGTON	23924
01-02-2013	CRAIG F. REMINGTON	23924

NOTE:
 THIS SHEET HAS BEEN DRAWN USING COMPUTER AIDED DRAFTING/DESIGN (CAD/D) AND COORDINATE GEOMETRY (COGO).

SHEET 22



SHEET 6

SHEET 23

SHEET 9

SHEET 25

SHEET 26

OVERLAP NOTE:
 RE: LOT 5.01, BLOCK 164 AND LOT 22, BLOCK 163
 THE OVERLAPPING LINES & DIMENSIONS SHOWN ARE PLOTTED IN ACCORDANCE WITH THE METES AND BOUNDS DESCRIPTIONS APPEARING IN THE LAST DEED OF RECORD FOR EACH PARCEL & DO NOT PURPORT TO REPRESENT TITLE OR OWNERSHIP STATUS IN ANY MANNER. THESE SITUATIONS ARE SUBJECT TO SOLUTION BY THE OWNERS CONCERNED.

NEW JERSEY DEPARTMENT OF THE TREASURY
 DIVISION OF TAXATION
 PROPERTY ADMINISTRATION TAX MAP SECTION
 APPROVED AS A TAX MAP PURSUANT TO THE
 AUTHORITY OF N.J.S.A. 54:1-15 & N.J.S.A. 54:5-1
 FOR THE DIRECTOR, DIVISION OF TAXATION

Sue Davison CTA Supervising Field Rep
 Sue Davison, CTA Supervising Field Rep

DATE: **DEC 11 2013** SERIAL NO. **1030**

TAX MAP
CITY OF GLOUCESTER
 CAMDEN COUNTY NEW JERSEY
 SCALE: 1" = 50' DATE: 5-15-1992

CRAIG F. REMINGTON LAND SURVEYOR LIC. NO. 23924

REMINGTON & VERNICK ENGINEERS
 24 GA 28003800
 232 KING'S HIGHWAY EAST HADDONFIELD, NJ 08033
 (856) 795-9595, FAX (856) 795-1892
 WEB SITE ADDRESS: WWW.RVE.COM

TO SHOW CONDITIONS AS OF 06-18-2013