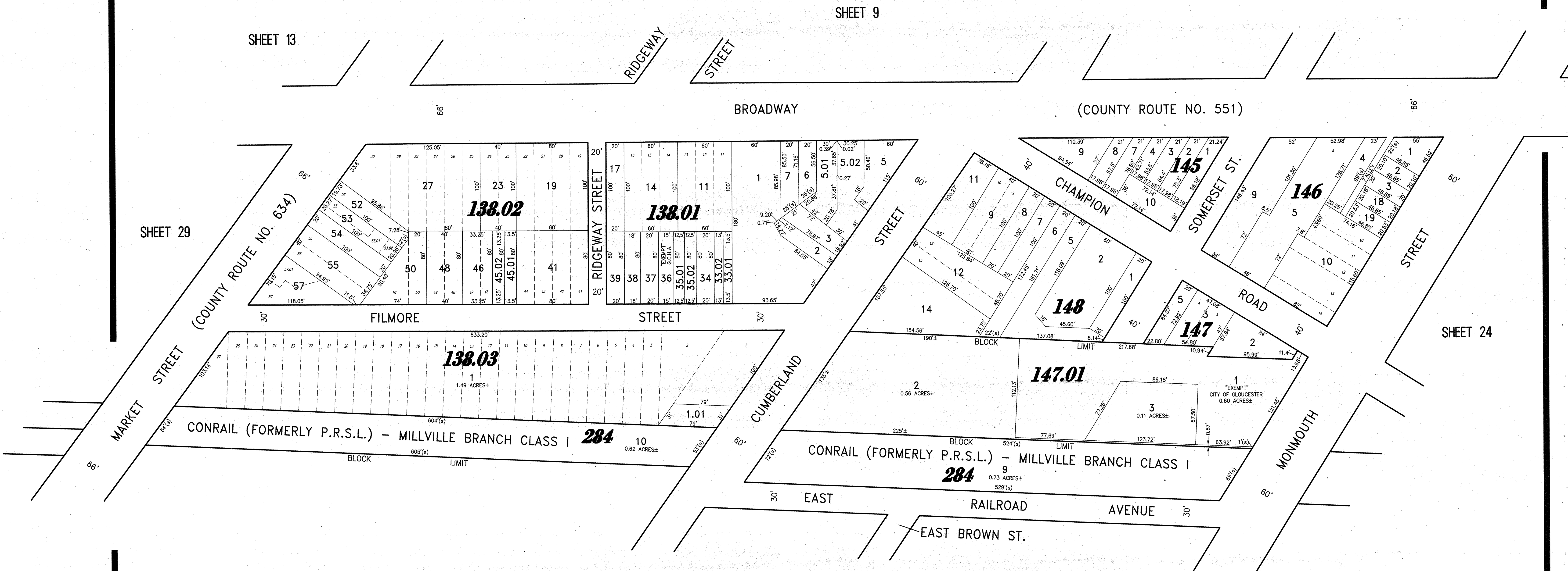
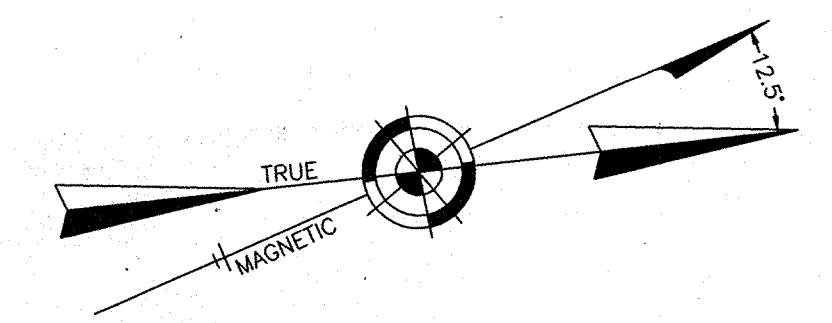


REVISIONS		
11-18-2004	CRAIG F. REMINGTON	23924
12-31-2011	CRAIG F. REMINGTON	23924
01-02-2013	CRAIG F. REMINGTON	23924

NOTE:  
THIS SHEET HAS BEEN DRAWN USING COMPUTER AIDED DRAFTING/DESIGN (CAD/D) AND COORDINATE GEOMETRY (COGO).



SHEET 13

SHEET 9

SHEET 29

SHEET 24

SHEET 26

NEW JERSEY DEPARTMENT OF THE TREASURY  
DIVISION OF TAXATION  
PROPERTY ADMINISTRATION TAX MAP SECTION  
APPROVED AS A TAX MAP PURSUANT TO THE  
AUTHORITY OF N.J.S.A. 54:1-4.5 & N.J.S.A. 54:1-4.6  
FOR THE DIRECTOR, DIVISION OF TAXATION

*Shee Dawson* CTA Supervising Field Rep  
Shee Dawson, CTA Supervising Field Rep

DATE: DEC 11 2013 SERIAL NO. 1090

**TAX MAP**  
**CITY OF GLOUCESTER**  
CAMDEN COUNTY NEW JERSEY  
SCALE: 1" = 50' DATE: 5-15-1992

CRAIG F. REMINGTON LAND SURVEYOR LIC. NO. 23924

REMINGTON & VERNICK ENGINEERS  
232 KING'S HIGHWAY EAST HADDONFIELD, N.J. 08033  
(856) 795-9595, FAX (856) 795-1882  
WEB SITE ADDRESS: WWW.RVE.COM

TO SHOW CONDITIONS AS OF 06-18-2013