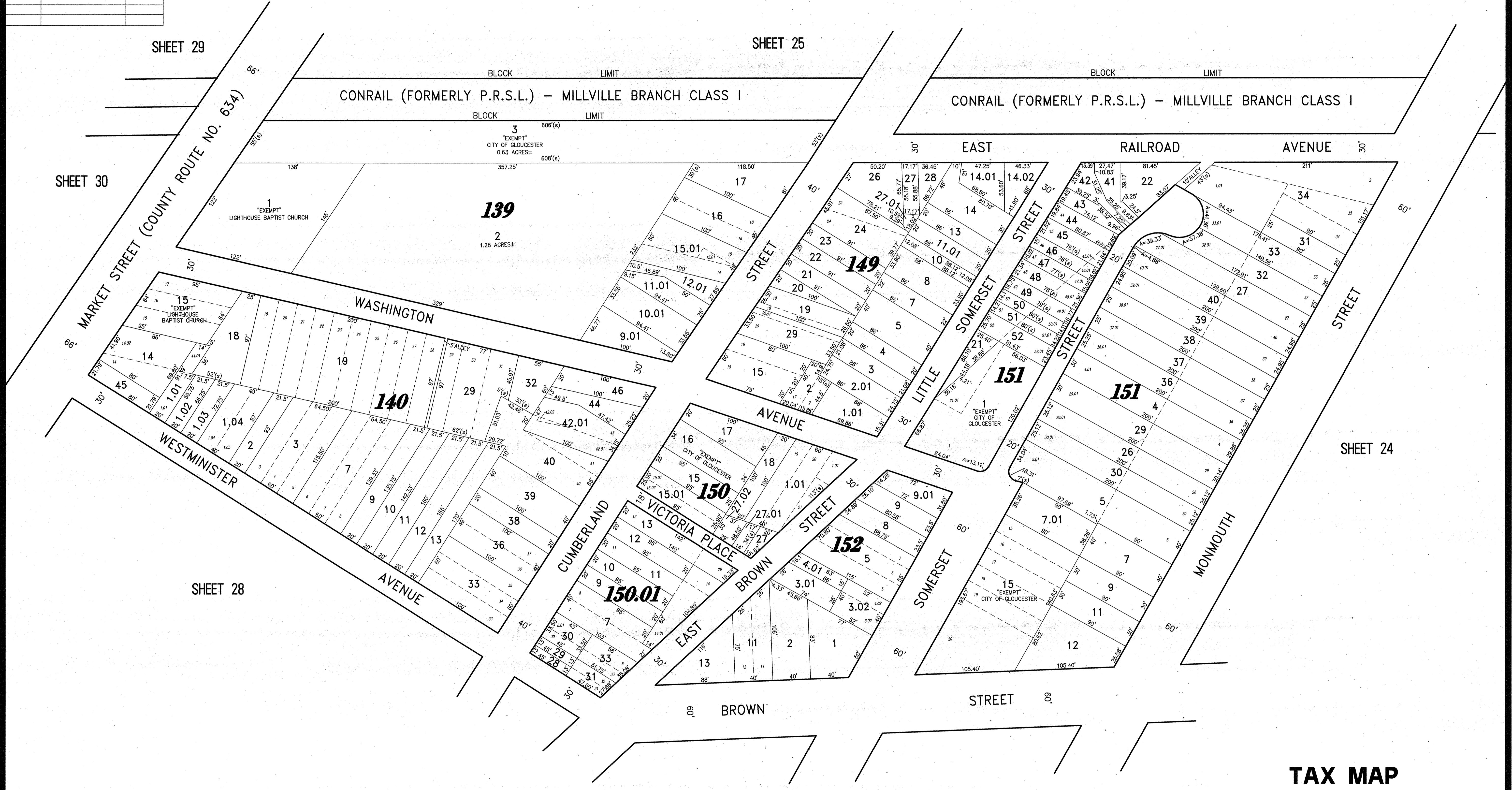
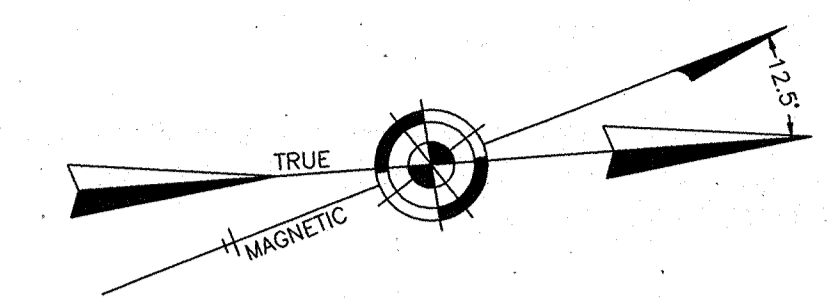


REVISIONS		
11-18-2004	CRAIG F. REMINGTON	23924
12-31-2011	CRAIG F. REMINGTON	23924
01-02-2013	CRAIG F. REMINGTON	23924

NOTE:
 THIS SHEET HAS BEEN DRAWN USING COMPUTER AIDED DRAFTING/DESIGN (CAD/D) AND COORDINATE GEOMETRY (COGO).



NEW JERSEY DEPARTMENT OF THE TREASURY
 DIVISION OF TAXATION
 PROPERTY ADMINISTRATION TAX MAP SECTION
 APPROVED AS A TAX MAP PURSUANT TO THE
 AUTHORITY OF N.J.S.A. 54:1-15 & N.J.S.A. 54:5-1
 FOR THE DIRECTOR, DIVISION OF TAXATION
 Sue Dawson CTA Supervising Field Rep
 Sue Dawson, CTA Supervising Field Rep
 DATE: DEC 11 2013 SERIAL NO. 1030

TAX MAP
CITY OF GLOUCESTER

CAMDEN COUNTY NEW JERSEY
 SCALE: 1" = 50' DATE: 5-15-1992

CRAIG F. REMINGTON LAND SURVEYOR LIC. NO. 23924



REMINGTON & VERNICK ENGINEERS
 232 KING'S HIGHWAY EAST, HADDONFIELD, N.J. 08033
 (856) 795-9595, FAX (856) 795-1692
 WEB SITE ADDRESS: WWW.RVE.COM

TO SHOW CONDITIONS AS OF 06-18-2013