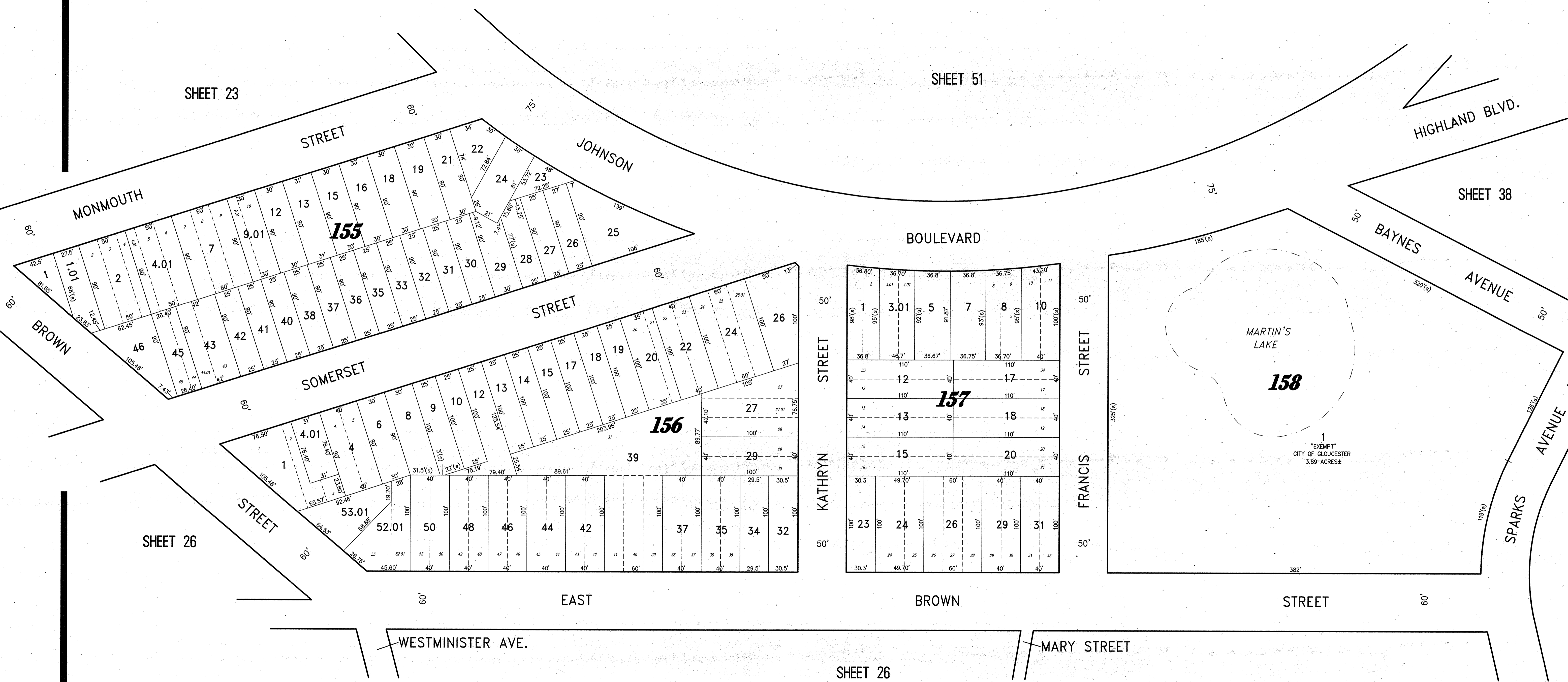
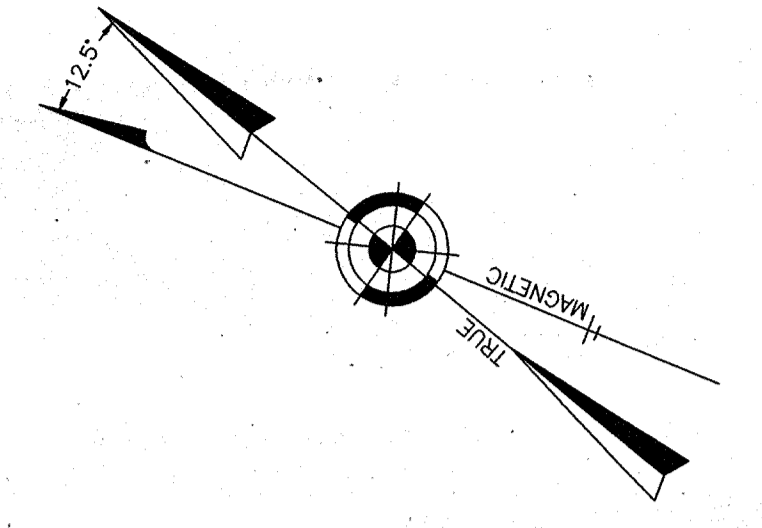


REVISIONS		
11-18-2004	CRAIG F. REMINGTON	23924
12-31-2011	CRAIG F. REMINGTON	23924
01-02-2013	CRAIG F. REMINGTON	23924

NOTE:  
THIS SHEET HAS BEEN DRAWN USING COMPUTER AIDED DRAFTING/DESIGN (CAD/D) AND COORDINATE GEOMETRY (COGO).



SHEET 26

SHEET 23

SHEET 51

SHEET 38

SHEET 37

SHEET 26

NEW JERSEY DEPARTMENT OF THE TREASURY  
DIVISION OF TAXATION  
PROPERTY ADMINISTRATION TAX MAP SECTION  
APPROVED AS A TAX MAP PURSUANT TO THE  
AUTHORITY OF N.J.S.A. 54:1-15 & N.J.S.A. 54:50-1  
FOR THE DIRECTOR, DIVISION OF TAXATION

Sue Davison, CTA Supervising Field Rep.  
DATE: **DEC 11 2013** SERIAL NO. **1030**

**TAX MAP**  
**CITY OF GLOUCESTER**  
CAMDEN COUNTY NEW JERSEY  
SCALE: 1" = 50' DATE: 5-15-1992  
**CRAIG F. REMINGTON LAND SURVEYOR LIC. NO. 23924**  
**REMINGTON & VERNICK ENGINEERS**  
232 KING'S HIGHWAY EAST, HADDONFIELD, N.J. 08033  
(856) 795-9655, FAX (856) 795-1682  
WEB SITE ADDRESS: WWW.RVE.COM  
TO SHOW CONDITIONS AS OF 06-18-2013