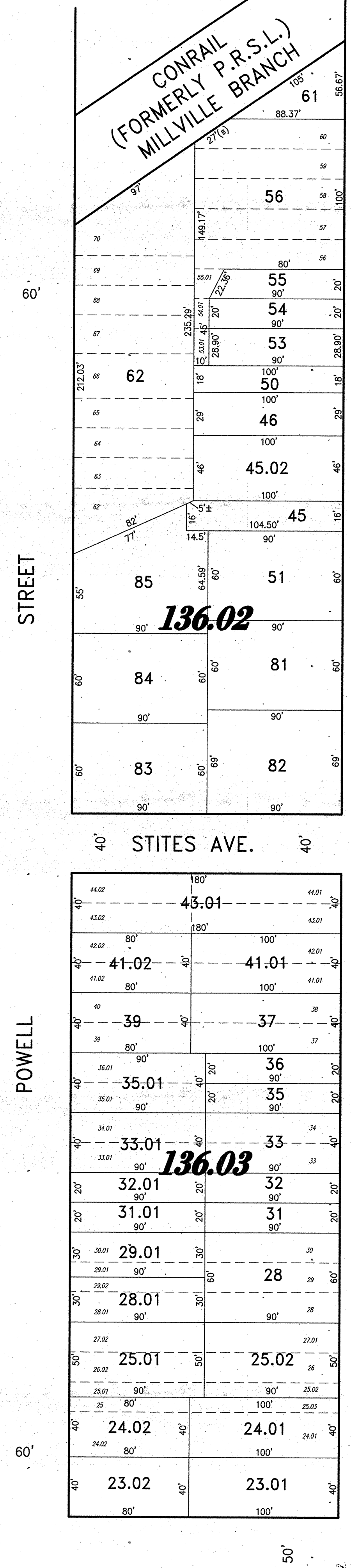
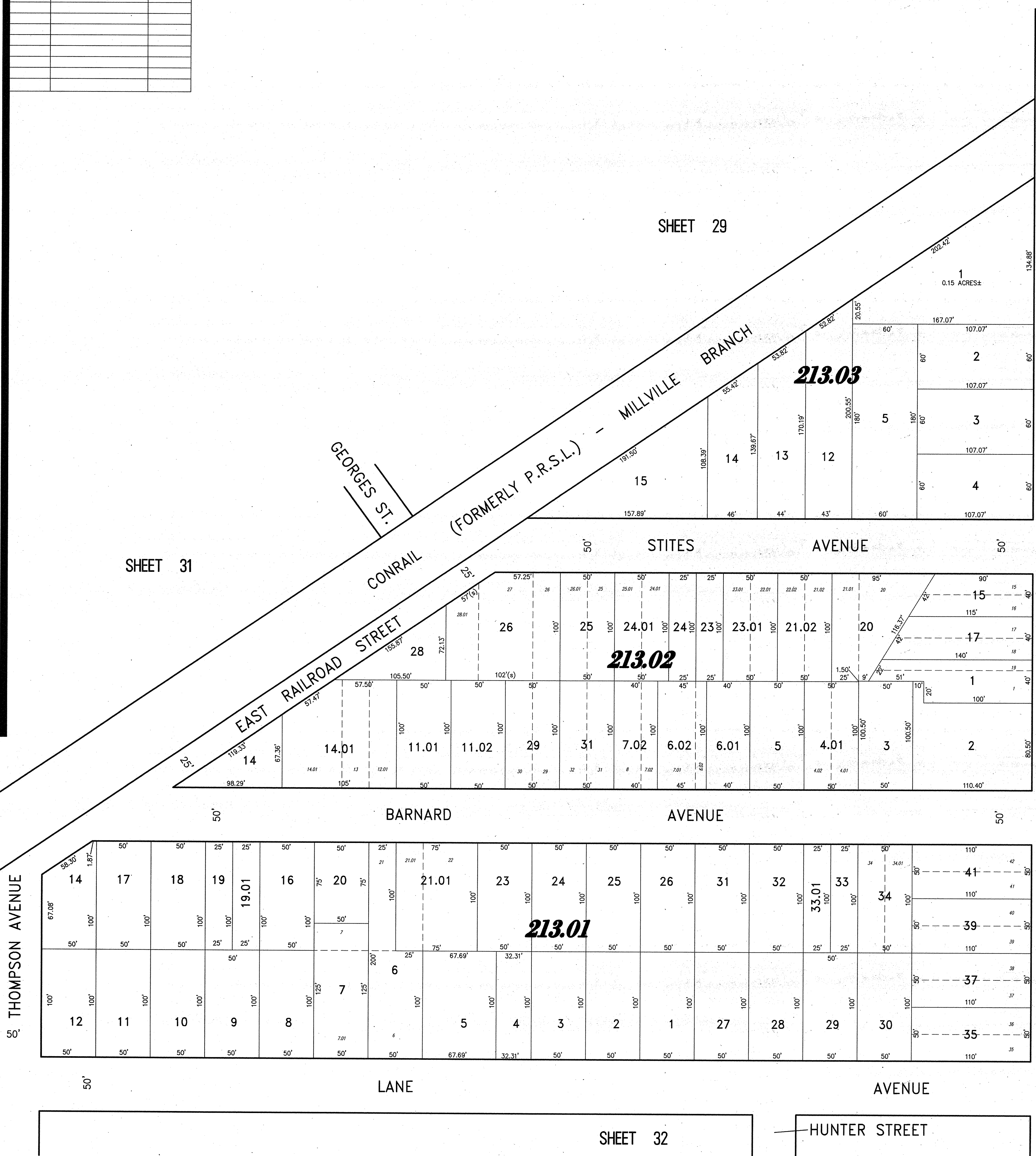
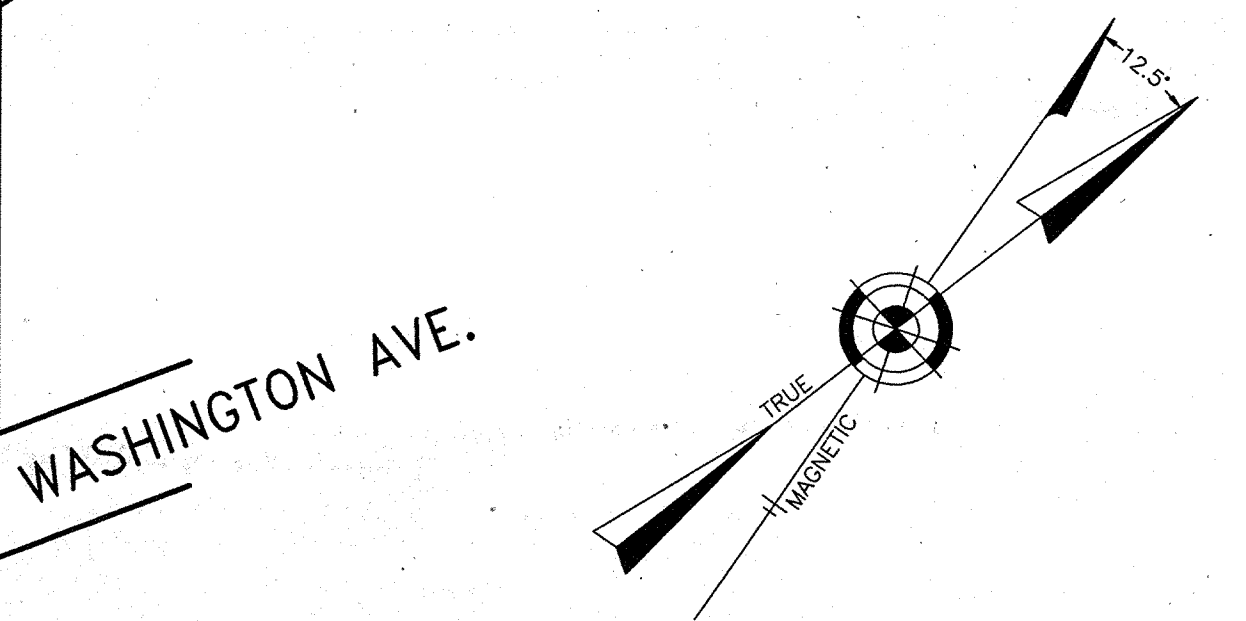


REVISIONS		
11-18-2004	CRAIG F. REMINGTON	23924
05-01-2007	CRAIG F. REMINGTON	23924
01-02-2013	CRAIG F. REMINGTON	23924

NOTE:
THIS SHEET HAS BEEN DRAWN USING COMPUTER AIDED DRAFTING/DESIGN (CAD/D) AND COORDINATE GEOMETRY (COGO).



(COUNTY ROUTE NO. 634)



SHEET 26

WESTMINSTER AVENUE

SHEET 28

THIS MAP IS A PUBLIC RECORD AND IS THE PROPERTY OF THE CLERK OF SUPERIOR COURT, CAMDEN COUNTY, NEW JERSEY. IT IS HEREBY CERTIFIED AS A TRUE AND CORRECT COPY OF THE ORIGINAL MAP AS FILED IN THE OFFICE OF THE CLERK OF SUPERIOR COURT, CAMDEN COUNTY, NEW JERSEY, ON DEC 11 2013.

TAX MAP
CITY OF GLOUCESTER
 CAMDEN COUNTY NEW JERSEY
 SCALE: 1" = 50' DATE: 5-15-1992
CRAIG F. REMINGTON LAND SURVEYOR LIC. NO. 23924
 24 GA 28003800
REMINGTON & VERNICK ENGINEERS
 232 KING'S HIGHWAY EAST HADDONFIELD, N.J. 08033
 (856) 795-9595 FAX (856) 795-4682
 WEB SITE ADDRESS: WWW.RVE.COM
 TO SHOW CONDITIONS AS OF 06-18-2013