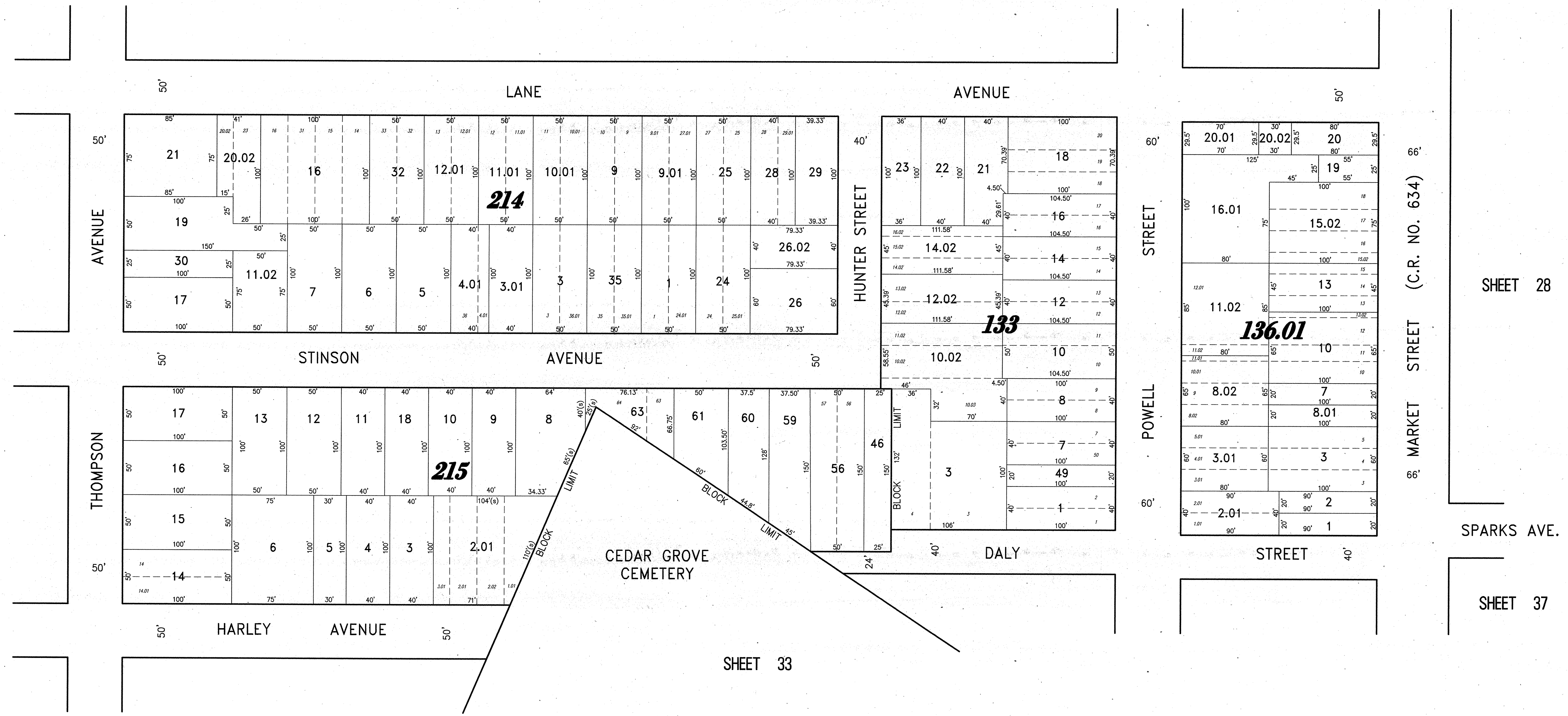


REVISIONS		
11-18-2004	CRAIG F. REMINGTON	23924
01-02-2013	CRAIG F. REMINGTON	23924

NOTE:
THIS SHEET HAS BEEN DRAWN USING COMPUTER AIDED DRAFTING/DESIGN (CAD/D) AND COORDINATE GEOMETRY (COGO).

SHEET 30



SHEET 34

SHEET 28

SHEET 37

SHEET 33

TAX MAP
CITY OF GLOUCESTER
CAMDEN COUNTY NEW JERSEY

SCALE: 1" = 50' DATE: 5-15-1992

CRAIG F. REMINGTON LAND SURVEYOR LIC. NO. 23924

REMINGTON & VERNICK ENGINEERS
232 KING'S HIGHWAY EAST HADDONFIELD, N.J. 08033
(856) 795-9595, FAX (856) 795-1882
WEB SITE ADDRESS: WWW.RVE.COM

TO SHOW CONDITIONS AS OF 06-18-2013

NEW JERSEY DEPARTMENT OF TREASURY
PROPERTY APPRAISAL DIVISION
OFFICE OF THE COUNTY ASSESSOR
COUNTY OF CAMDEN
FOR THE YEAR ENDING 2013

[Signature] CTA Supervising Field Rep
Joe Davison, CTA Supervising Field Rep

DEC 11 2013 1030