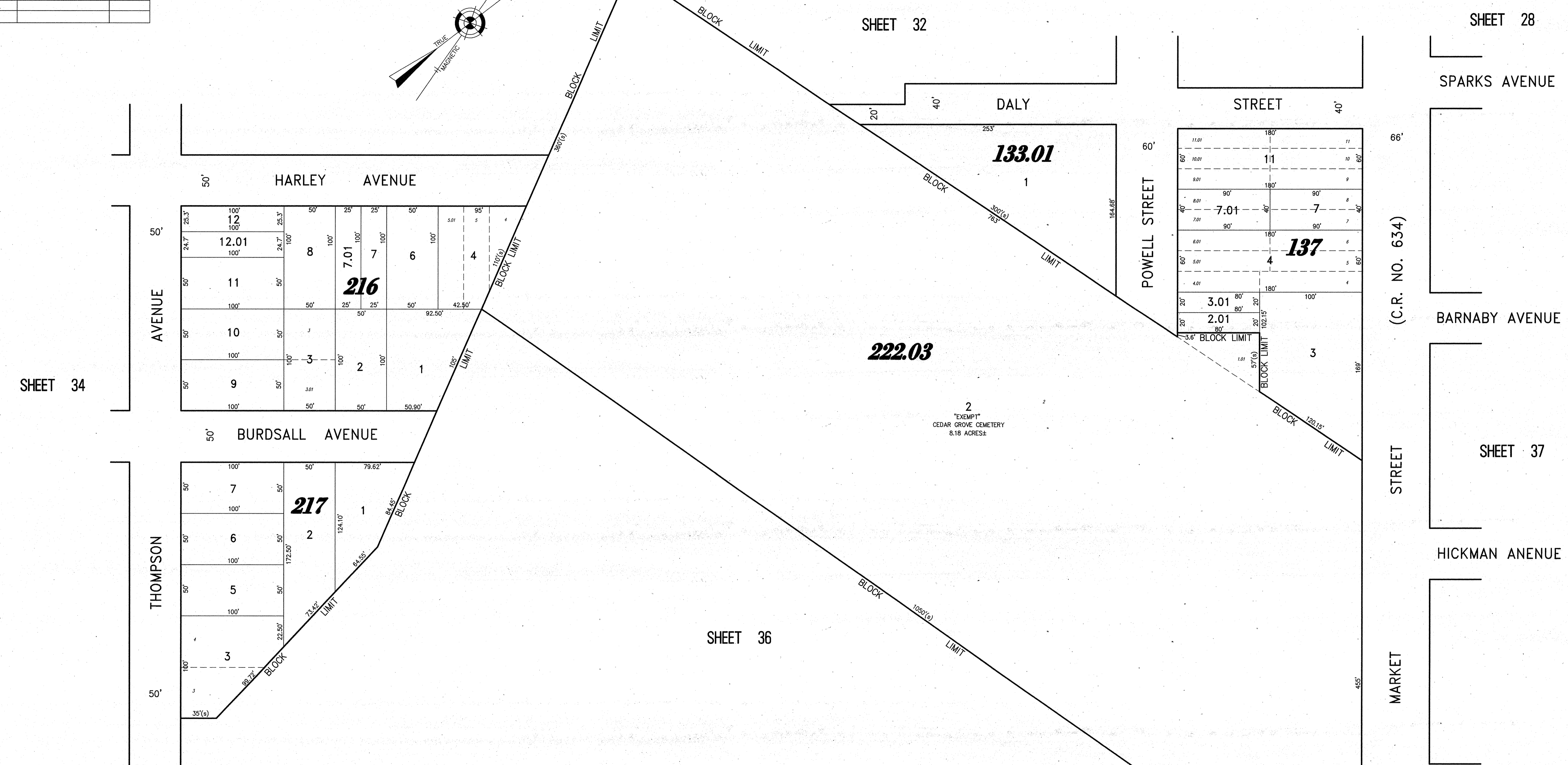
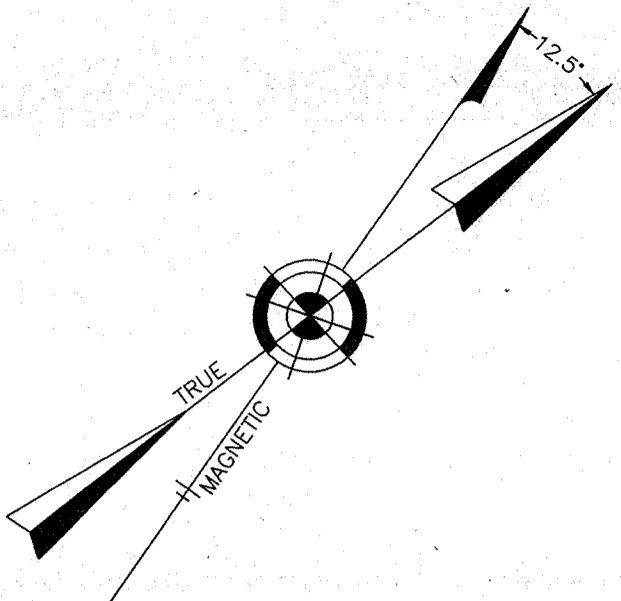


REVISIONS		
11-18-2004	CRAIG F. REMINGTON	23924
01-02-2013	CRAIG F. REMINGTON	23924

NOTE:
THIS SHEET HAS BEEN DRAWN USING COMPUTER AIDED DRAFTING/DESIGN (CADD) AND COORDINATE GEOMETRY (COGO).



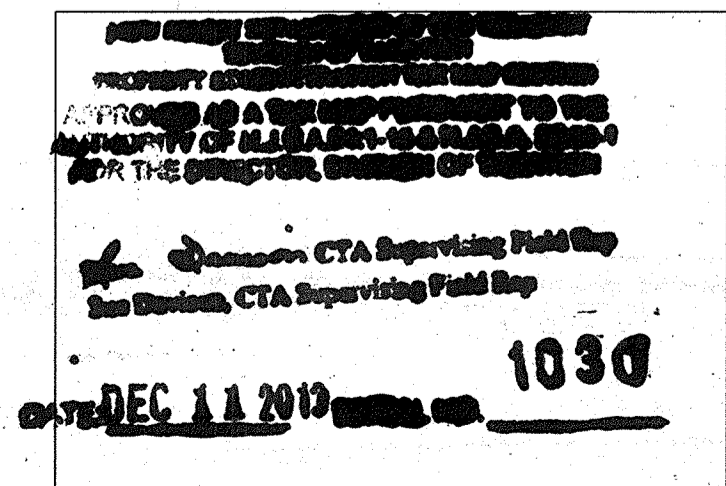
SHEET 34

SHEET 32

SHEET 28

SHEET 36

SHEET 37



TAX MAP
CITY OF GLOUCESTER

CAMDEN COUNTY NEW JERSEY
SCALE: 1" = 50' DATE: 5-15-1992

CRAIG F. REMINGTON LAND SURVEYOR LIC. NO. 23924



REMINGTON & VERNICK ENGINEERS
232 KING'S HIGHWAY EAST HADDONFIELD, N.J. 08033
(856) 795-9595, FAX (856) 795-4882
WEB SITE ADDRESS: WWW.RVE.COM

TO SHOW CONDITIONS AS OF 06-18-2013