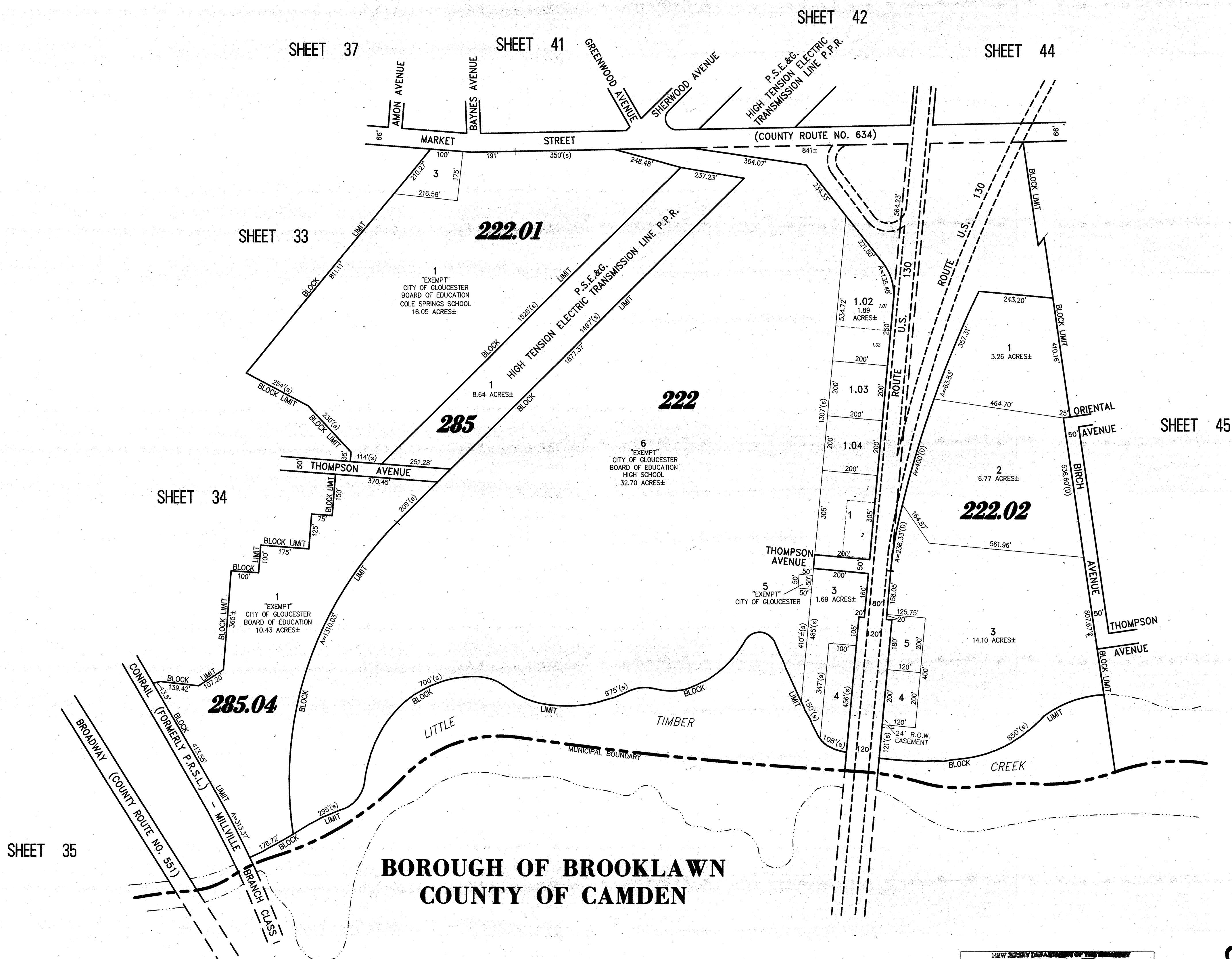
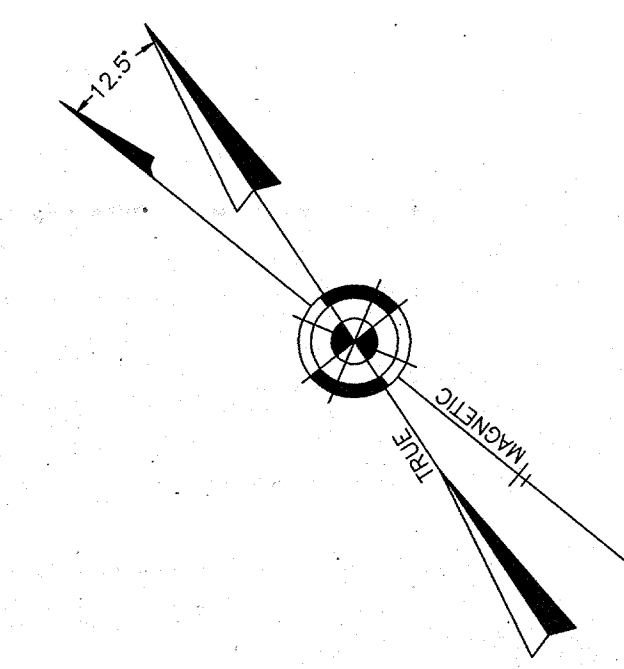


REVISIONS		
11-18-2004	CRAIG F. REMINGTON	23924
12-31-2011	CRAIG F. REMINGTON	23924
01-02-2013	CRAIG F. REMINGTON	23924

**NOTE:**  
 THIS SHEET HAS BEEN DRAWN USING COMPUTER AIDED DRAFTING/DESIGN  
 (CAD/D) AND COORDINATE GEOMETRY (COGO).



**BOROUGH OF BROOKLAWN  
 COUNTY OF CAMDEN**

NEW JERSEY DEPARTMENT OF TREASURY  
 DIVISION OF TAXATION  
 PROPERTY ADMINISTRATION TAX MAP DIVISION  
 PREPARED AS A TAX MAP PURSUANT TO THE  
 AUTHORITY OF P.L. 2012-188, CHAPTER 188-1  
 FOR THE DIRECTOR, DIVISION OF TAXATION  
 SUPERVISOR CTA Supervising Field Rep  
 Sue Barlow, CTA Supervising Field Rep  
 DATE: DEC 11 2013 SERIAL NO. 1030

**TAX MAP  
 CITY OF GLOUCESTER**

CAMDEN COUNTY NEW JERSEY  
 SCALE: 1" = 200' DATE: 5-15-1992

CRAIG F. REMINGTON LAND SURVEYOR LIC. NO. 23924

**REMINGTON & VERNICK ENGINEERS**  
 232 KING'S HIGHWAY EAST HADDONFIELD, N.J. 08033  
 (856) 795-9595, FAX (856) 795-1882  
 WEB SITE ADDRESS: WWW.RVE.COM

TO SHOW CONDITIONS AS OF 06-18-2013