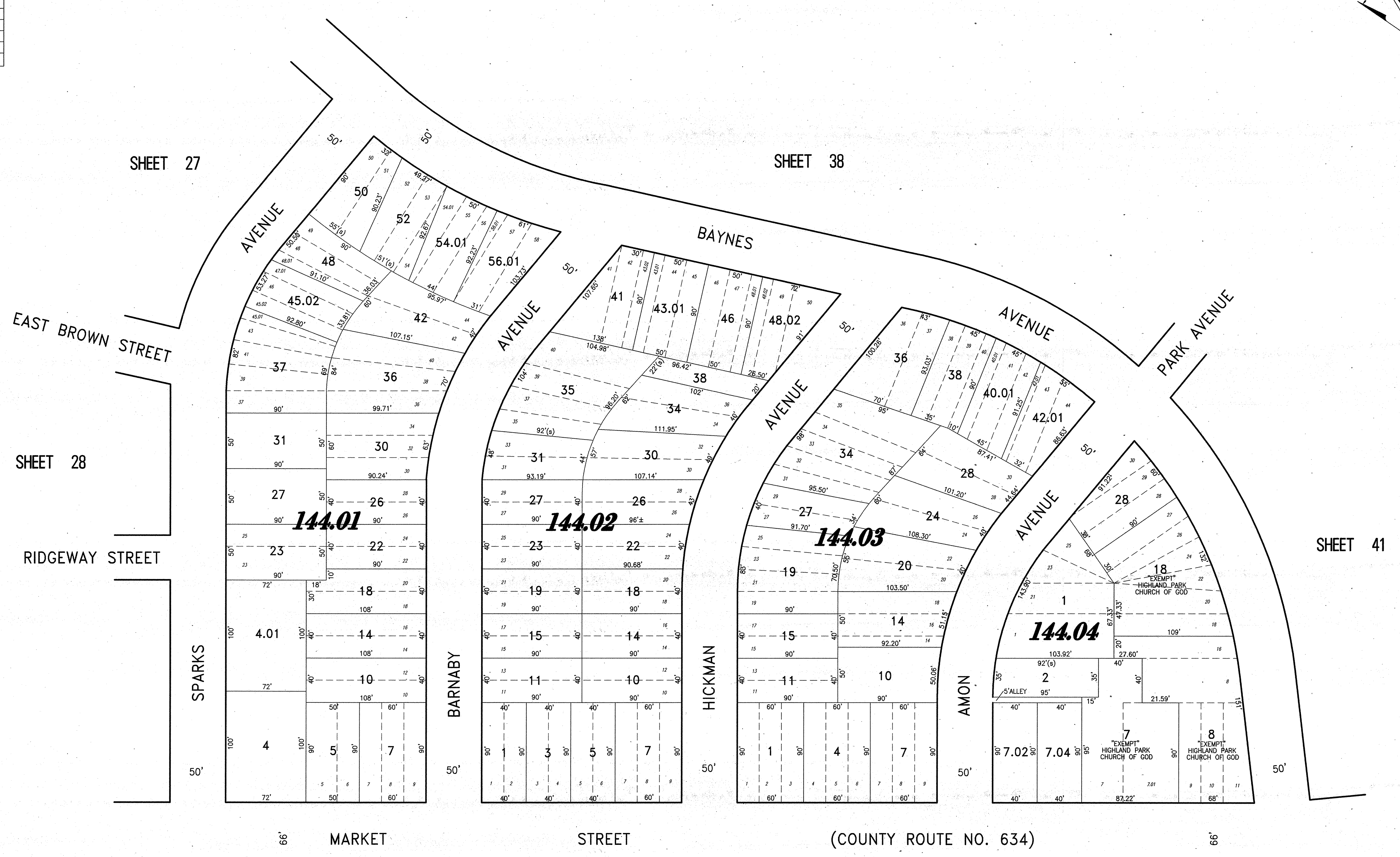
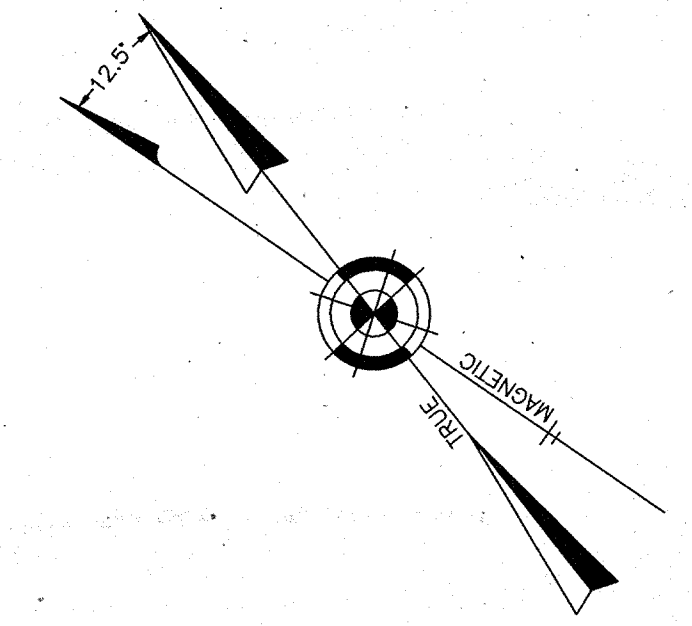
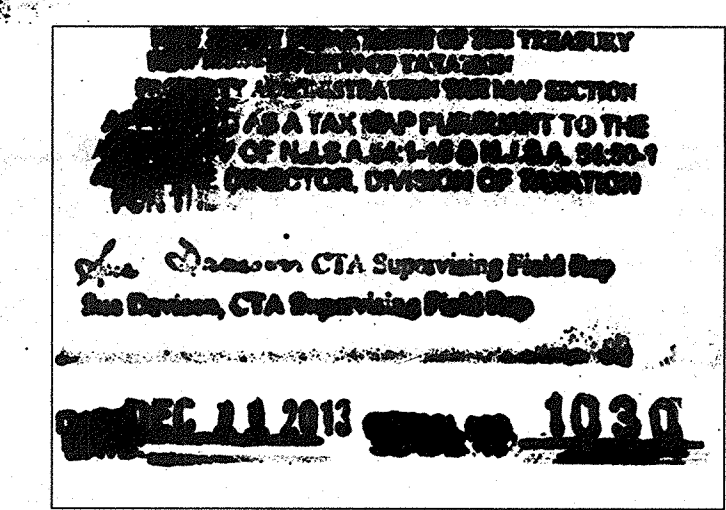


REVISIONS		
11-18-2004	CRAIG F. REMINGTON	23924
12-31-2011	CRAIG F. REMINGTON	23924
01-02-2013	CRAIG F. REMINGTON	23924

NOTE:  
THIS SHEET HAS BEEN DRAWN USING COMPUTER AIDED DRAFTING/DESIGN (CAD/D) AND COORDINATE GEOMETRY (COGO).



SHEET 27      SHEET 28      SHEET 29      SHEET 30      SHEET 31      SHEET 32      SHEET 33      SHEET 34      SHEET 35      SHEET 36      SHEET 37      SHEET 38      SHEET 39      SHEET 40      SHEET 41



**TAX MAP**  
**CITY OF GLOUCESTER**  
CAMDEN COUNTY · NEW JERSEY

SCALE: 1" = 50'      DATE: 5-15-1992

CRAIG F. REMINGTON LAND SURVEYOR LIC. NO. 23924



**REMINGTON & VERNICK ENGINEERS**  
232 KING'S HIGHWAY EAST HADDONFIELD, N.J. 08033  
(856) 795-9595, FAX (856) 795-1882  
WEB SITE ADDRESS: WWW.RVE.COM

TO SHOW CONDITIONS AS OF 06-18-2013