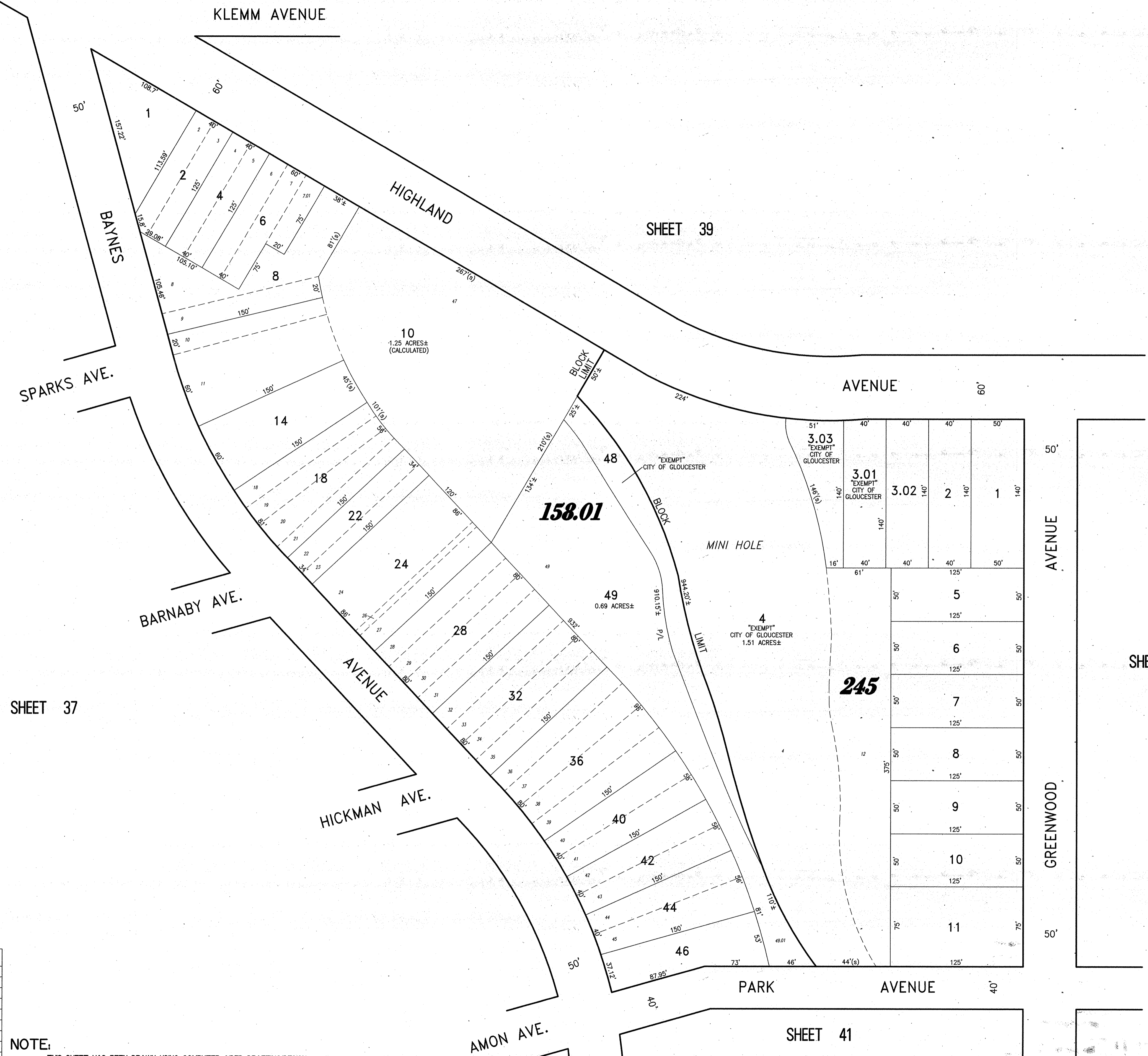


SHEET 27

SHEET 39



SHEET 37

SHEET 40

SHEET 41

REVISIONS		
11-18-2004	CRAIG F. REMINGTON	23924
12-31-2011	CRAIG F. REMINGTON	23924
01-02-2013	CRAIG F. REMINGTON	23924

NOTE:
 THIS SHEET HAS BEEN DRAWN USING COMPUTER AIDED DRAFTING/DESIGN (CAD/D) AND COORDINATE GEOMETRY (COGO).

NEW JERSEY DEPARTMENT OF TREASURY
 DIVISION OF TAXATION
 PROPERTY REVALUATION TAX MAP SECTION
 APPROVED AS A TAX MAP PURSUANT TO THE
 AUTHORITY OF N.J.S.A. 54:1-16 & N.J.S.A. 54:5B-1
 FOR THE DIRECTOR, DIVISION OF TAXATION
 Date: DEC 11 2013 SERIAL NO. 1030

TAX MAP
CITY OF GLOUCESTER
 CAMDEN COUNTY NEW JERSEY

SCALE: 1" = 50' DATE: 5-15-1992
 CRAIG F. REMINGTON LAND SURVEYOR LIC. NO. 23924

24 GA 28003800
REMINGTON & VERNICK ENGINEERS
 232 KING'S HIGHWAY EAST HADDONFIELD, N.J. 08033
 (856) 795-9595, FAX (856) 795-9862
 WEB SITE ADDRESS: WWW.RVE.COM
 TO SHOW CONDITIONS AS OF 06-18-2013