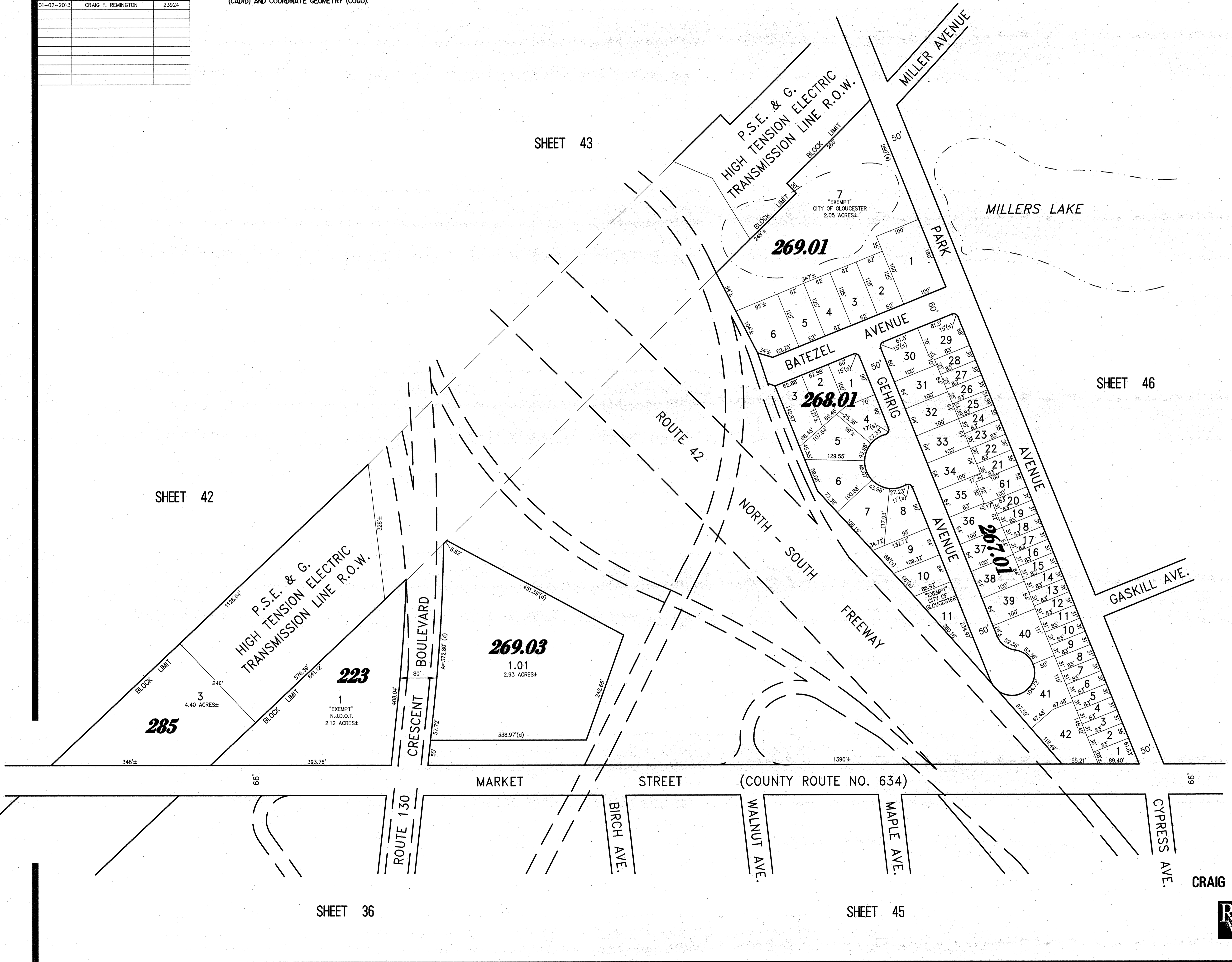
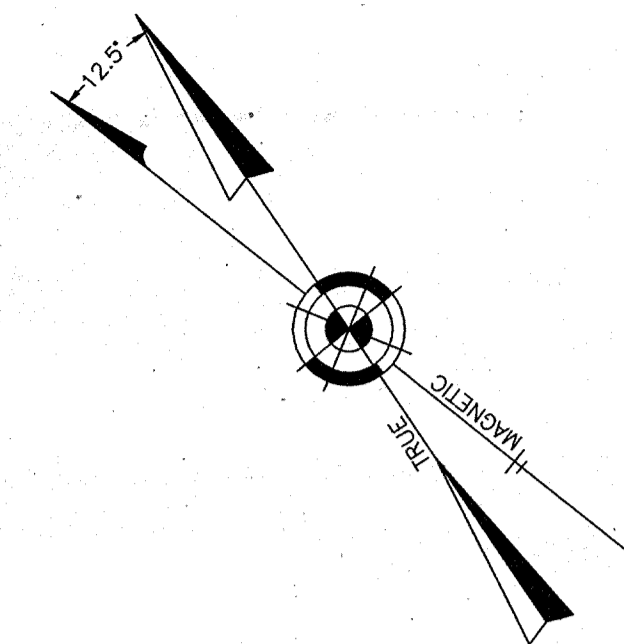


REVISIONS		
11-18-2004	CRAIG F. REMINGTON	23924
12-31-2011	CRAIG F. REMINGTON	23924
01-02-2013	CRAIG F. REMINGTON	23924

**NOTE:**  
THIS SHEET HAS BEEN DRAWN USING COMPUTER AIDED DRAFTING/DESIGN (CAD/D) AND COORDINATE GEOMETRY (COGO).



SHEET 43

SHEET 46

SHEET 42

SHEET 36

SHEET 45

NEW JERSEY DEPARTMENT OF TREASURY  
 DIVISION OF TAXATION  
 COUNTY ASSESSORS ASSOCIATION  
 COUNTY OF PLUMBERS AND PAINTERS  
 THE DIRECTOR, DIVISION OF TREASURY  
 DEC 1-1 2013

**TAX MAP**  
**CITY OF GLOUCESTER**

CAMDEN COUNTY NEW JERSEY  
 SCALE: 1" = 100' DATE: 5-15-1992

CRAIG F. REMINGTON LAND SURVEYOR LIC. NO. 23924

**REMINGTON & VERNICK ENGINEERS**  
 232 KING'S HIGHWAY EAST HADDONFIELD, N.J. 08033  
 (856) 795-9595 FAX (856) 795-1662  
 WEB SITE ADDRESS: WWW.RVE.COM

TO SHOW CONDITIONS AS OF 06-18-2013