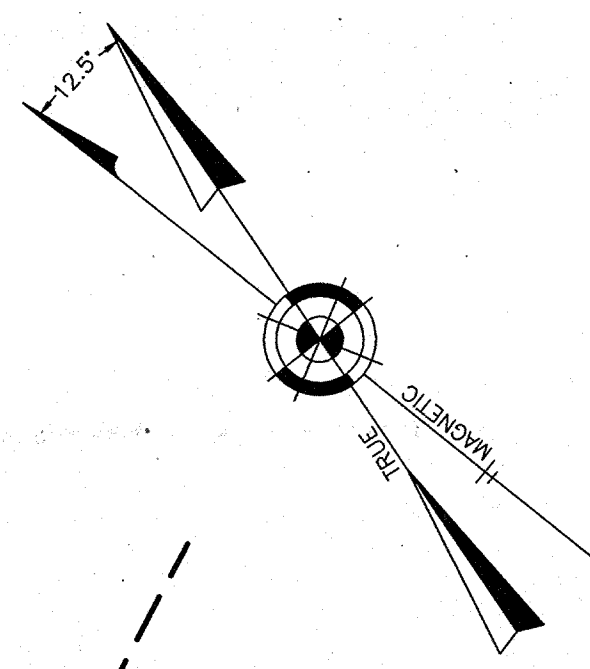
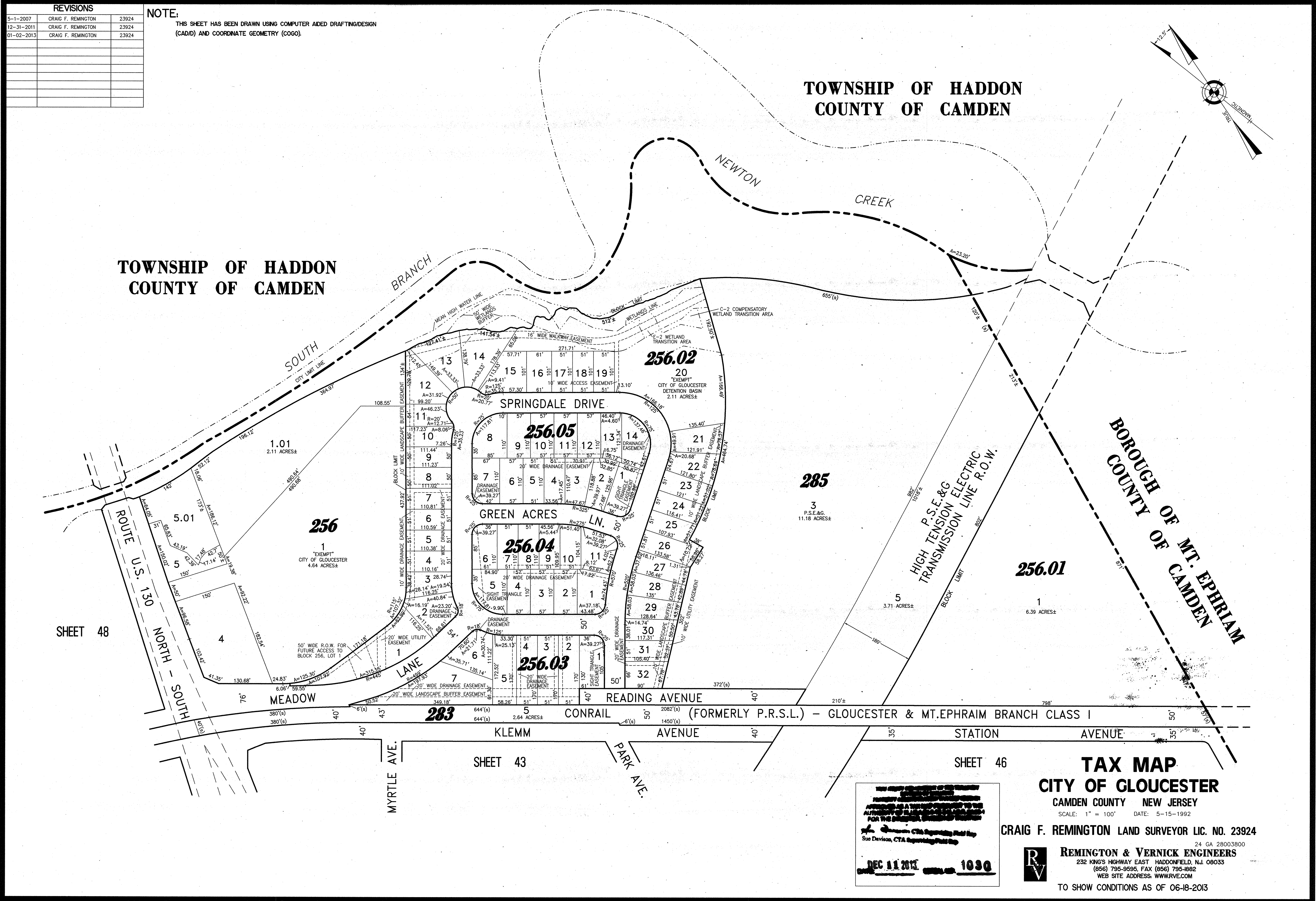


REVISIONS		
5-1-2007	CRAIG F. REMINGTON	23924
12-31-2011	CRAIG F. REMINGTON	23924
01-02-2013	CRAIG F. REMINGTON	23924

**NOTE:**  
THIS SHEET HAS BEEN DRAWN USING COMPUTER AIDED DRAFTING/DESIGN (CAD/D) AND COORDINATE GEOMETRY (COGO).



TOWNSHIP OF HADDON  
COUNTY OF CAMDEN

TOWNSHIP OF HADDON  
COUNTY OF CAMDEN

BOROUGH OF MT. EPHRAIM  
COUNTY OF CAMDEN

SHEET 48

SHEET 43

SHEET 46

**TAX MAP**  
**CITY OF GLOUCESTER**  
CAMDEN COUNTY NEW JERSEY

CRAIG F. REMINGTON LAND SURVEYOR LIC. NO. 23924

REMINGTON & VERNICK ENGINEERS  
232 KING'S HIGHWAY EAST HADDONFIELD, N.J. 08033  
(856) 795-9595, FAX (856) 795-1862  
WEB SITE ADDRESS WWW.RVVE.COM

DEC 11 2013 1030

TO SHOW CONDITIONS AS OF 06-18-2013