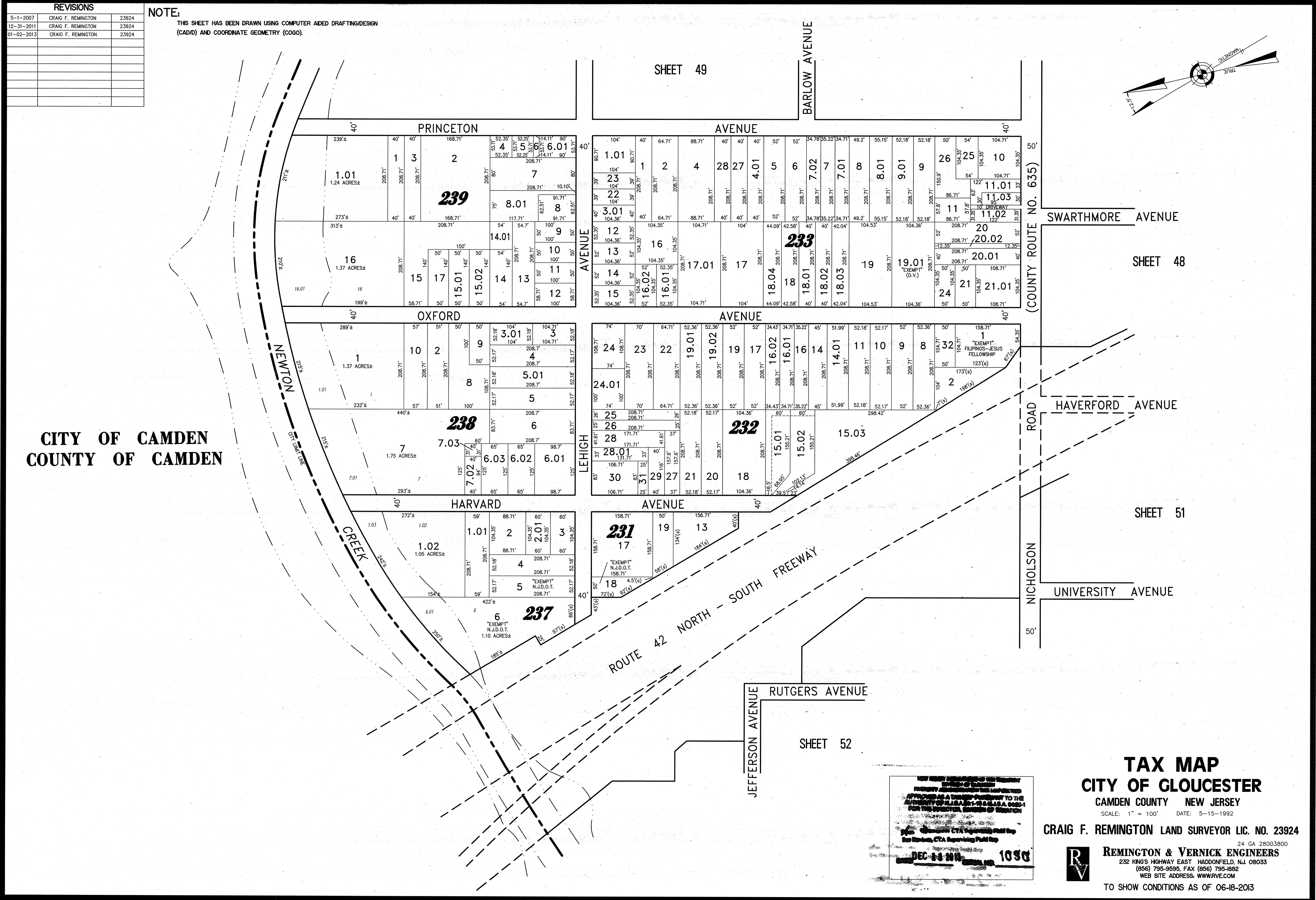
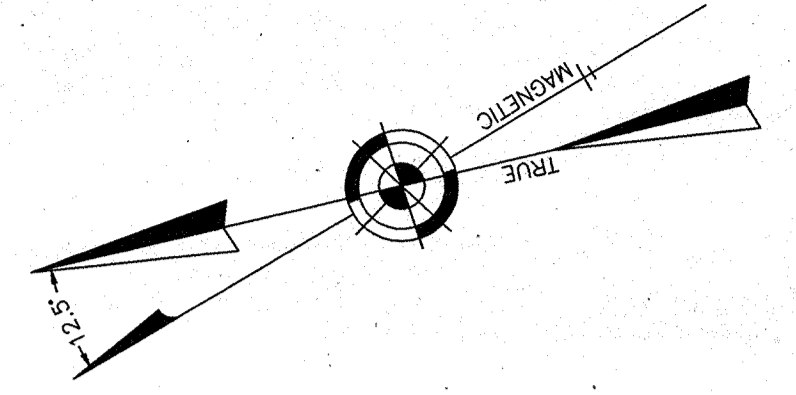


REVISIONS		
5-1-2007	CRAIG F. REMINGTON	23924
12-31-2011	CRAIG F. REMINGTON	23924
01-02-2013	CRAIG F. REMINGTON	23924

NOTE:
THIS SHEET HAS BEEN DRAWN USING COMPUTER AIDED DRAFTING/DESIGN
(CAD/D) AND COORDINATE GEOMETRY (COGO).



CITY OF CAMDEN
COUNTY OF CAMDEN

DEC 11 10 1050

TAX MAP
CITY OF GLOUCESTER
CAMDEN COUNTY NEW JERSEY
SCALE: 1" = 100' DATE: 5-15-1992
CRAIG F. REMINGTON LAND SURVEYOR LIC. NO. 23924
REMINGTON & VERNICK ENGINEERS
232 KING'S HIGHWAY EAST HADDONFIELD, N.J. 08033
(856) 795-9595, FAX (856) 795-1882
WEB SITE ADDRESS: WWW.RVE.COM
TO SHOW CONDITIONS AS OF 06-18-2013