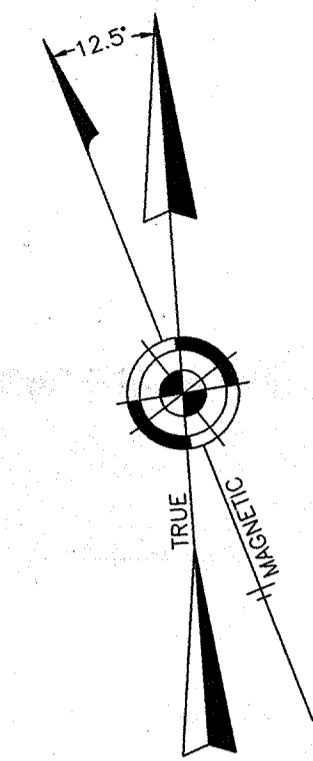
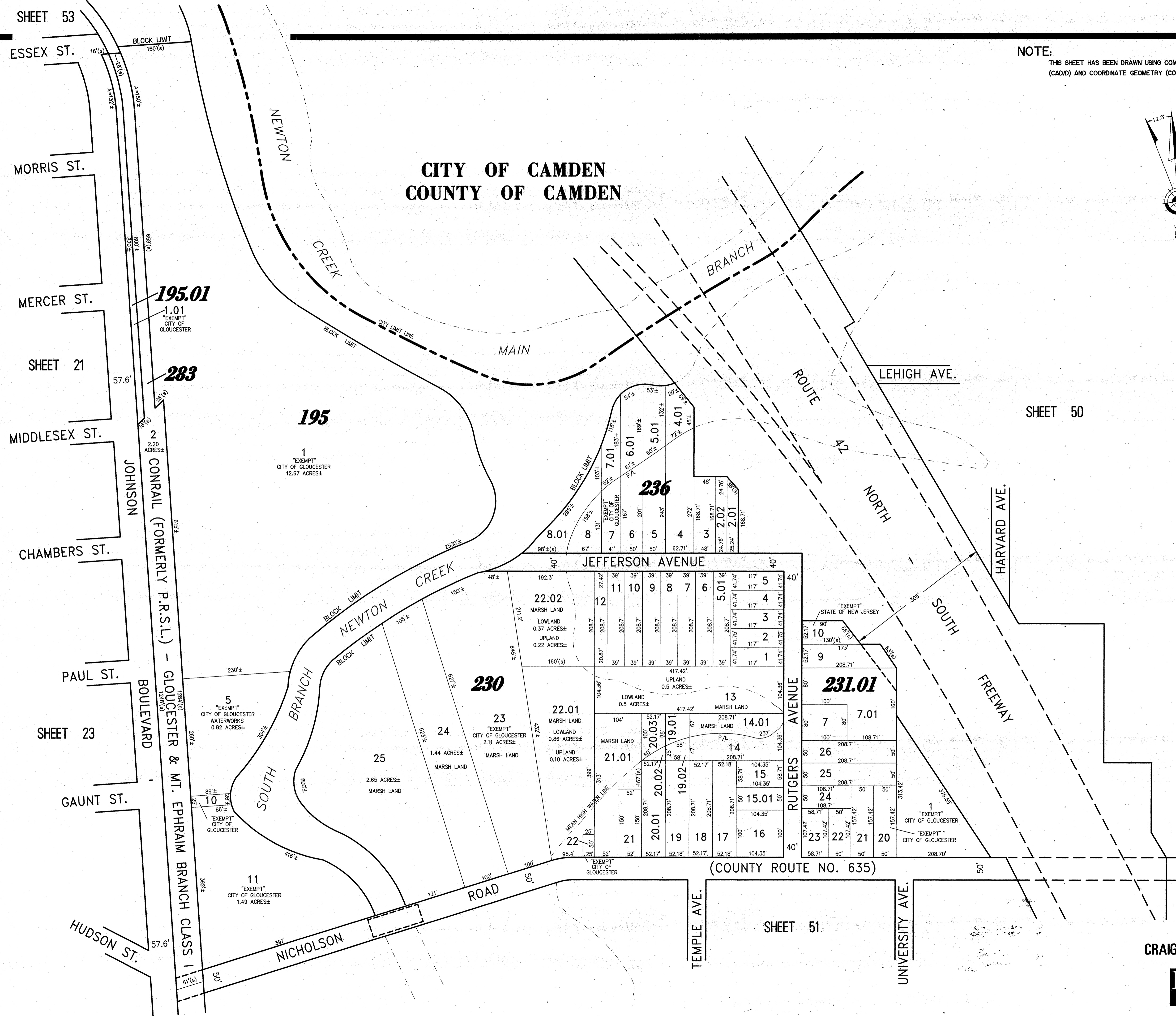


REVISIONS		
11-18-2004	CRAIG F. REMINGTON	23924
12-31-2011	CRAIG F. REMINGTON	23924
01-02-2013	CRAIG F. REMINGTON	23924

NOTE:  
THIS SHEET HAS BEEN DRAWN USING COMPUTER AIDED DRAFTING/DESIGN (CAD/D) AND COORDINATE GEOMETRY (COGO).



**CITY OF CAMDEN  
COUNTY OF CAMDEN**



THIS MAP IS A REPRODUCTION OF THE ORIGINAL MAP AS APPROVED BY THE BOARD OF TAXATION AND AS APPROVED BY THE COUNTY CLERK OF CAMDEN COUNTY, NEW JERSEY FOR THE PURPOSES OF THE TAX MAP ACT OF 1992.  
DATE: DEC 11 2013 1030

**TAX MAP  
CITY OF GLOUCESTER  
CAMDEN COUNTY NEW JERSEY**

SCALE: 1" = 100' DATE: 5-15-1992

CRAIG F. REMINGTON LAND SURVEYOR LIC. NO. 23924

24 GA 28003800  
**REMINGTON & VERNICK ENGINEERS**  
232 KING'S HIGHWAY EAST HADDONFIELD, N.J. 08033  
(856) 795-9595 FAX (856) 795-1682  
WEB SITE ADDRESS: WWW.RVE.COM

TO SHOW CONDITIONS AS OF 06-18-2013