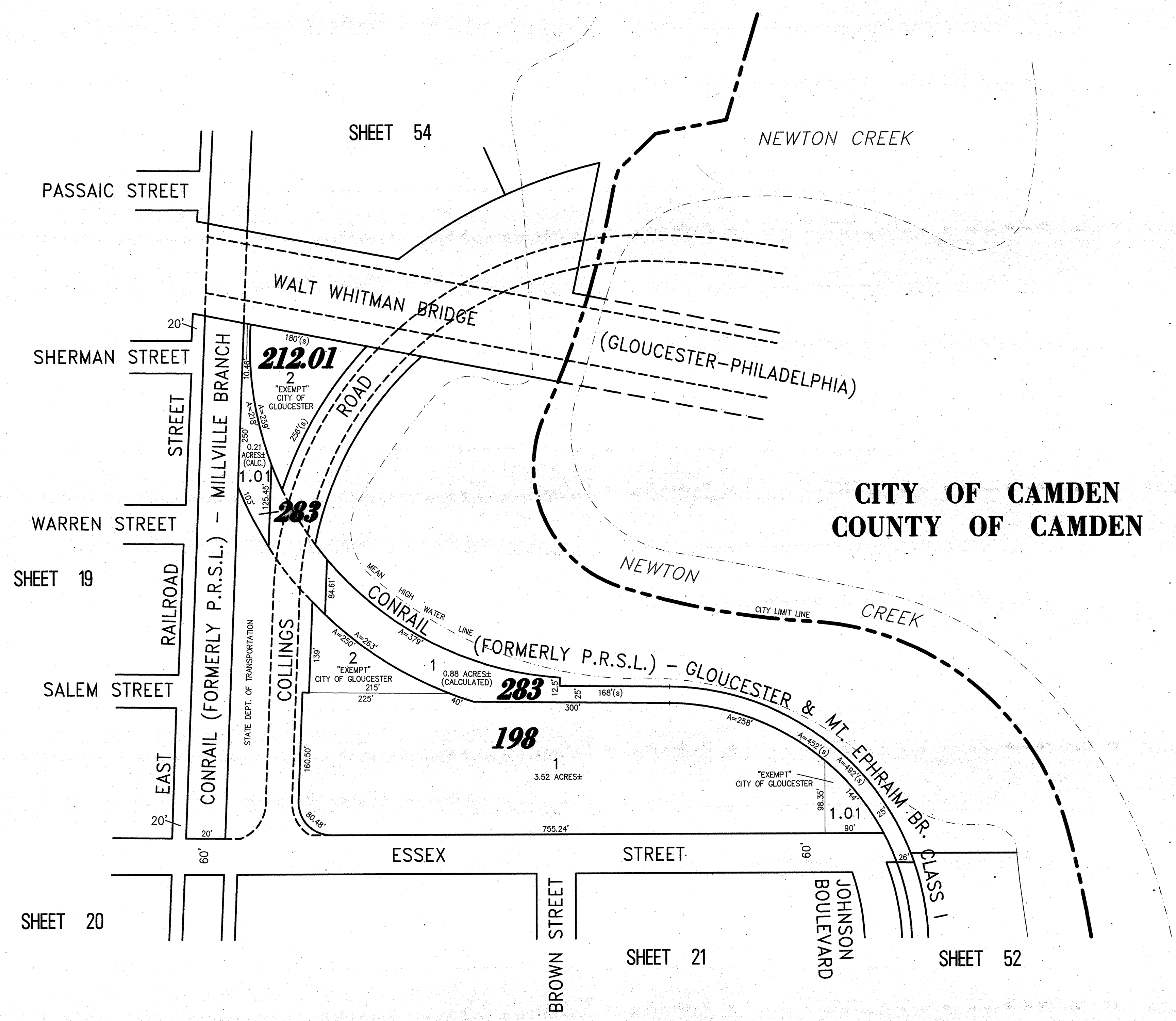
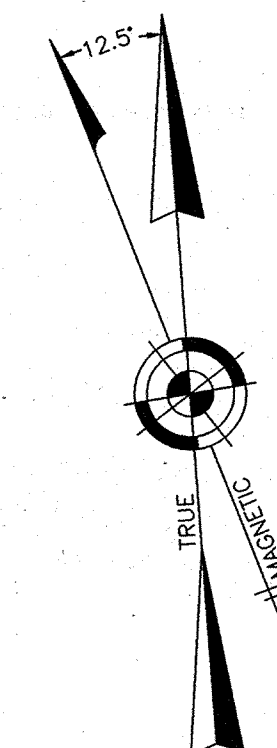


REVISIONS		
11-18-2004	CRAIG F. REMINGTON	23924
12-31-2011	CRAIG F. REMINGTON	23924
01-02-2013	CRAIG F. REMINGTON	23924

NOTE:
THIS SHEET HAS BEEN DRAWN USING COMPUTER AIDED DRAFTING/DESIGN (CAD/D) AND COORDINATE GEOMETRY (COGO).



NEW JERSEY DEPARTMENT OF THE TREASURY
DIVISION OF TAXATION
PROPERTY TAX MAPS SECTION
APPROVED AS A TAX MAP BY RESOLUTION
OF THE BOARD OF TAXATION AND REVENUE
OF THE DEPARTMENT OF TREASURY AND
FOR THE DIRECTOR, DIVISION OF TAXATION

CRAIG F. REMINGTON, CTA Supervising Field Rep
200 Davidson, CTA Supervising Field Rep

DEC 11 2013, 10:30

TAX MAP
CITY OF GLOUCESTER
CAMDEN COUNTY NEW JERSEY
SCALE: 1" = 100' DATE: 5-15-1992
CRAIG F. REMINGTON LAND SURVEYOR LIC. NO. 23924
24 GA 28003800
REMINGTON & VERNICK ENGINEERS
232 KING'S HIGHWAY EAST HADDONFIELD, N.J. 08033
(856) 795-9595, FAX (856) 795-1882
WEB SITE ADDRESS: WWW.RVE.COM
TO SHOW CONDITIONS AS OF 06-18-2013