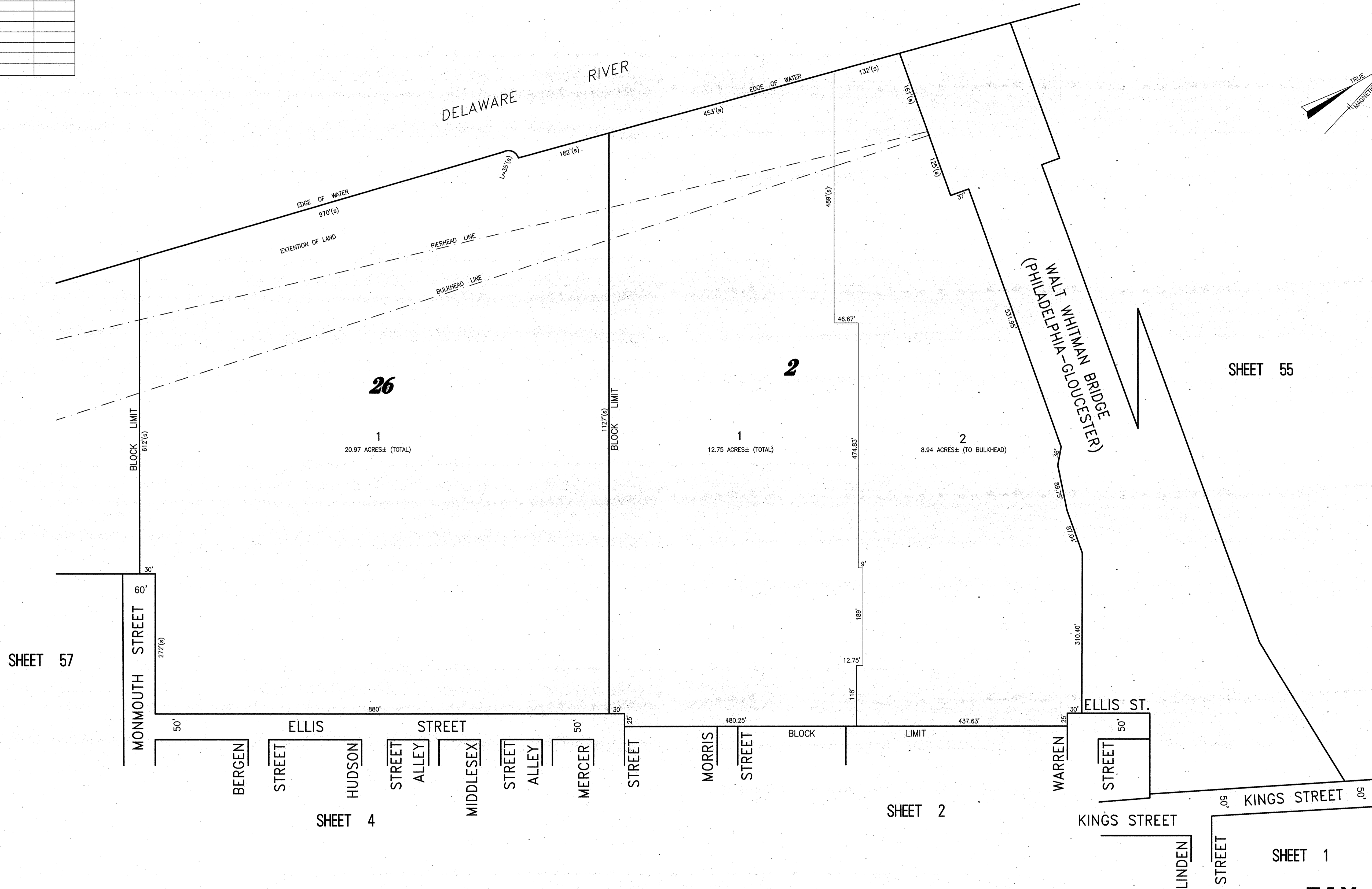
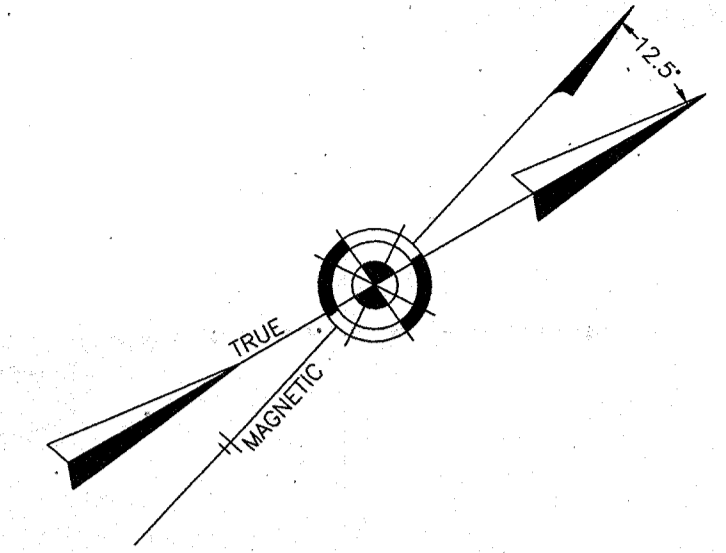


REVISIONS		
11-18-2004	CRAIG F. REMINGTON	23924
01-02-2013	CRAIG F. REMINGTON	23924

**NOTE:**  
 THIS SHEET HAS BEEN DRAWN USING COMPUTER AIDED DRAFTING/DESIGN (CAD/D) AND COORDINATE GEOMETRY (COGO).



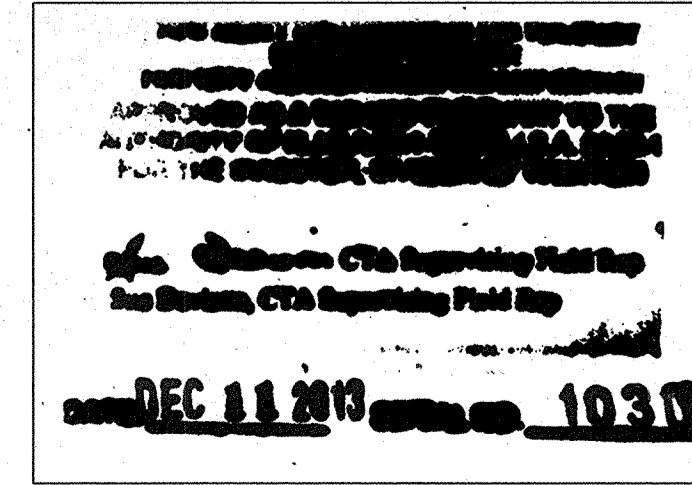
SHEET 57

SHEET 55

SHEET 4

SHEET 2

SHEET 1



**TAX MAP**  
**CITY OF GLOUCESTER**  
 CAMDEN COUNTY NEW JERSEY  
 SCALE: 1" = 100' DATE: 5-15-1992  
**CRAIG F. REMINGTON LAND SURVEYOR LIC. NO. 23924**  
 24 GA 28003800  
**REMINGTON & VERNICK ENGINEERS**  
 232 KING'S HIGHWAY EAST HADDONFIELD, N.J. 08033  
 (856) 795-9595, FAX (856) 795-1982  
 WEB SITE ADDRESS: WWW.RVCE.COM  
 TO SHOW CONDITIONS AS OF 06-18-2013