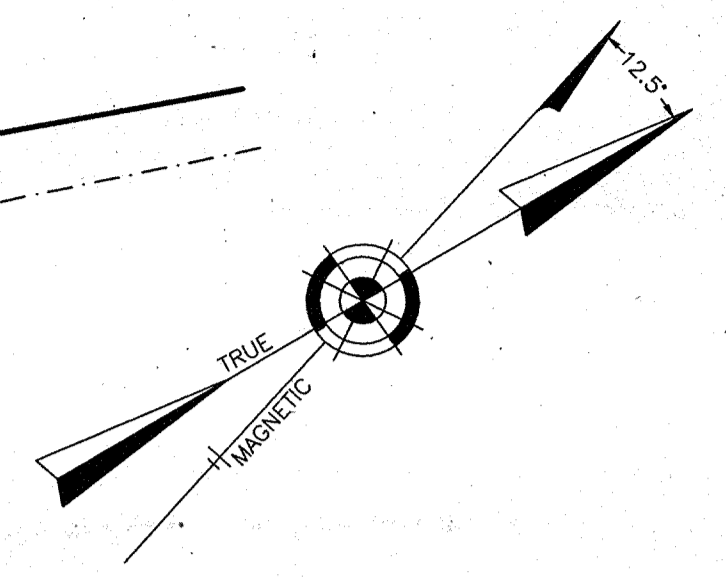
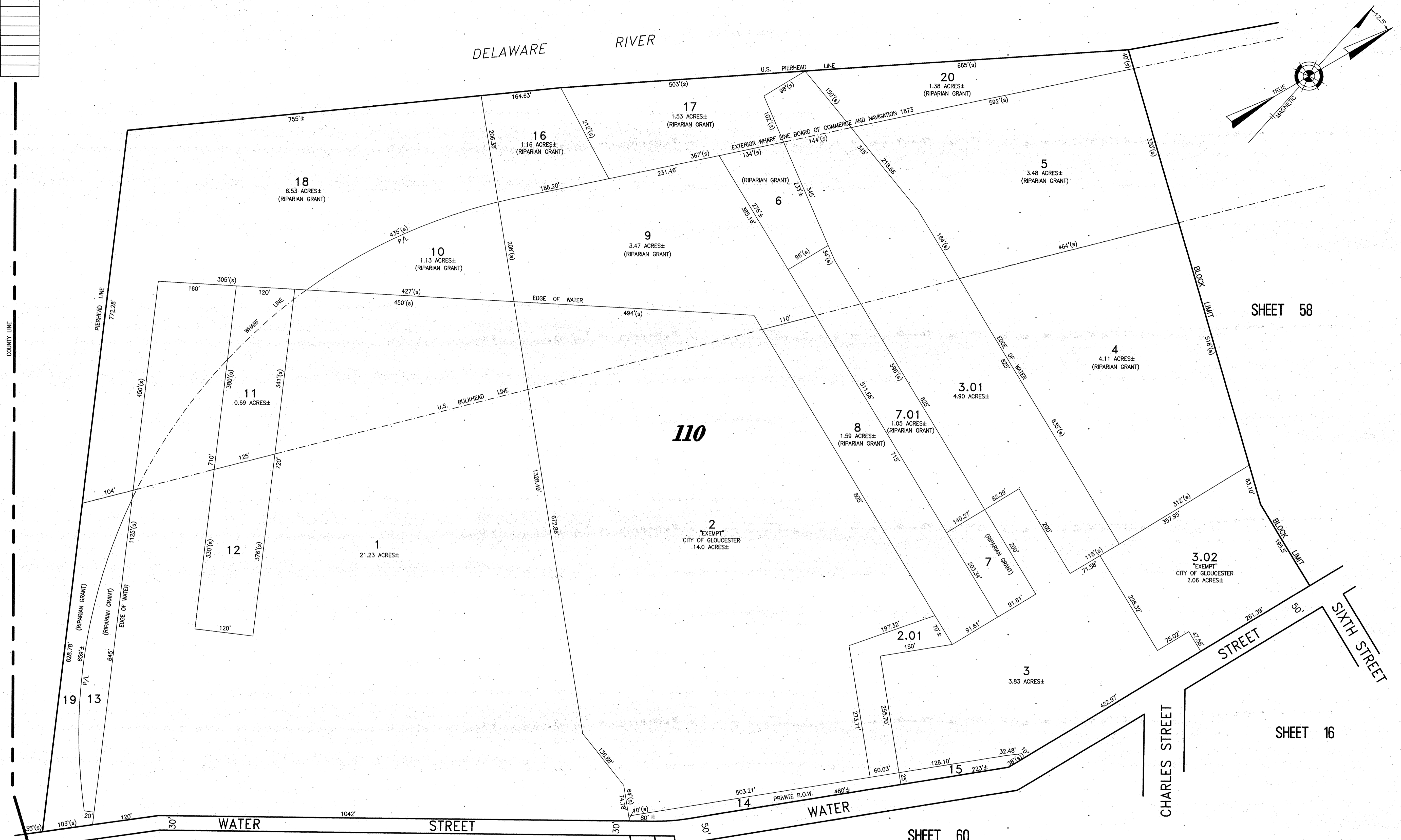


REVISIONS		
11-18-2004	CRAIG F. REMINGTON	23924
12-31-2011	CRAIG F. REMINGTON	23924
01-02-2013	CRAIG F. REMINGTON	23924

NOTE:
THIS SHEET HAS BEEN DRAWN USING COMPUTER AIDED DRAFTING/DESIGN (CAD/D) AND COORDINATE GEOMETRY (COGO).

**BOROUGH OF WESTVILLE
COUNTY OF GLOUCESTER**

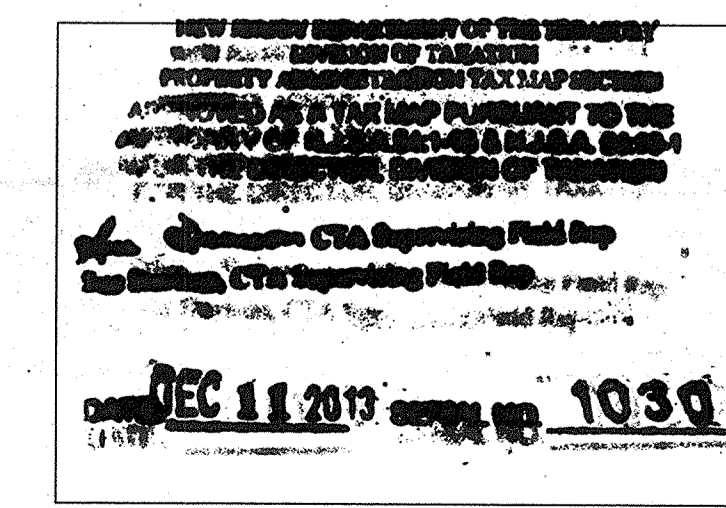


SHEET 58

SHEET 16

SHEET 61

SHEET 60



**TAX MAP
CITY OF GLOUCESTER**

CAMDEN COUNTY NEW JERSEY
SCALE: 1" = 100' DATE: 5-15-1992

CRAIG F. REMINGTON LAND SURVEYOR LIC. NO. 23924

REMINGTON & VERNICK ENGINEERS
232 KING'S HIGHWAY EAST HADDONFIELD, N.J. 08033
(856) 795-9595, FAX (856) 795-1892
WEB SITE ADDRESS: WWW.RVE.COM

TO SHOW CONDITIONS AS OF 06-18-2013