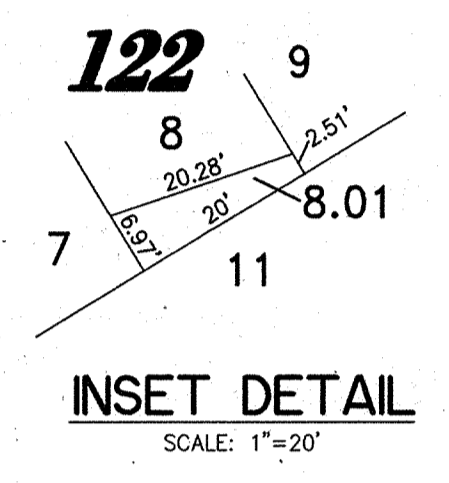
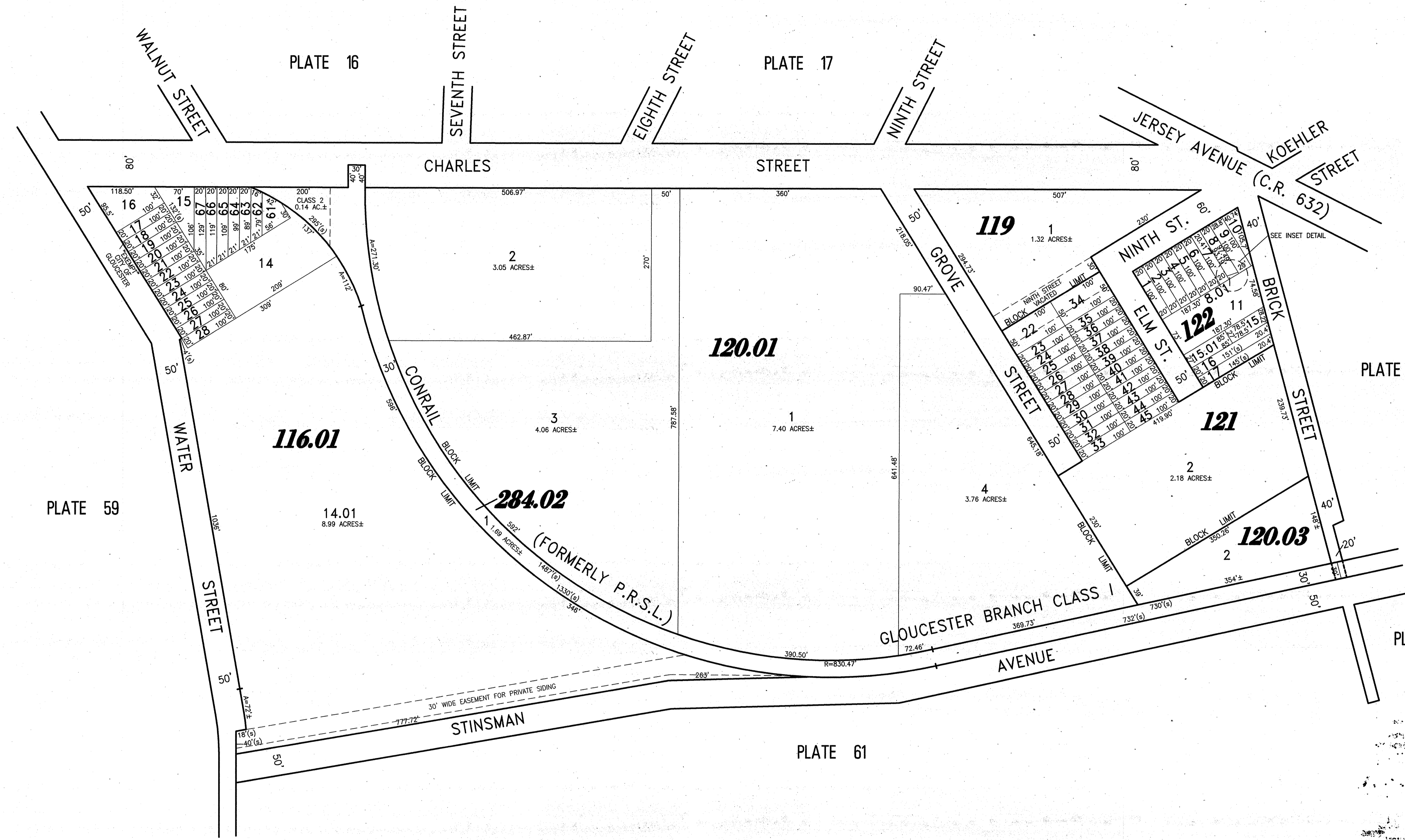
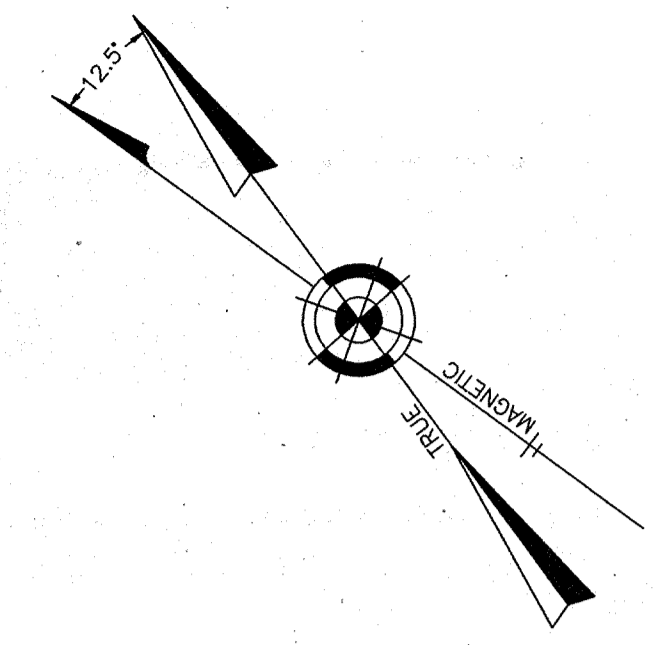


REVISIONS		
11-18-2004	CRAIG F. REMINGTON	23924
12-31-2011	CRAIG F. REMINGTON	23924
01-02-2013	CRAIG F. REMINGTON	23924

NOTE:
THIS SHEET HAS BEEN DRAWN USING COMPUTER AIDED DRAFTING/DESIGN (CAD/D) AND COORDINATE GEOMETRY (COGO).



NEW JERSEY DEPARTMENT OF TREASURY
PROPERTY TAX MAP SECTION
APPROVED AS A TAX MAP PLACEMENT TO THE
PROPERTY TAX MAP SECTION OF PLANS 23-23 & 23-24, 2020-1
FOR THE SPECIAL TAXATION OF LOT 122
BY THE BOARD OF TAXATION
DATE: 11/11/2011

TAX MAP
CITY OF GLOUCESTER
CAMDEN COUNTY NEW JERSEY
SCALE: 1" = 100' DATE: 5-15-1992

CRAIG F. REMINGTON LAND SURVEYOR LIC. NO. 23924
24 GA 28003800
REMINGTON & VERNICK ENGINEERS
232 KING'S HIGHWAY EAST HADDONFIELD, N.J. 08033
(856) 795-9555, FAX (856) 795-1682
WEB SITE ADDRESS: WWW.RVE.COM
TO SHOW CONDITIONS AS OF 06-18-2013