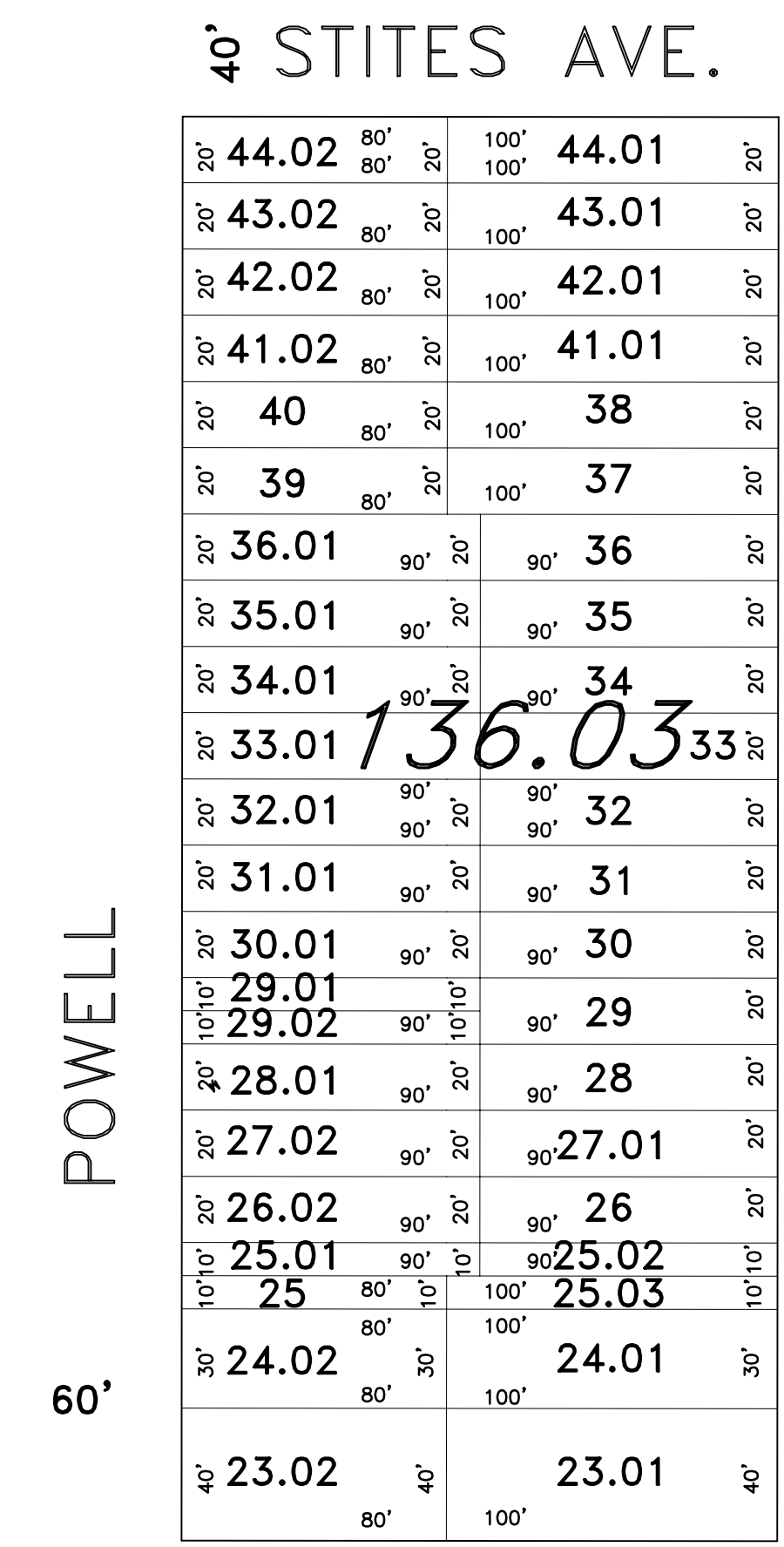
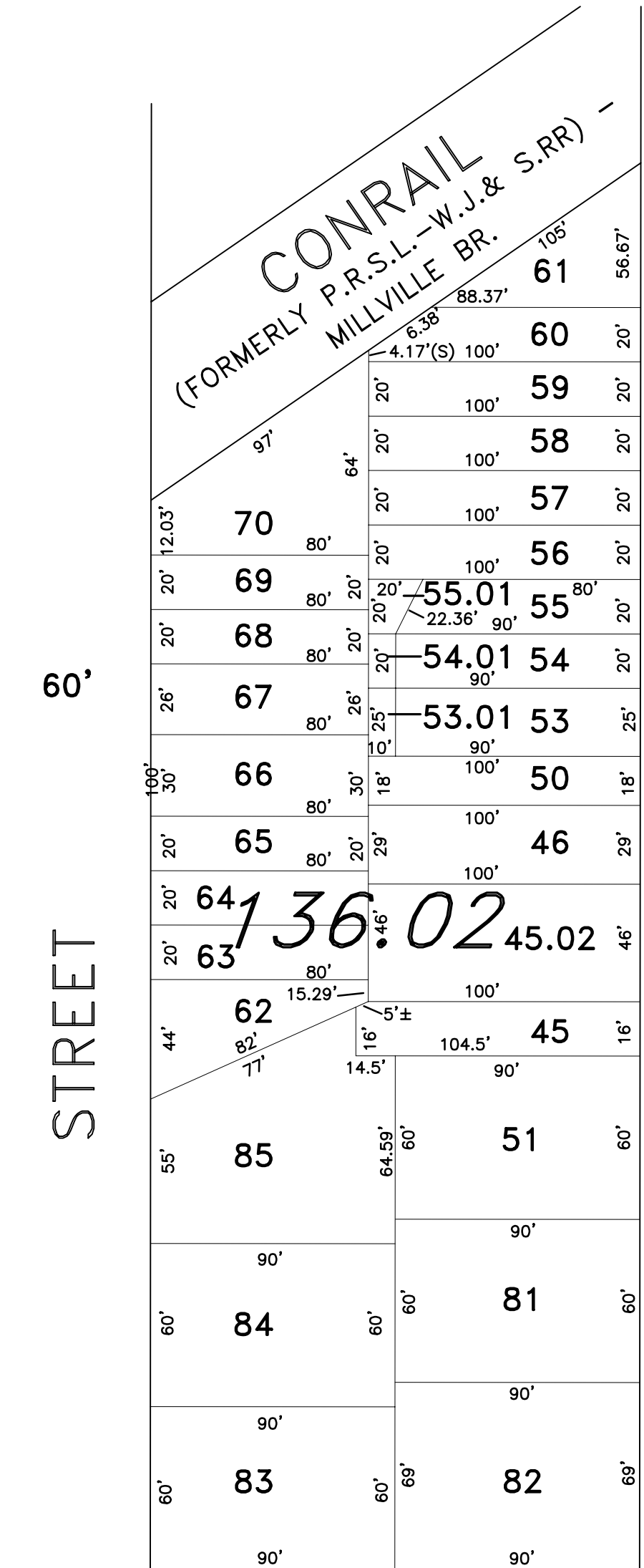
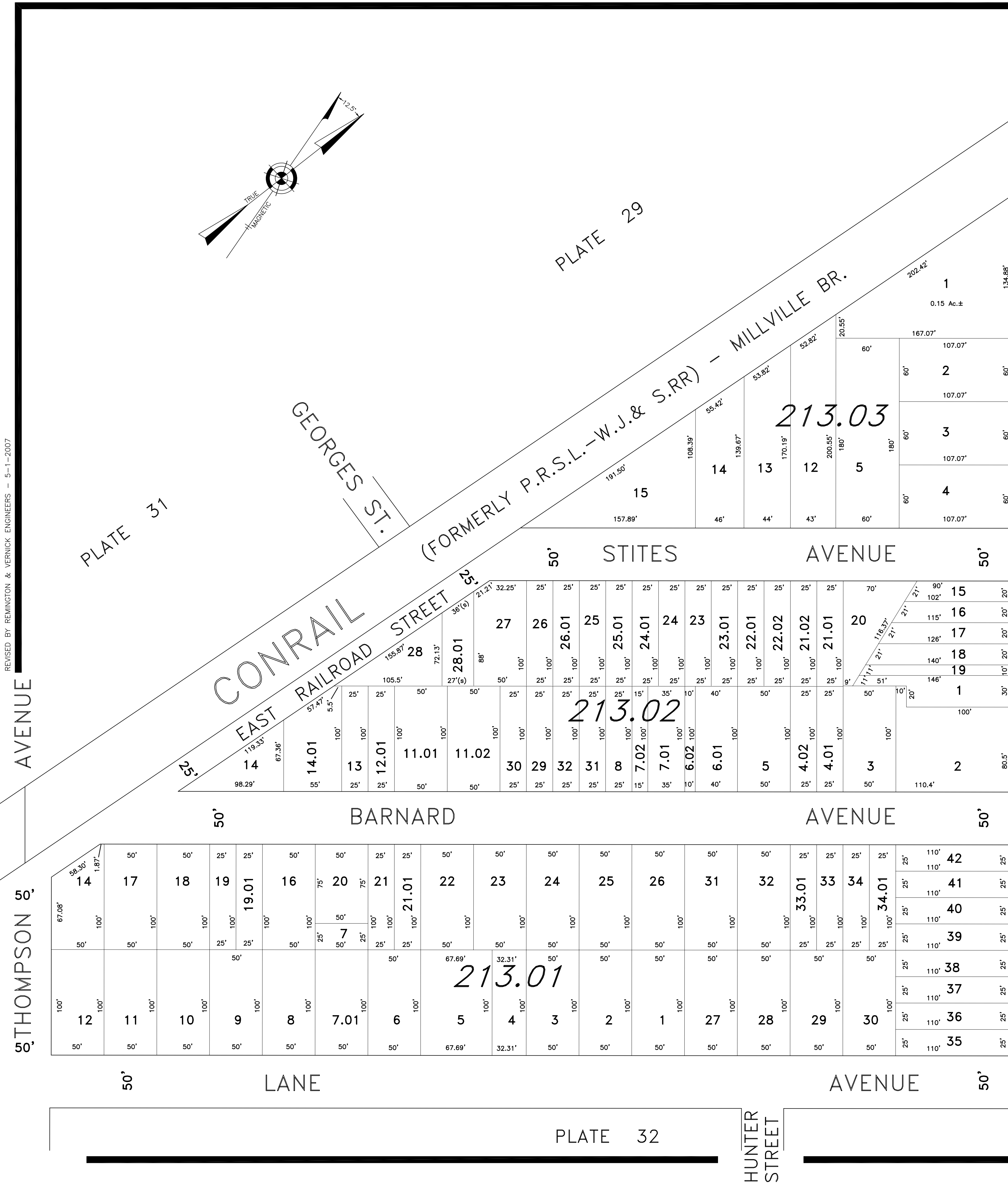
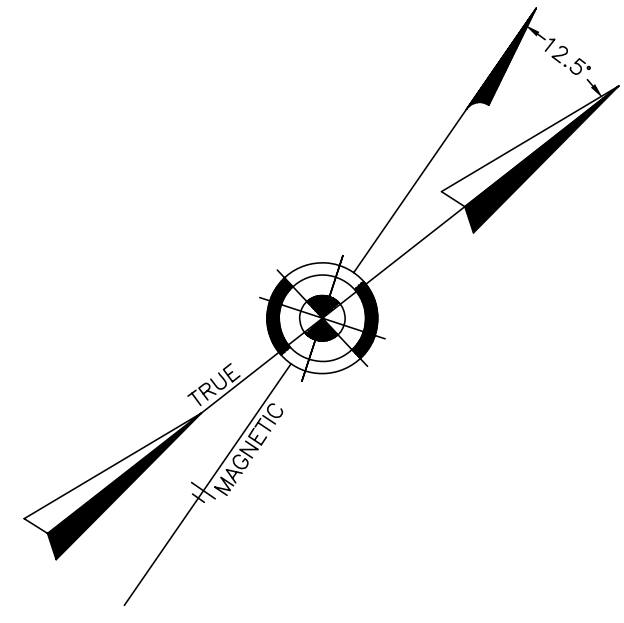


REVISED BY REMINGTON & VERNICK ENGINEERS - 5-1-2007



"THIS TAX MAP PLATE HAS BEEN DIGITALLY DRAWN USING COMPUTER-AIDED DRAFTING/DESIGN (CADD) AND COORDINATE GEOMETRY (COGO). IT IS BASED ON THE ORIGINAL DIGITALLY DRAWN TAX MAP PLATE BEARING THE OFFICIAL NEW JERSEY DIVISION OF TAXATION APPROVAL STAMP WITH APPROVAL DATE 3-24-1994, SERIAL NUMBER 759 AND SIGNATURE OF SIGNER IVAN HAFKOWYCZ P.E. L.S. THIS TAX MAP PLATE HAS BEEN DIGITALLY UPDATED TO REFLECT CONDITIONS AS OF 5-1-2007. THE ORIGINAL DRAWN TAX MAP PLATE WITH THE OFFICIAL APPROVAL STAMP IS ON FILE WITH REMINGTON AND VERNICK ENGINEERS."

TAX MAP CITY OF GLOUCESTER CAMDEN COUNTY NEW JERSEY SCALE: 1" = 50' DATE: 5-15-1992 CRAIG F. REMINGTON LAND SURVEYOR LIC. NO. 23924 REMINGTON & VERNICK ENGINEERS 232 KING'S HIGHWAY EAST HADDONFIELD, N.J. 08033 (856) 795-9595, FAX (856) 795-1882 WEB SITE ADDRESS WWW.RVE.COM