

PLATE 58

DELAWARE RIVER

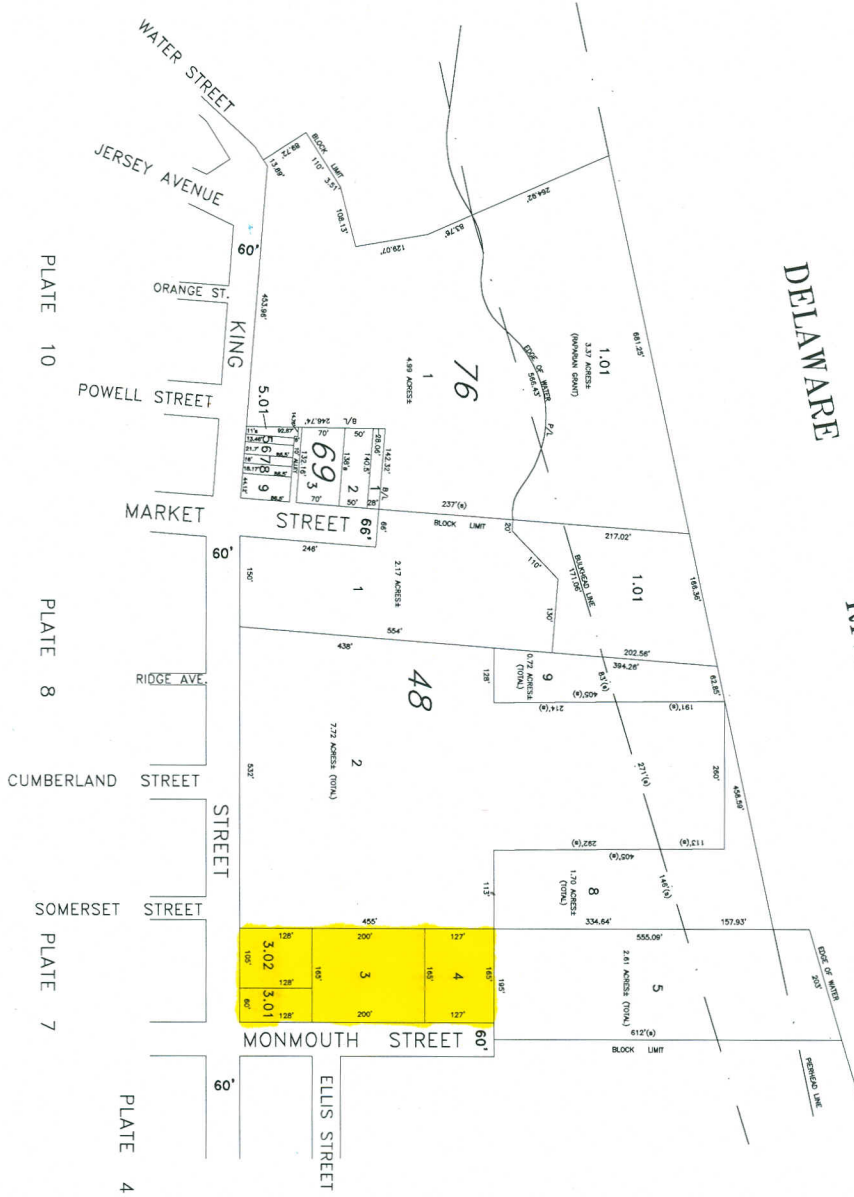
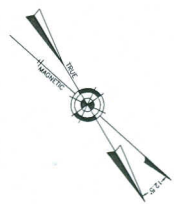


PLATE 56



THIS TAX MAP PLATE HAS BEEN DIGITALLY
 DRAWN USING COMPUTER-AIDED DRAWING/DESIGN
 SOFTWARE. THE ORIGINAL DIGITALLY DRAWN
 MAP IS BASED ON THE ORIGINAL DIGITALLY DRAWN
 MAP. THE ORIGINAL DIGITALLY DRAWN MAP
 WAS APPROVED BY THE BOARD OF TAXATION APPROVAL STAFF
 WITH APPROVAL DATE 3-24-1994. THIS TAX MAP
 WAS APPROVED BY THE BOARD OF TAXATION APPROVAL STAFF
 WITH APPROVAL DATE 11-18-2004. THE ORIGINAL
 DRAWING WAS MADE BY THE OFFICE OF THE COUNTY
 ENGINEER AND SURVEYOR. THE ORIGINAL
 DRAWING WAS MADE BY THE OFFICE OF THE COUNTY
 ENGINEER AND SURVEYOR.

TAX MAP
CITY OF GLOUCESTER
 CAMDEN COUNTY NEW JERSEY
 CRAIG F. REMINGTON LAND SURVEYOR LIC. NO. 23924
 SCALE: 1" = 100'
 DATE: 5-15-1992
 REMINGTON & VERNICK ENGINEERS
 232 PATRICKSON AVENUE
 NEW BRITAIN, CONNECTICUT 06053
 24 CA 33003000

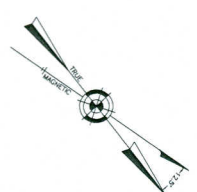


PLATE 56

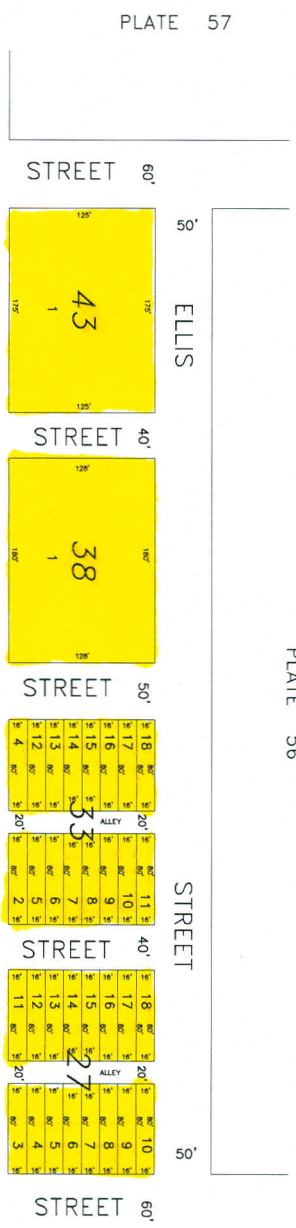


PLATE 57

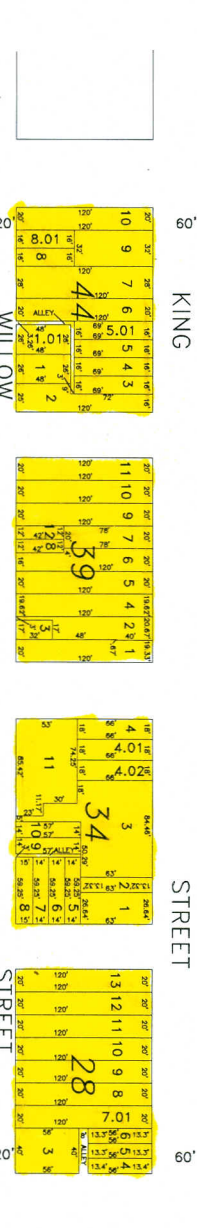


PLATE 7

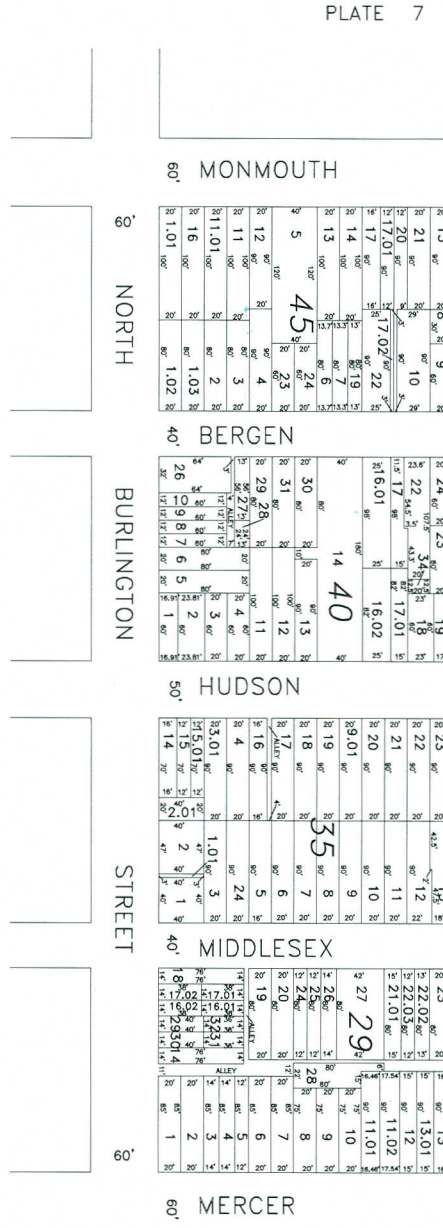


PLATE 5



PLATE 2



THIS TAX MAP PLATE HAS BEEN ORIGINALLY PREPARED BY THE CAMDEN COUNTY (CDD) AND COORDINATE GEOMETRY (CGO) DEPARTMENT. THE TAX MAP PLATE NUMBERING SYSTEM IS BASED ON THE OFFICIAL NEW JERSEY TAX MAP PLATE NUMBERING SYSTEM. THE TAX MAP PLATE NUMBERING SYSTEM IS BASED ON THE OFFICIAL NEW JERSEY TAX MAP PLATE NUMBERING SYSTEM. THE TAX MAP PLATE NUMBERING SYSTEM IS BASED ON THE OFFICIAL NEW JERSEY TAX MAP PLATE NUMBERING SYSTEM.

TAX MAP
CITY OF GLOUCESTER
 CAMDEN COUNTY NEW JERSEY
 SCALE: 1" = 50'
 DATE: 5-15-1992
CRAIG F. REMINGTON LAND SURVEYOR LIC. NO. 23924
REMINGTON & YERNICK ENGINEERS
 232 KING STREET EAST, MONROEVILLE, PA 15063
 (412) 371-2000 FAX (412) 371-2002