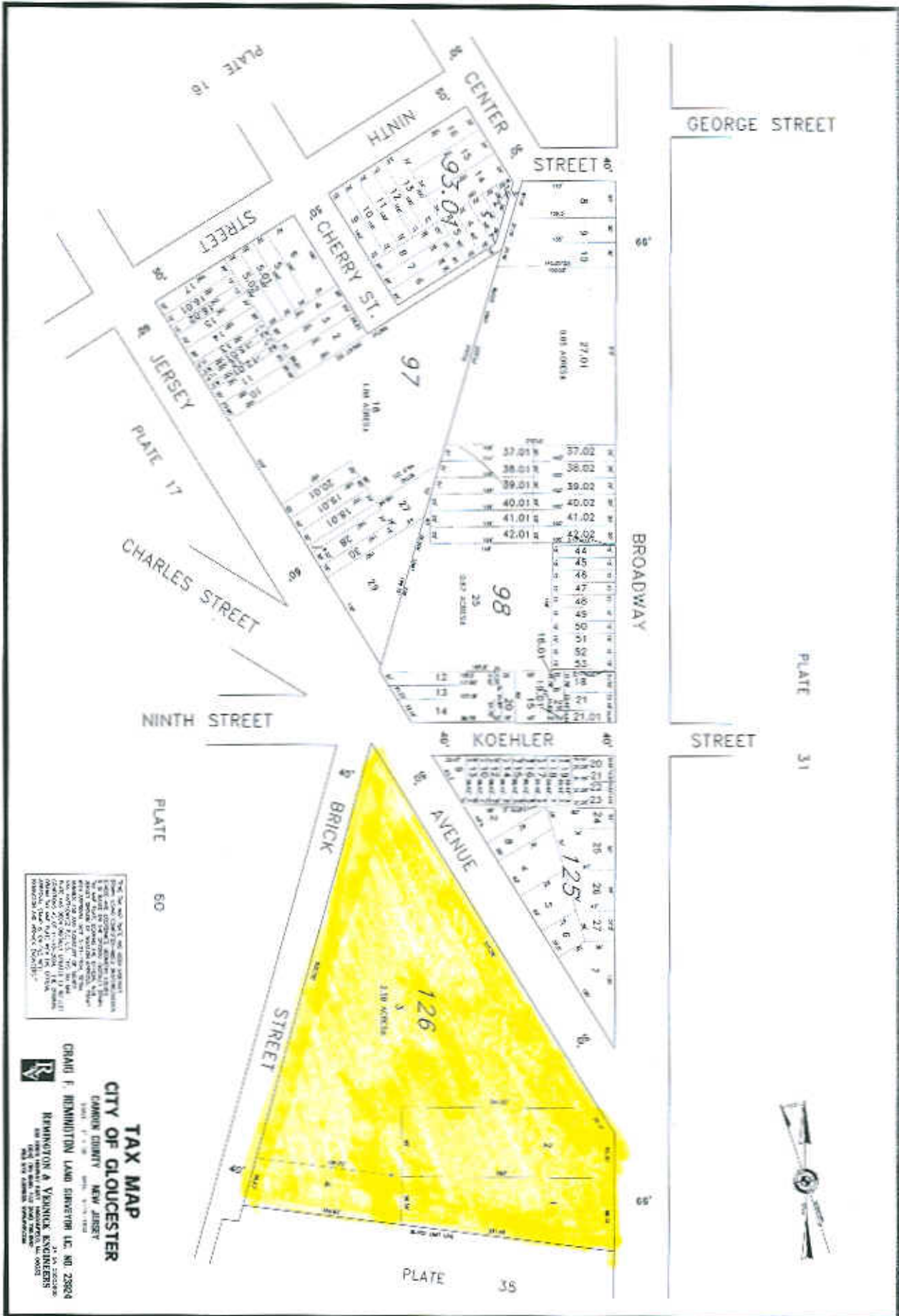


THIS MAP IS NOT TO BE USED FOR THE PURPOSES OF DETERMINING PROPERTY TAXES. THE CITY OF CLUCCESTER OFFERS THIS MAP AS A SERVICE TO THE PUBLIC. THE CITY OF CLUCCESTER IS NOT RESPONSIBLE FOR ANY ERRORS OR OMISSIONS. THE CITY OF CLUCCESTER IS NOT RESPONSIBLE FOR ANY DAMAGES, INCLUDING CONSEQUENTIAL DAMAGES, ARISING FROM THE USE OF THIS MAP. THE CITY OF CLUCCESTER IS NOT RESPONSIBLE FOR ANY DAMAGES, INCLUDING CONSEQUENTIAL DAMAGES, ARISING FROM THE USE OF THIS MAP.

**TAX MAP**  
**CITY OF CLUCCESTER**  
 CAMDEN COUNTY NEW JERSEY  
 DATE: 11-15-2023  
 DRAWN BY: J. J. SULLIVAN  
 CHECKED BY: J. J. SULLIVAN  
 DESIGNED BY: J. J. SULLIVAN  
 DATE: 11-15-2023  
 DRAWN BY: J. J. SULLIVAN  
 CHECKED BY: J. J. SULLIVAN  
 DESIGNED BY: J. J. SULLIVAN  
 DATE: 11-15-2023



THE TAX MAP IS THE PROPERTY OF THE CITY OF GLOUCESTER, NEW JERSEY. IT IS A PUBLIC RECORD AND IS SUBJECT TO THE RIGHT OF THE CITY TO REVISION. THE CITY OF GLOUCESTER, NEW JERSEY, IS NOT RESPONSIBLE FOR THE ACCURACY OF THE INFORMATION CONTAINED HEREIN. THE CITY OF GLOUCESTER, NEW JERSEY, IS NOT RESPONSIBLE FOR THE ACCURACY OF THE INFORMATION CONTAINED HEREIN. THE CITY OF GLOUCESTER, NEW JERSEY, IS NOT RESPONSIBLE FOR THE ACCURACY OF THE INFORMATION CONTAINED HEREIN.

**TAX MAP**  
**CITY OF GLOUCESTER**  
 CAMDEN COUNTY NEW JERSEY

GRAIG F. HENNINGTON LAND SURVEYOR L.C. NO. 23894  
 REMINGTON & VANNOCK ENGINEERS  
 1000 N. 10TH ST. SUITE 200  
 PHILADELPHIA, PA. 19107

PLATE 34

PLATE 36

PLATE 31

PLATE 18

PLATE 60

PLATE 61

CONRAIL

PROPERTY - P.A.S.L. - W.J.A. S.M.D. - MIXTURE BR.

284

CLASS 1



BROADWAY

CREEK

CONRAIL (FORMER P.A.S.L. - W.J.A. S.M.D.) - DISPOSED BR.  
STINSMAN AVENUE



LITTLE TIMBER

CITY LINE

BOROUGH OF BROOKLAWN



THIS TAX MAP WAS PREPARED BY THE BOROUGH OF BROOKLAWN ENGINEERS AND SURVEYORS IN ACCORDANCE WITH THE PROVISIONS OF THE TAX MAP ACT, P.L. 1998-11, AS AMENDED. THE BOROUGH ENGINEERS AND SURVEYORS HAVE CONDUCTED A VISUAL INSPECTION OF THE PROPERTY AND HAVE FOUND THAT THE INFORMATION PROVIDED IS TRUE AND CORRECT. THE BOROUGH ENGINEERS AND SURVEYORS DO NOT WARRANT THE ACCURACY OF THE INFORMATION PROVIDED.

**TAX MAP**  
**CITY OF GLOUCESTER**  
 CAMDEN COUNTY NEW JERSEY  
 DRAWN BY: REMINGTON LAND SURVEYORS L.P. NO. 28214  
 REMINGTON & VERNOCK ENGINEERS  
 1000 W. 10TH STREET, SUITE 100  
 WASHINGTON, NJ 07080



# BOROUGH OF WESTVILLE

## BIG TIMBER CREEK

GLoucester COUNTY  
Deween COUNTY

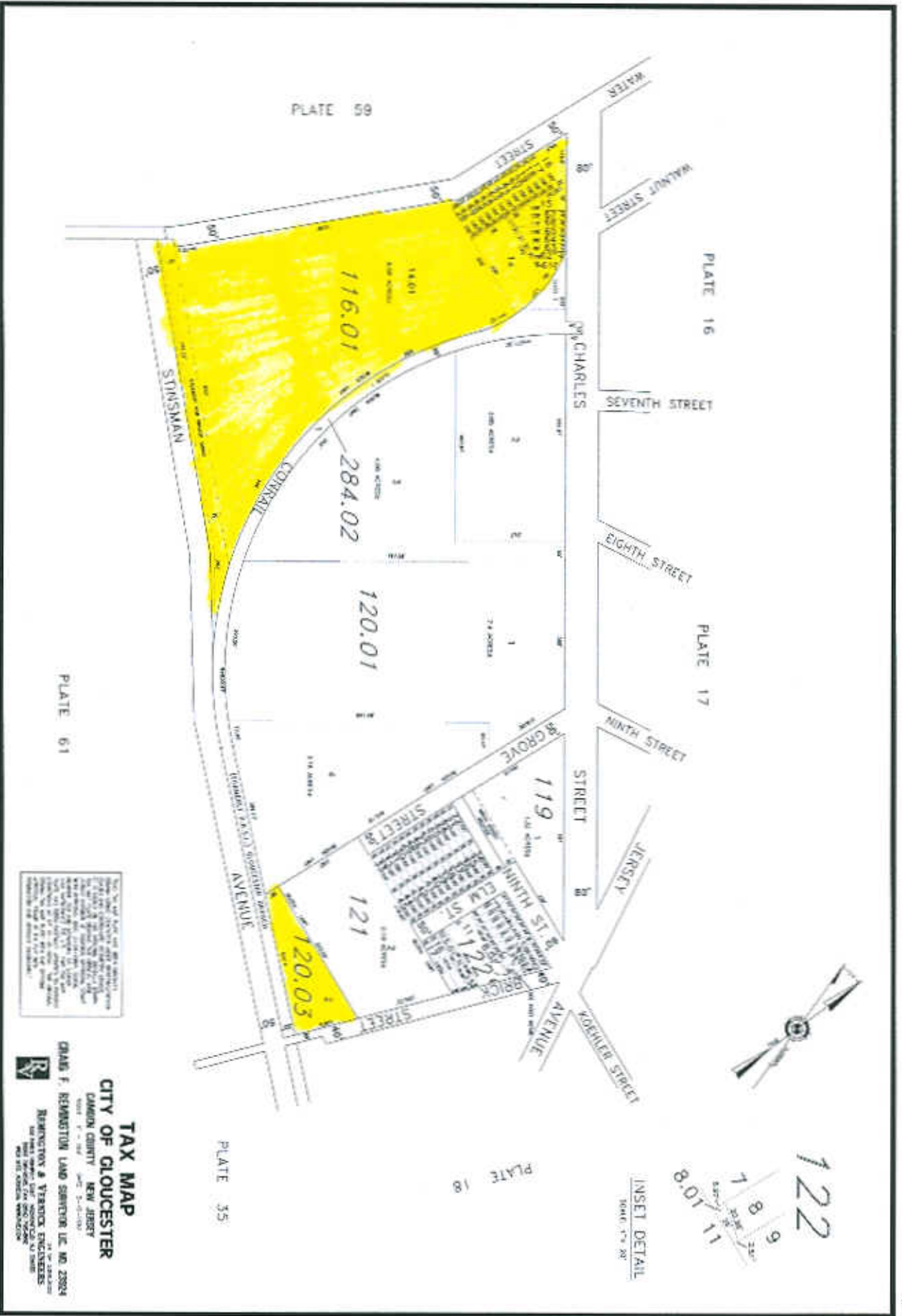
DELAWARE RIVER

PLATE 61

THIS MAP IS A PART OF THE TAX MAP OF THE BOROUGH OF WESTVILLE, NEW JERSEY, AND IS SUBJECT TO THE CITY OF GLOUCESTER, NEW JERSEY, TAX MAP ACT OF 1975, AS AMENDED. THE CITY OF GLOUCESTER, NEW JERSEY, IS THE OFFICIAL MAPPER OF THIS MAP. THE CITY OF GLOUCESTER, NEW JERSEY, IS NOT RESPONSIBLE FOR ANY ERRORS OR OMISSIONS IN THIS MAP. THE CITY OF GLOUCESTER, NEW JERSEY, IS NOT RESPONSIBLE FOR ANY CHANGES IN THE BOUNDARIES OF THE BOROUGH OF WESTVILLE, NEW JERSEY, OR IN THE BOUNDARIES OF THE CITY OF GLOUCESTER, NEW JERSEY, OR IN THE BOUNDARIES OF THE DELAWARE RIVER.

**TAX MAP**  
**CITY OF GLOUCESTER**  
CAMDEN COUNTY NEW JERSEY  
GRANG F. REMINGTON LAND SURVEYOR INC. NO. 23324  
REMINGTON & YERGEN ENGINEERS  
100 N. 2ND ST. SUITE 200  
CAMDEN, NJ 08102  
TEL: 856-965-1234





THIS MAP WAS MADE BY THE CITY ENGINEER AND THE CITY CLERK OF THE CITY OF GLOUCESTER, NEW JERSEY, IN ACCORDANCE WITH THE ACT OF APRIL 15, 1907, AS AMENDED BY THE ACT OF APRIL 15, 1911, AND THE ACT OF APRIL 15, 1913, AND THE ACT OF APRIL 15, 1915, AND THE ACT OF APRIL 15, 1917, AND THE ACT OF APRIL 15, 1919, AND THE ACT OF APRIL 15, 1921, AND THE ACT OF APRIL 15, 1923, AND THE ACT OF APRIL 15, 1925, AND THE ACT OF APRIL 15, 1927, AND THE ACT OF APRIL 15, 1929, AND THE ACT OF APRIL 15, 1931, AND THE ACT OF APRIL 15, 1933, AND THE ACT OF APRIL 15, 1935, AND THE ACT OF APRIL 15, 1937, AND THE ACT OF APRIL 15, 1939, AND THE ACT OF APRIL 15, 1941, AND THE ACT OF APRIL 15, 1943, AND THE ACT OF APRIL 15, 1945, AND THE ACT OF APRIL 15, 1947, AND THE ACT OF APRIL 15, 1949, AND THE ACT OF APRIL 15, 1951, AND THE ACT OF APRIL 15, 1953, AND THE ACT OF APRIL 15, 1955, AND THE ACT OF APRIL 15, 1957, AND THE ACT OF APRIL 15, 1959, AND THE ACT OF APRIL 15, 1961, AND THE ACT OF APRIL 15, 1963, AND THE ACT OF APRIL 15, 1965, AND THE ACT OF APRIL 15, 1967, AND THE ACT OF APRIL 15, 1969, AND THE ACT OF APRIL 15, 1971, AND THE ACT OF APRIL 15, 1973, AND THE ACT OF APRIL 15, 1975, AND THE ACT OF APRIL 15, 1977, AND THE ACT OF APRIL 15, 1979, AND THE ACT OF APRIL 15, 1981, AND THE ACT OF APRIL 15, 1983, AND THE ACT OF APRIL 15, 1985, AND THE ACT OF APRIL 15, 1987, AND THE ACT OF APRIL 15, 1989, AND THE ACT OF APRIL 15, 1991, AND THE ACT OF APRIL 15, 1993, AND THE ACT OF APRIL 15, 1995, AND THE ACT OF APRIL 15, 1997, AND THE ACT OF APRIL 15, 1999, AND THE ACT OF APRIL 15, 2001, AND THE ACT OF APRIL 15, 2003, AND THE ACT OF APRIL 15, 2005, AND THE ACT OF APRIL 15, 2007, AND THE ACT OF APRIL 15, 2009, AND THE ACT OF APRIL 15, 2011, AND THE ACT OF APRIL 15, 2013, AND THE ACT OF APRIL 15, 2015, AND THE ACT OF APRIL 15, 2017, AND THE ACT OF APRIL 15, 2019, AND THE ACT OF APRIL 15, 2021, AND THE ACT OF APRIL 15, 2023.

**TAX MAP**  
**CITY OF GLOUCESTER**  
 CAMDEN COUNTY NEW JERSEY  
 GRAB F. REMINGTON LAND SURVEYOR, INC. NO. 23804  
 REMINGTON & VERDECK ENGINEERS  
 1400 MARKET STREET, SUITE 200  
 PHILADELPHIA, PA 19102  
 215-562-1000



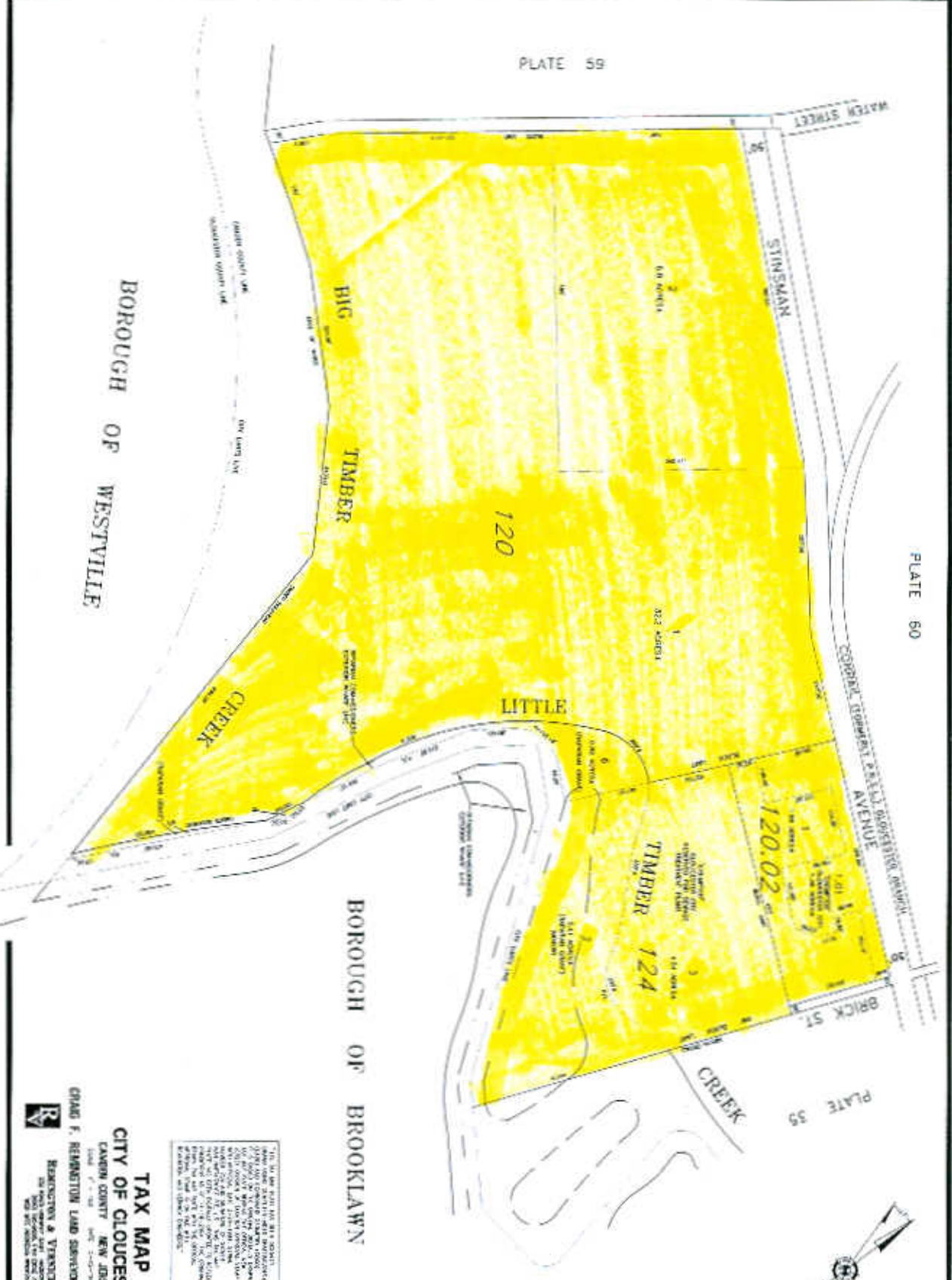
PLATE 59

PLATE 60

PLATE 59

BOROUGH OF WESTVILLE

BOROUGH OF BROOKLAWN



THIS MAP WAS FILED FOR THE BOROUGH OF WESTVILLE AND THE BOROUGH OF BROOKLAWN IN THE OFFICE OF THE CLERK OF CAMDEN COUNTY, NEW JERSEY, ON APRIL 15, 2004. THE MAP WAS PREPARED BY CHAD F. REMINGTON & VERNICE ENGINEERS, INC. ON APRIL 15, 2004. THE MAP WAS PREPARED FROM AERIAL PHOTOGRAPHS AND SURVEY DATA. THE MAP IS NOT TO BE USED FOR ANY OTHER PURPOSES WITHOUT THE WRITTEN CONSENT OF CHAD F. REMINGTON & VERNICE ENGINEERS, INC.

**TAX MAP**  
**CITY OF CLOUCESTER**  
 CAMDEN COUNTY NEW JERSEY  
 CHAD F. REMINGTON & VERNICE ENGINEERS, INC.  
 2004

