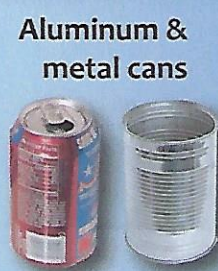


SINGLE STREAM **RECYCLING**



Cartons



Aluminum & metal cans



#1 and #2 Plastic food & beverage containers



Phone books
Newspapers, magazines, brochures & inserts (no bags, do not tie & bundle)

Corrugated cardboard & Paper bags (flattened)



Greeting cards, regular & junk mail



Paperboard boxes (cereal, pasta & tissue)

NO NEED TO REMOVE:

Paper clips, stamps, address labels, staples, metal fasteners, cellophane address windows, rubber bands, spiral bindings, plastic tabs

Please flatten all cardboard boxes. Empty and rinse all containers.

Please follow these guidelines carefully.



Glass bottles & jars

File folders, office paper



Loose metal jar lids & steel bottle caps



Paper towel rolls

Paperback books



NO



- Plastic bags
- Plastic microwave trays
- Frozen food, ice cream or frozen juice containers
- Plastics other than those listed
- Stickers or address label sheet waste
- Styrofoam or paper to-go containers
- Organic material and food waste

Questions? Please contact:
Division of Environmental Affairs
856-858-5241



camden **county**

BOARD OF FREEHOLDERS

Making It Better, Together.

AIM FOR MAXIMIZED RECYCLING